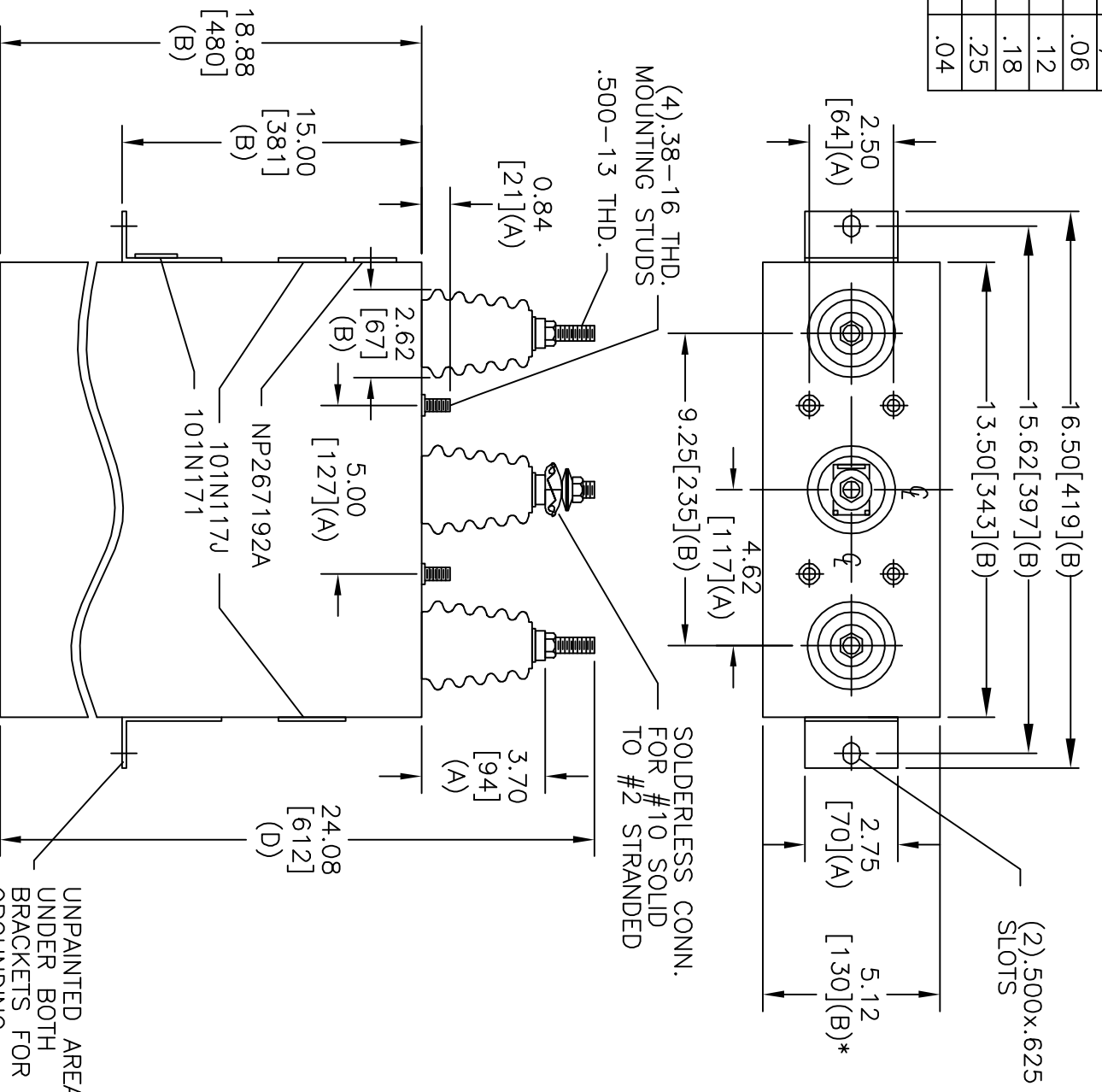


TOL	+/-
A	.06
B	.12
C	.18
D	.25
E	.04



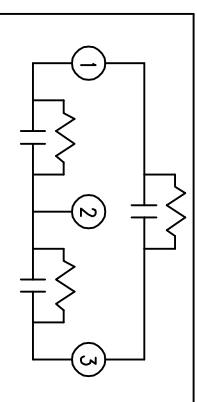
\* UP TO  $\pm .50$  [13] CASE BULGE

MAX. TERMINAL TIGHTENING TORQUE 15 FT-LBS

NP267192A

UNPAINTED AREA UNDER BOTH BRACKETS FOR GROUNDING

SIZE	DWG NO	SHT	REV
A	16L0340WH3	2	
REV	DESCRIPTION	DATE	APPROVED



3300V	3 PH	60 KVBL
225 CAT	KVAR 16L0340WH3	50 Hz SN
101N171	1.8 GAL.	MFG DATE
		READ GEH-2743

INDUSTRIAL SYSTEMS	
FORT EDWARD, N.Y., U.S.A.	
DRAWN	B. ROSS
DATE	JUN 23, 2005
ISSUED	7/29/05

SIZE	A
SCALE	
<h1>OUTLINE</h1> <h2>16L0340WH3</h2>	
SHEET	2
CONT	3