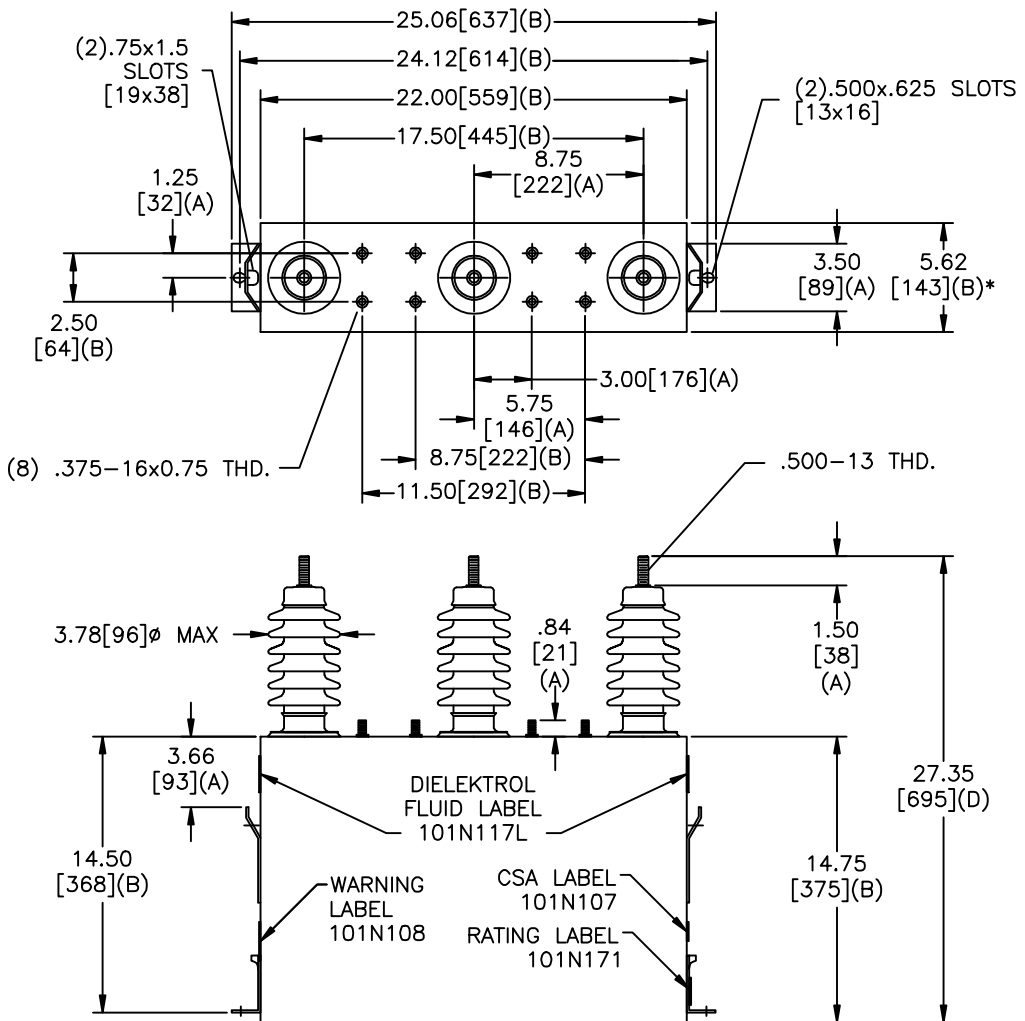
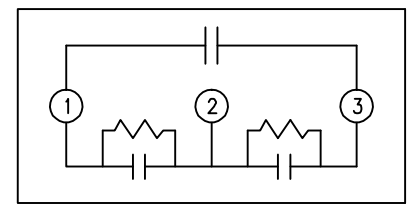


SIZE A	DWG NO 16L0343WH3	SHT 2	REV 1
REV 1	DESCRIPTION 101N117L WAS J	DATE 8/25/2008	APPROVED BTR



TOL	+/-
A	.06
B	.12
C	.18
D	.25

* UP TO +.75 CASE BULGE



SCHEMATIC DIAGRAM - 304

5500 V 3 PH kVBIL
 180 KVAR 60 Hz
 CAT 16L0343WH3 SN
 2.98 GAL.
 MFG DATE
 101N171 READ GEH- 2743

GE ENERGY FORT EDWARD, N.Y., U.S.A.	SIZE A	EST WT 128/58 LB/KG	<h1>OUTLINE</h1> <h2>16L0343WH3</h2>	DISTR. TO	
	DRAWN B.ROSS DATE 6/14/2005				SCALE
	ISSUED DATE 6/29/2005				