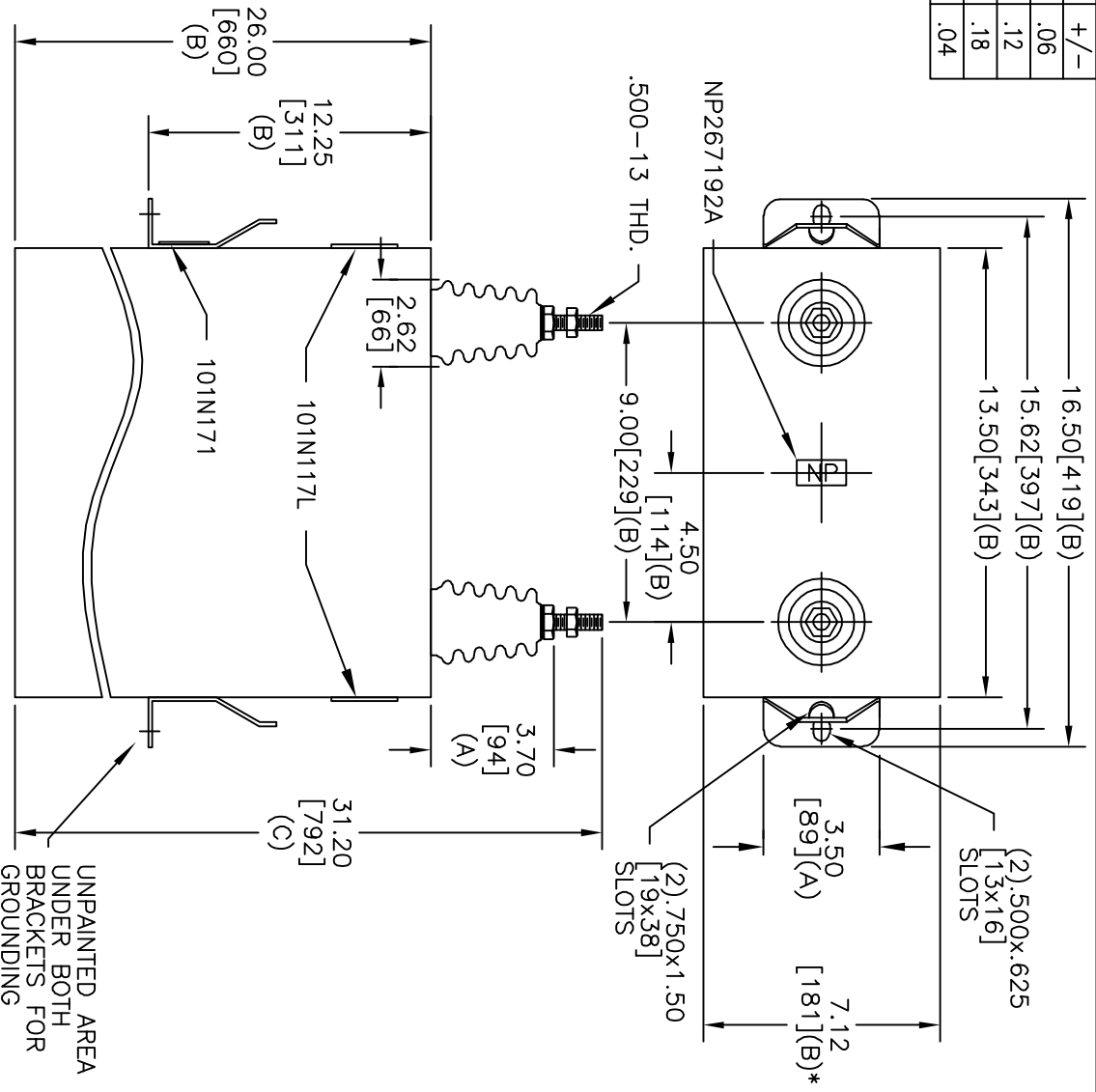


TOL	+/-
A	.06
B	.12
C	.18
D	.04

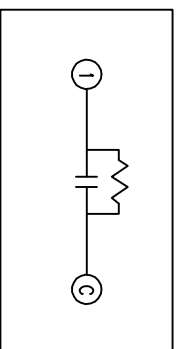


* UP TO +.50 CASE BULGE

MAX. TERMINAL TIGHTENING TORQUE 15 FT-LBS

NP267192A

SIZE	DWG NO	SHT	REV
A	16LO365WH3	2	
REV	DESCRIPTION	DATE	APPROVED



SCHEMATIC DIAGRAM - 102

4160V	1 PH	60 KVBL
450 CAT	KVAR	50 Hz
101N171	16LO365WH3	SN
	3.9 GAL.	
	MFG DATE	
	READ	GEH-2743

UNPAINTED AREA UNDER BOTH BRACKETS FOR GROUNDING



GE ENERGY FORT EDWARD, N.Y., U.S.A.

DRAWN B. ROSS

ISSUED

DATE 6/19/2007

DATE 6/20/2007

SIZE A

SCALE

OUTLINE 16LO365WH3

SHEET 2 CONT 3

DISTR. TO