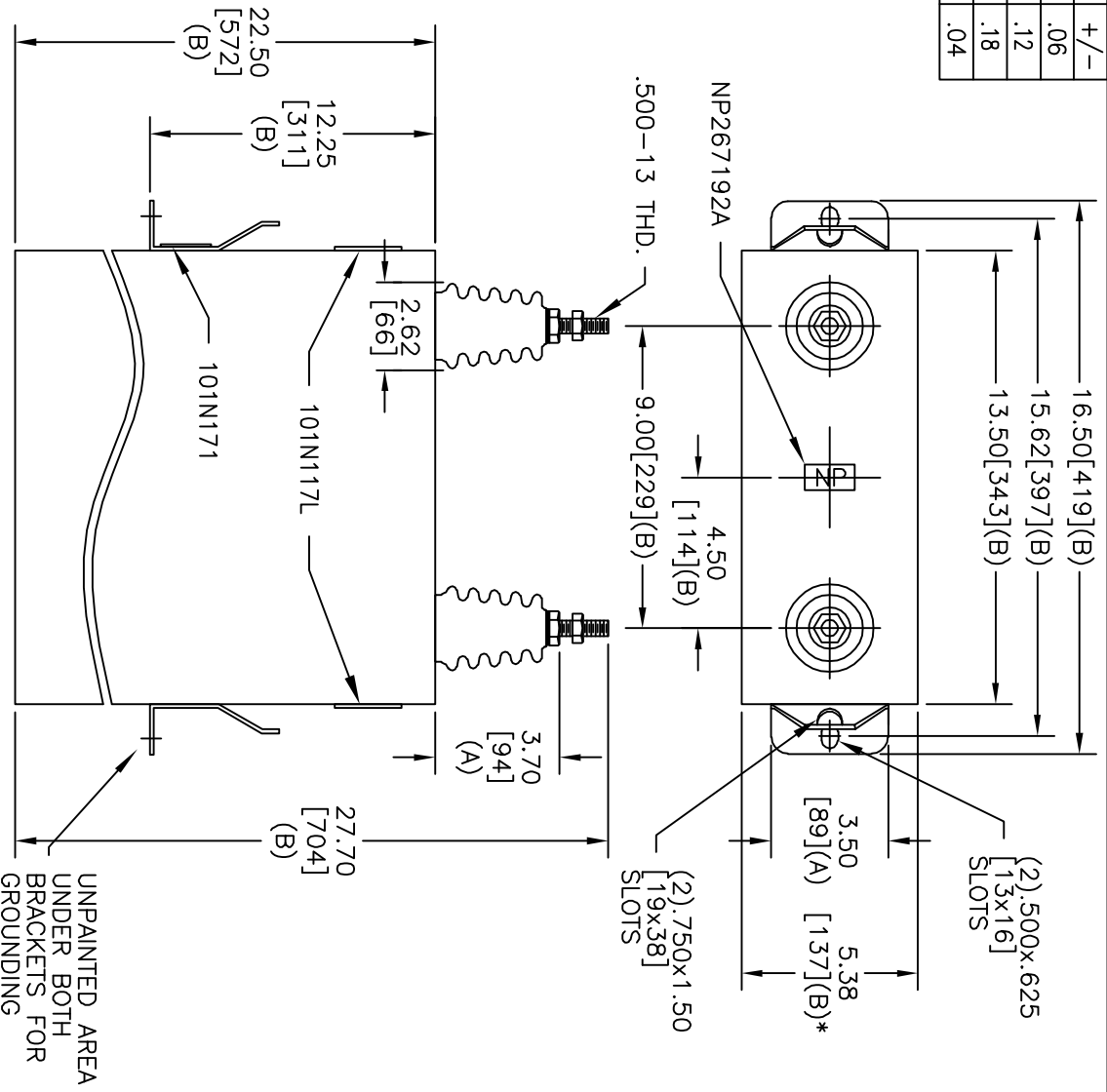


TOL	+/-
A	.06
B	.12
C	.18
D	.04

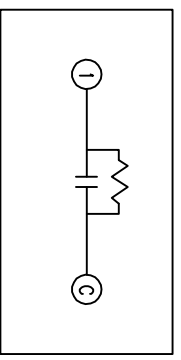


\* UP TO +.50 CASE BULGE

MAX. TERMINAL TIGHTENING TORQUE 15 FT-LBS

NP267192A

SIZE	DWG NO	SHT	REV
A	16L0366WH3	2	
REV	DESCRIPTION	DATE	APPROVED



SCHEMATIC DIAGRAM - 102

4160V	1 PH	60 KVBL
275 CAT	KVAR	50 Hz
16L0366WH3	SN	
101N171	3.1 GAL.	
	MFG DATE	
	READ	GEH-2743

UNPAINTED AREA UNDER BOTH BRACKETS FOR GROUNDING

GE ENERGY FORT EDWARD, N.Y., U.S.A.

ISSUED	DATE	DATE	DATE
	6/8/2007	6/7/2007	6/8/2007

B. ROSS

NP267192A

DISTR. TO

OUTLINE 16L0366WH3

SHEET 2 CONT 3