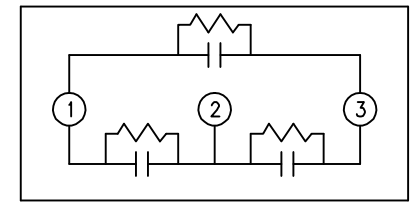
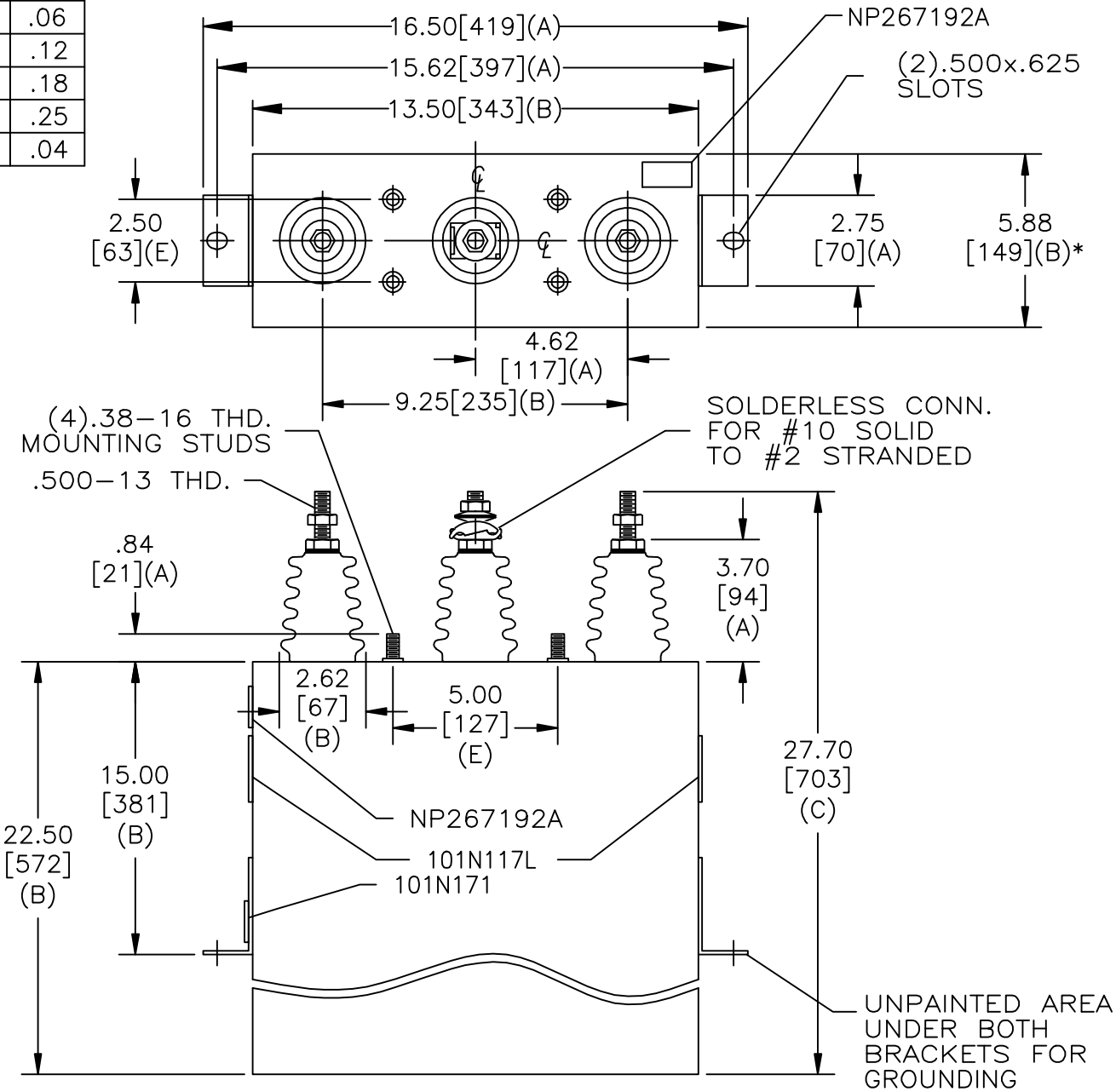


SIZE A	DWG NO 16L0369WH3	SHT 2	REV
REV	DESCRIPTION	DATE	APPROVED

TOL	+/-
A	.06
B	.12
C	.18
D	.25
E	.04



SCHEMATIC DIAGRAM - 302

3300V	3PH	60 kVBIL
300 KVAR	50 Hz	
CAT 16L0369WH3	SN	
	2.2 GAL.	
	MFG DATE	
101N171	READ	GEH-2743

\* UP TO +.50 [13] CASE BULGE

MAX. TERMINAL TIGHTENING TORQUE  
15 FT-LBS  
NP267192A

<b>GE ENERGY</b> FORT EDWARD, N.Y., U.S.A.		SIZE <b>A</b>
DRAWN B. Ross	DATE 3/26/2008	SCALE
ISSUED	DATE 5/28/2008	

**OUTLINE**  
**16L0369WH3**

SHEET 2 CONT ON 3

DISTR. TO