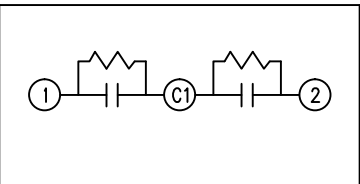


SIZE A	DWG NO 16L0371WH3	SHT 2	REV 1
REV 1	DESCRIPTION Chg Bush Mtg Ht	DATE 3/14/2013	APPROVED JBC

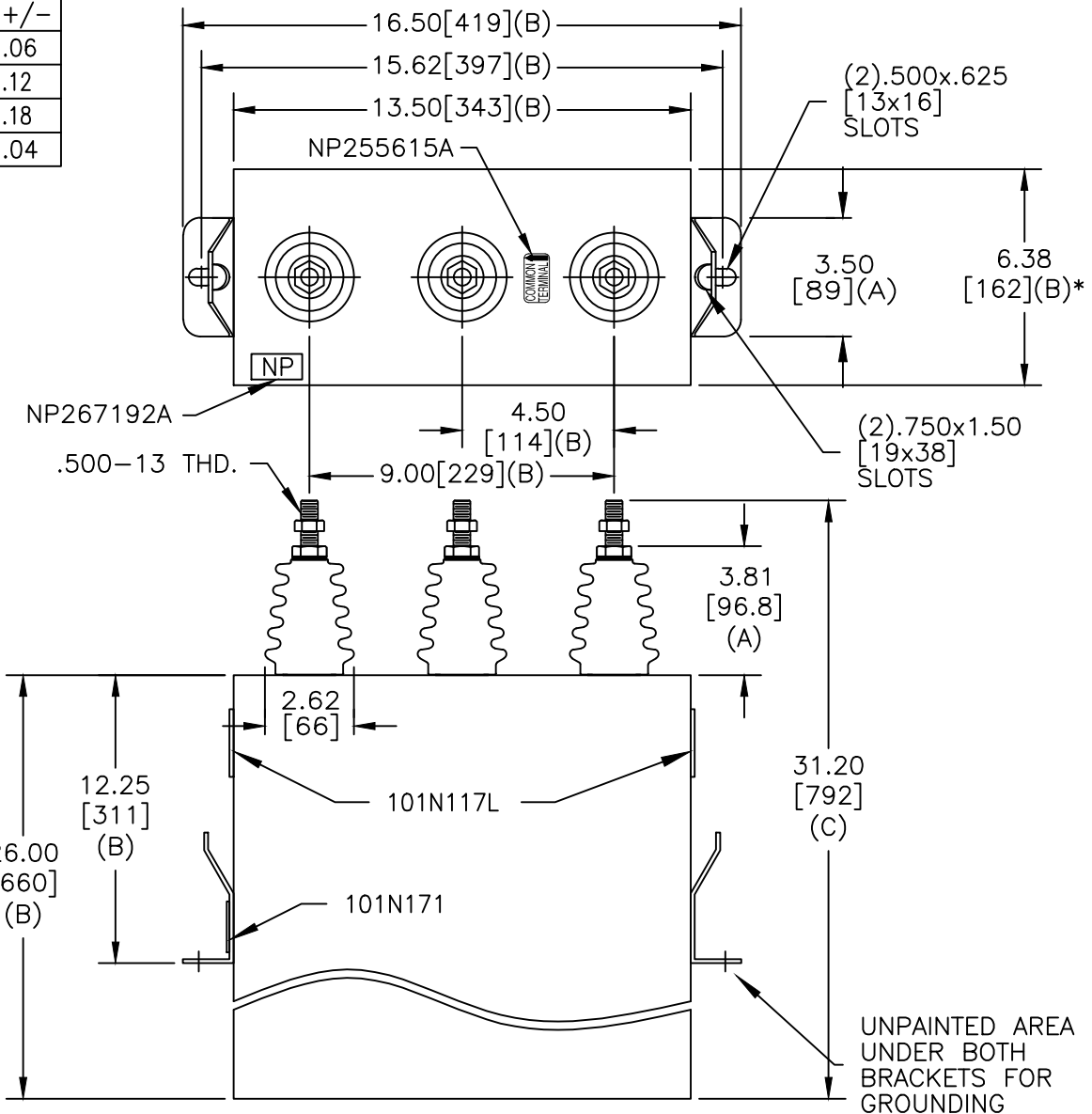
TOL	+/-
A	.06
B	.12
C	.18
D	.04

TERM	uF	kVAR
1	109.6	200
2	109.6	200



SCHEMATIC DIAGRAM - 227

2 X 109.6 UF  
 2200V 1 PH kVBIL  
 400 KVAR 60 Hz  
 CAT 16L0371WH3 SN  
 3.9 GAL.  
 MFG DATE  
 101N171 READ GEH- 2743



\* UP TO +.50 CASE BULGE

MAX. TERMINAL TIGHTENING TORQUE 15 FT-LBS

NP267192A

<b>GE ENERGY</b> FORT EDWARD, N.Y., U.S.A.		SIZE A
DRAWN B.ROSS	DATE 3/30/2008	SCALE
ISSUED	DATE	

**OUTLINE**  
**16L0371WH3**

SHEET 2 CONT ON 3

DISTR. TO