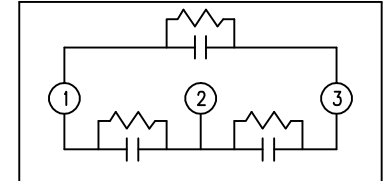
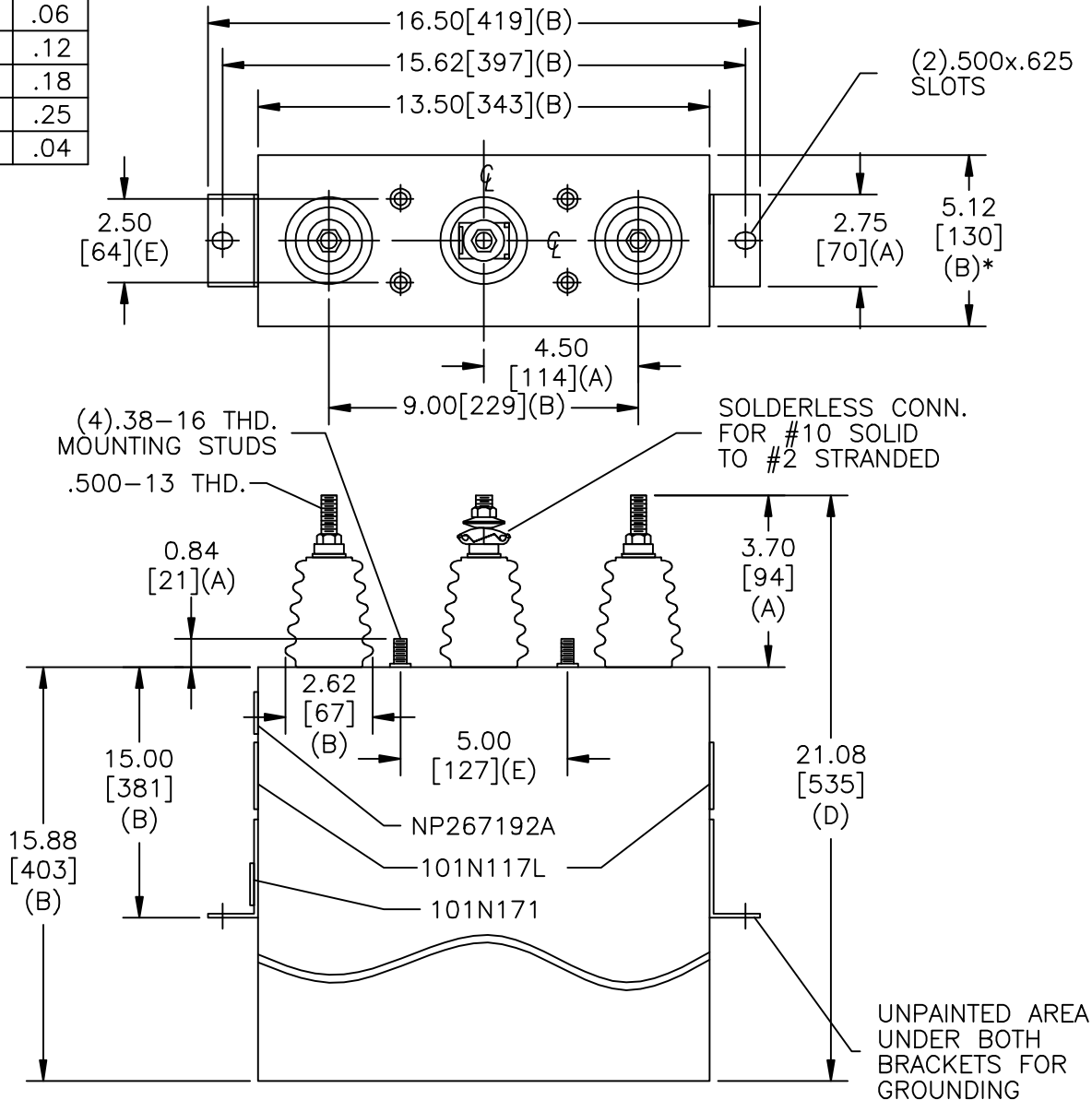


SIZE A	DWG NO 16L0375WH3	SHT 2	REV
REV	DESCRIPTION	DATE	APPROVED
			BTR

TOL	+/-
A	.06
B	.12
C	.18
D	.25
E	.04



SCHEMATIC DIAGRAM - 302

3300V	3PH	60 kVBIL
200 KVAR	60 Hz	
CAT 16L0375WH3	SN	
	1.72 GAL.	
101N171	MFG DATE	
	READ GEH- 2743	

* UP TO +.50 [13] CASE BULGE

MAX. TERMINAL TIGHTENING TORQUE 15 FT-LBS
NP267192A

GE ENERGY FORT EDWARD, N.Y., U.S.A.	SIZE A	<h1>OUTLINE</h1> <h2>16L0375WH3</h2>
	SCALE	
DRAWN B. Ross	DATE 11/16/2009	SHEET 2 CONT ON 3
ISSUED	DATE 11/16/2009	

DISTR. TO