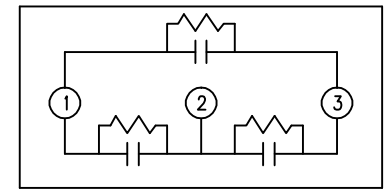
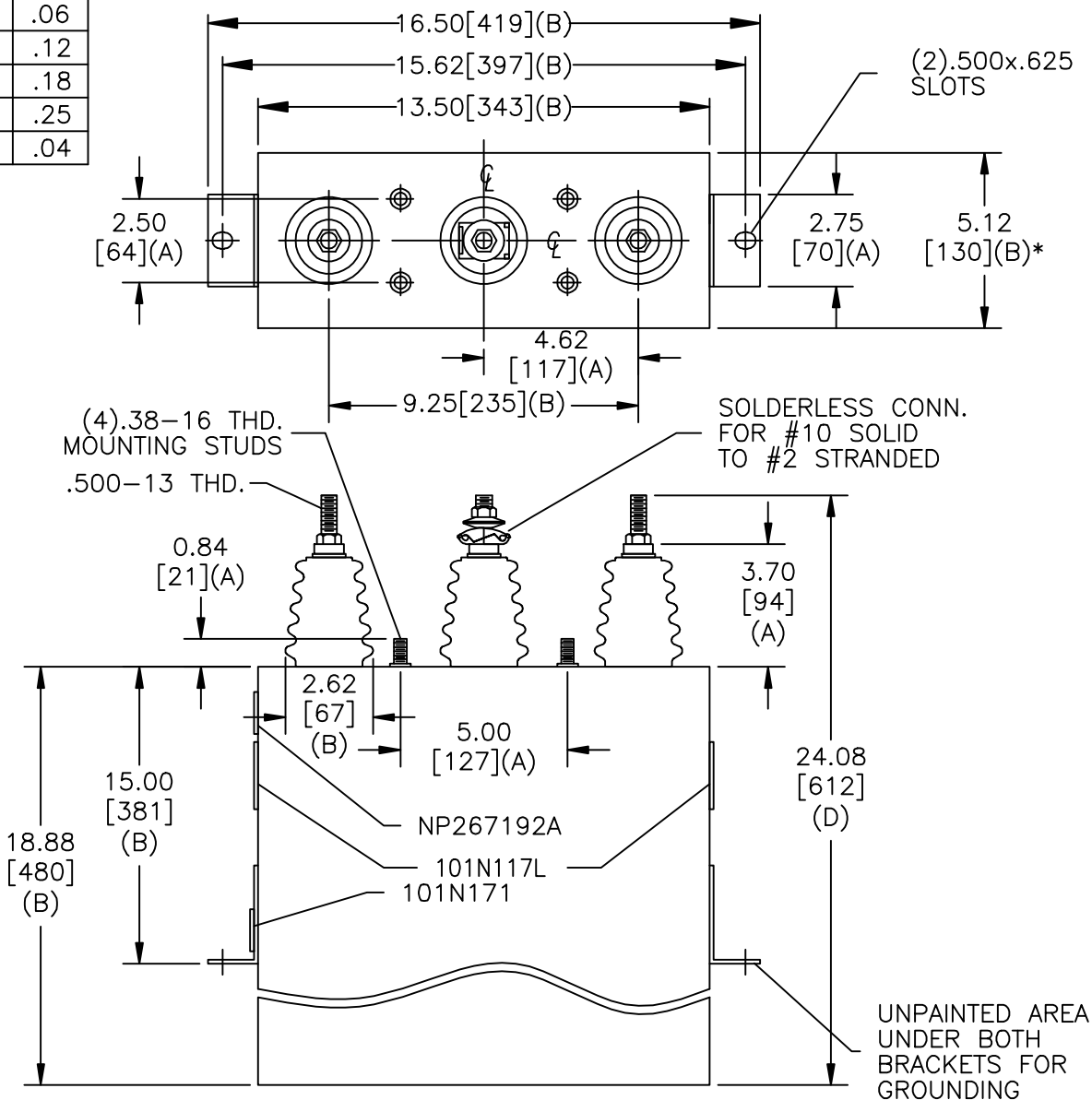


SIZE A	DWG NO 16L0376WH3	SHT 2	REV
REV	DESCRIPTION	DATE	APPROVED

TOL	+/-
A	.06
B	.12
C	.18
D	.25
E	.04



SCHEMATIC DIAGRAM - 302

3300V      3 PH      60 kVBIL  
 225 KVAR      60 Hz  
 CAT 16L0376WH3      SN  
 1.8 GAL.  
 MFG DATE  
 101N171      READ GEH- 2743

\* UP TO +.50 [13] CASE BULGE

MAX. TERMINAL TIGHTENING TORQUE 15 FT-LBS  
 NP267192A

<b>GE ENERGY</b> FORT EDWARD, N.Y., U.S.A.		SIZE <b>A</b>	<h1>OUTLINE</h1> <h2>16L0376WH3</h2>	
DRAWN    B. ROSS	DATE    11/16/2009	SCALE		
ISSUED	DATE    11/16/2009	SHEET    2      CONT ON    3		

DISTR. TO