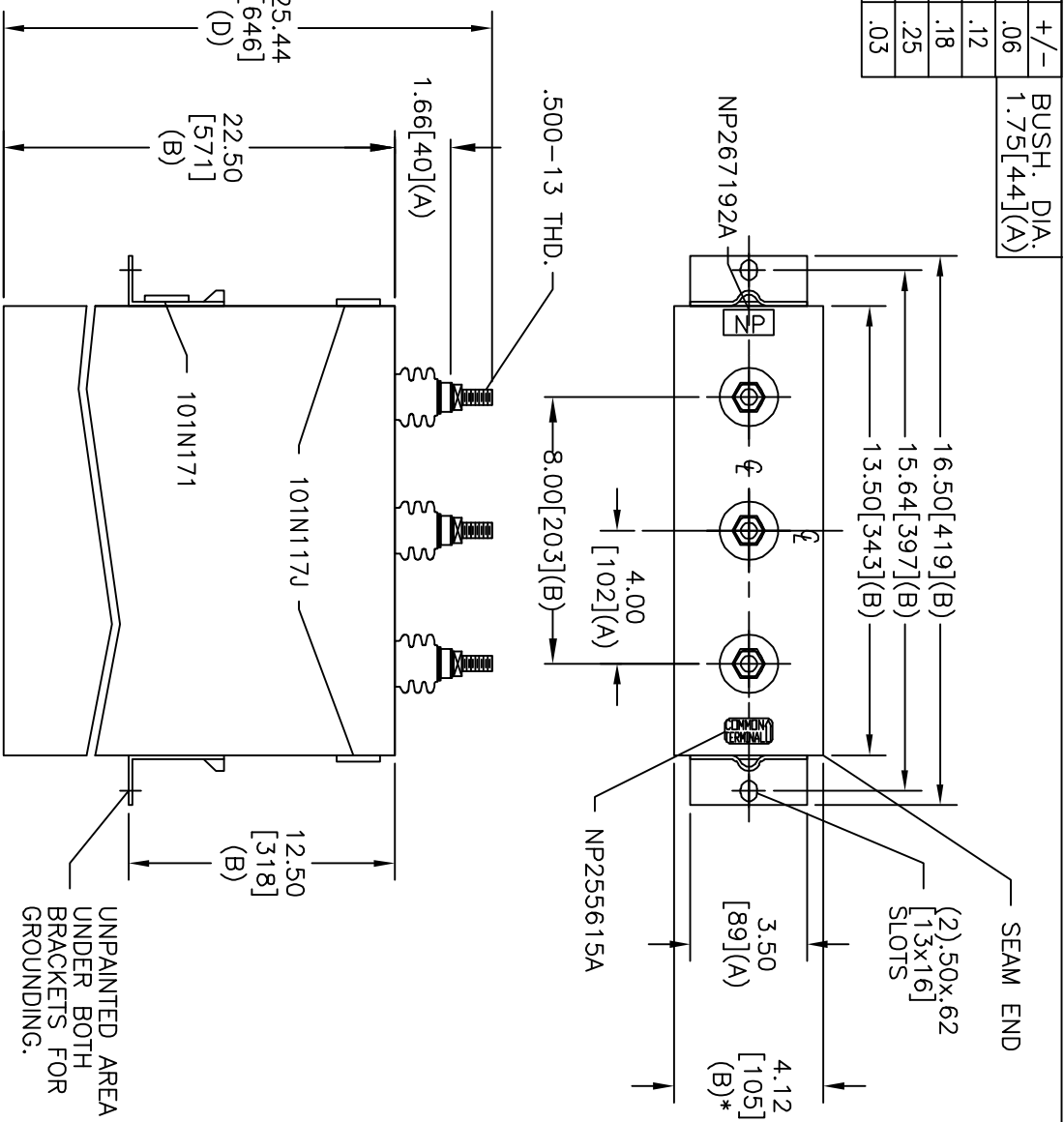
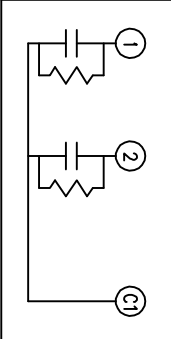


TOL	+/-	BUSH. DIA.
A	.06	1.75[.44](A)
B	.12	
C	.18	
D	.25	
E	.03	



SIZE	DWG NO	SHT	REV
A	16L0378WH3	2	4
REV	DESCRIPTION	DATE	APPROVED
4	UPDATE	8/22/06	BTR

TERM	UF	KVAR
1	138.2	75
2	138.2	75



75 / 75 KVAR / TAP	
1200 V	1 PH
150 KVAR	60 Hz
CAT 16L0378WH3	SN
1.9 GAL.	
MFG DATE	
101N171	READ GEH- 2743

* UP TO +.50[13]
CASE BULGE

MAX. TERMINAL
TIGHTENING TORQUE
15 FT-LBS

INDUSTRIAL SYSTEMS
FORT EDWARD, N.Y., U.S.A.

DRAWN E. McGinn
ISSUED

DATE 1-22-97
DATE 1-24-97

SCALE A

OUTLINE
16L0378WH3

SHEET 2 CONT 3

DISTR. TO