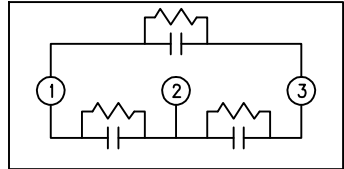
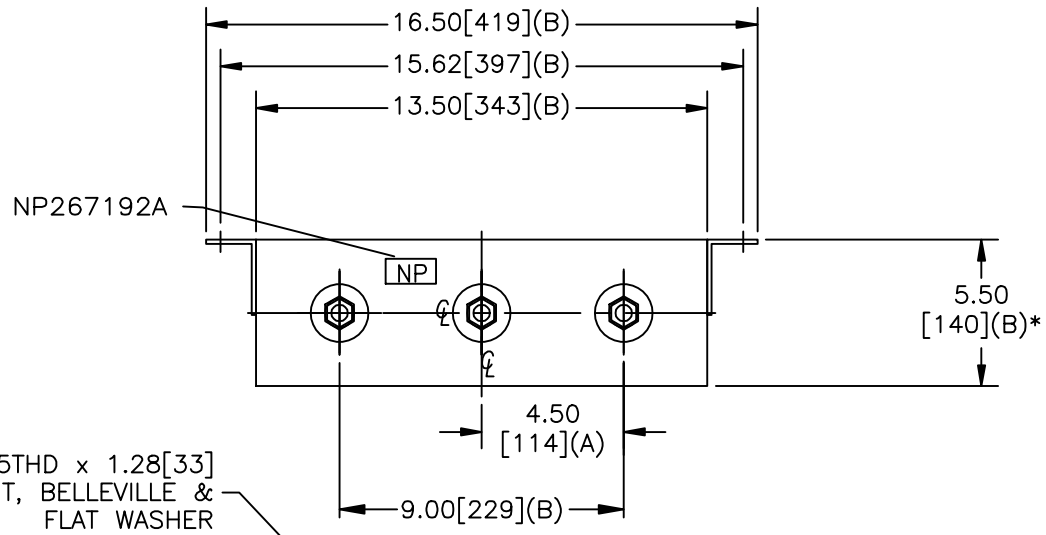


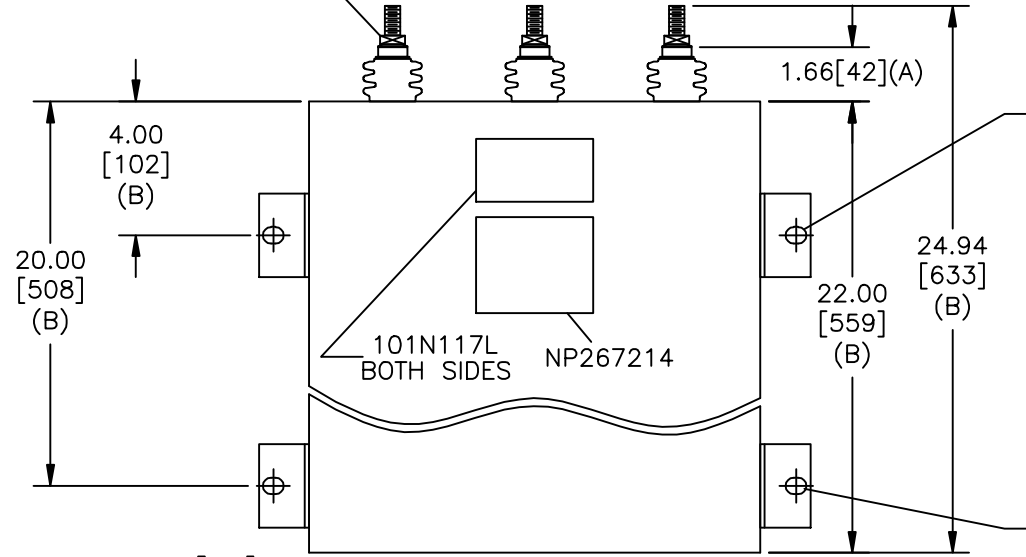
SIZE A	DWG NO 16L0380WH3	SHT 2	REV 1
REV 1	DESCRIPTION CHG BKT LOC	DATE 3/17/10	APPROVED BTR

TOL	+/-
A	.06
B	.12
C	.18
D	.50
E	.04



SCHEMATIC DIAGRAM - 302

M12x1.5THD x 1.28[33]
NUT, BELLEVILLE &
FLAT WASHER



WITH INTERNAL DISCH RESISTORS
CAT. 16L0380WH3 SN
342A4933FCP3
234KVAR 1630V 60HZ 3PH
195KVAR 1630V 50HZ 3PH
2.0 GAL. COMBUSTIBLE LIQUID
CAUTION! BEFORE INSTALLING OR
OPERATING READ GEH-2743
NP267214

* UP TO +.50[13]
CASE BULGE

MAX. TERMINAL
TIGHTENING TORQUE
15 FT-LBS
NP267192A

GE ENERGY FORT EDWARD, N.Y., U.S.A.		SIZE A
DRAWN B. ROSS	DATE 1/4/2010	SCALE
ISSUED	DATE 2/26/10	

OUTLINE 16L0380WH3	
SHEET 2	CONT ON 3

DISTR. TO