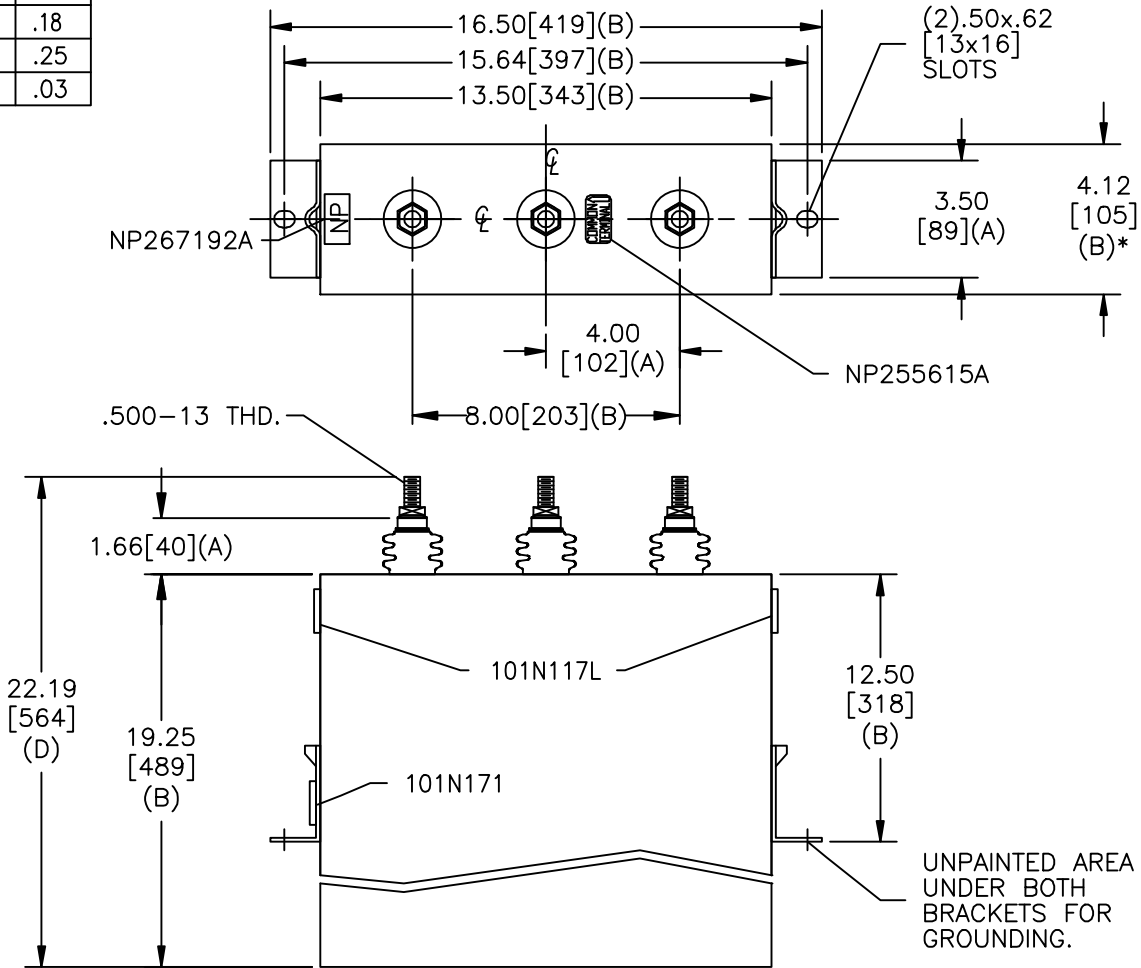
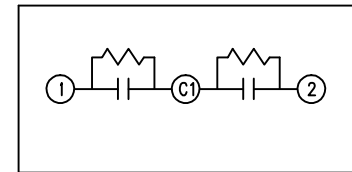


TOL	+/-	BUSH. DIA.
A	.06	1.75[44](A)
B	.12	
C	.18	
D	.25	
E	.03	

SIZE A	DWG NO 16L0385WH3	SHT 2	REV 2
REV 2	DESCRIPTION UPDATE FORMAT	DATE 10/07/2010	APPROVED jbc



TERM	uF	kVAR
1	127.3	75
2	127.3	75



SCHEMATIC DIAGRAM - 227

2 X 75 KVAR/TAP		
1200 V	1 PH	kVBIL
150 KVAR	60 Hz	
CAT 16L0385WH3	SN	
	1.6 GAL.	
	MFG DATE	
101N171	READ GEH- 2743	

* UP TO +.50[13]
CASE BULGE

MAX. TERMINAL
TIGHTENING TORQUE
15 FT-LBS
NP267192A

GE ENERGY FORT EDWARD, N.Y., U.S.A.		SIZE A
DRAWN E. McGinn	DATE 05/12/1997	SCALE
ISSUED	DATE 05/14/1997	

OUTLINE
16L0385WH3

SHEET 2 CONT ON 3

DISTR. TO