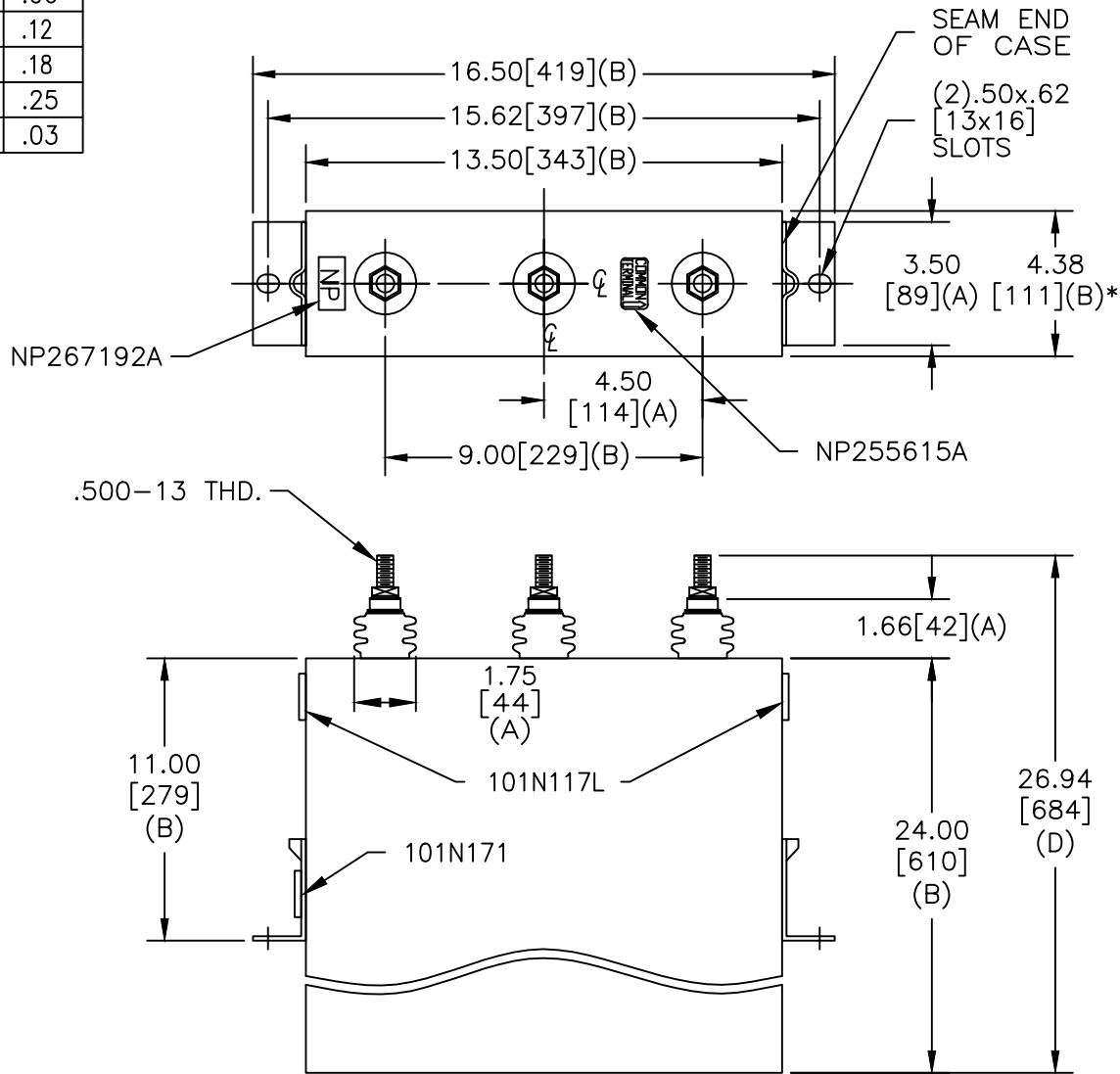
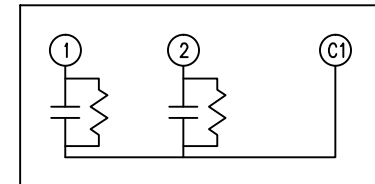


TOL	+/-
A	.06
B	.12
C	.18
D	.25
E	.03

SIZE A	DWG NO 16L0391WH3	SHT 2	REV 3
REV 3	DESCRIPTION CHG FLUID LABEL	DATE 11/06/2013	APPROVED JBC



TERM	uF	kVAR
1	235.8	50
2	235.8	50



SCHEMATIC DIAGRAM - 212

2X50 KVAR SECTIONS  
 750V 1 PH KVBIL  
 100 KVAR 60 Hz  
 CAT 16L0391Wh3 SN  
 2.1 GAL.  
 MFG DATE  
 101N171 READ GEH- 2743

\* UP TO +.50 [13] CASE BULGE

MAX. TERMINAL TIGHTENING TORQUE 15 FT-LBS

NP267192A

<b>GE ENERGY</b> FORT EDWARD, N.Y., U.S.A.		SIZE A
DRAWN	E. McGinn	DATE 1/7/1997
ISSUED		DATE 1/8/1997

SCALE

**OUTLINE**  
**16L0391WH3**

SHEET 2 CONT ON 3

DISTR. TO