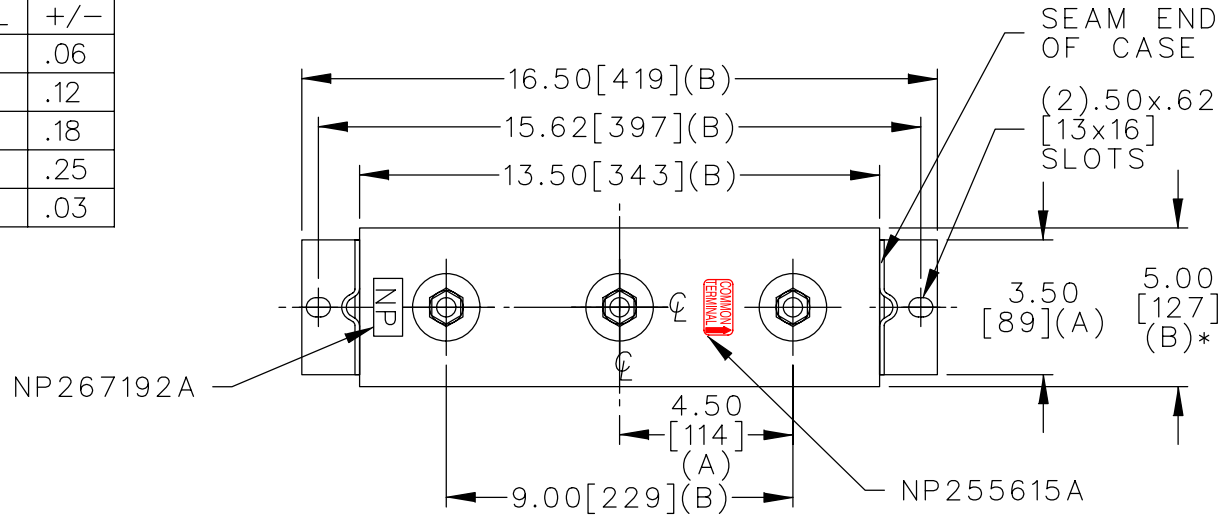
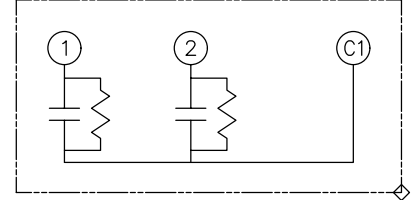
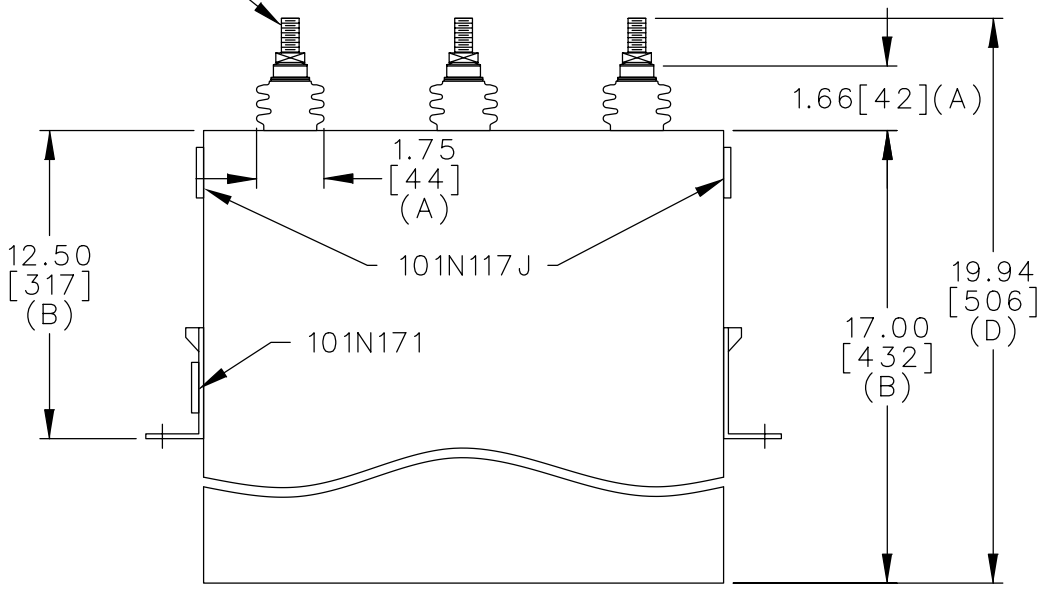


TOL	+/-
A	.06
B	.12
C	.18
D	.25
E	.03



TERM	uF	kVAR
1	180.4	68
2	180.4	68

.500-13 THD.



2x180.4 UF/TAP
1000 V 1 PH KVBIL
136 KVAR 60 HZ
CAT. 16L0392WH3
1.7 GAL.
MFG DATE
101N171 READ GEH-2743

* UP TO +.50[13] CASE BULGE

MAX. TERMINAL TIGHTENING TORQUE 15 FT-LBS

NP267192A

<p>CAPACITOR & POWER PROTECTION FORT EDWARD, N.Y., U.S.A.</p>	SIZE A	FSCM NO	<p>OUTLINE 16L0392WH3</p>
	<p>DRAWN E.McGINN JULY 12, 2001</p>	SCALE	
<p>ISSUED</p>			DISTR TO