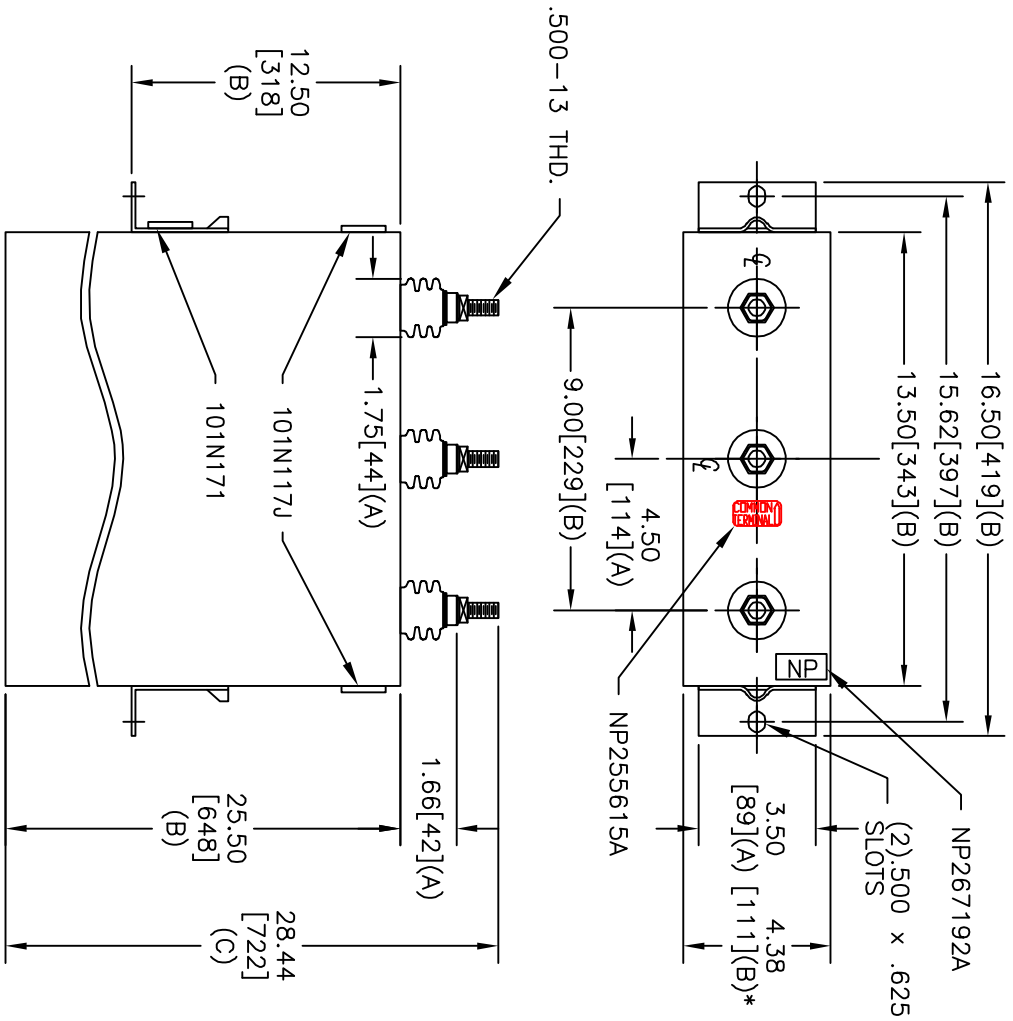


TOL	+/-
A	.06
B	.12
C	.18
D	.25
E	.04

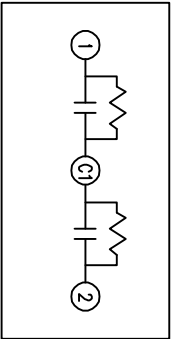


\* UP TO +.50 CASE BULGE

MAX. TERMINAL TIGHTENING TORQUE 15 FT-LBS NP267192A

SIZE	DWG NO	SHT	REV
A	16L0393WH3	2	2
REV	DESCRIPTION	DATE	APPROVED
2	RETRACE	10/20/2006	BTR

TERM	UF	KVAR
1	169.8	100
2	169.8	100



SCHEMATIC DIAGRAM - 227

100/100 KVAR SECTIONS		KV/BIL
1250V	1 PH	
200 KVAR	60 HZ	
CAT 16L0393WH3	SN	
2.1 GAL.	MFG DATE	
101N1171	READ DATE	
	GEH-2743	

GE ENERGY  
FORT EDWARD, N.Y., U.S.A.

DRAWN TMO  
ISSUED

DATE 4/26/1997  
DATE 4/2/1997

SIZE A  
SCALE

OUTLINE  
16L0393WH3

SHEET 2 CONT 3

DISTR. TO