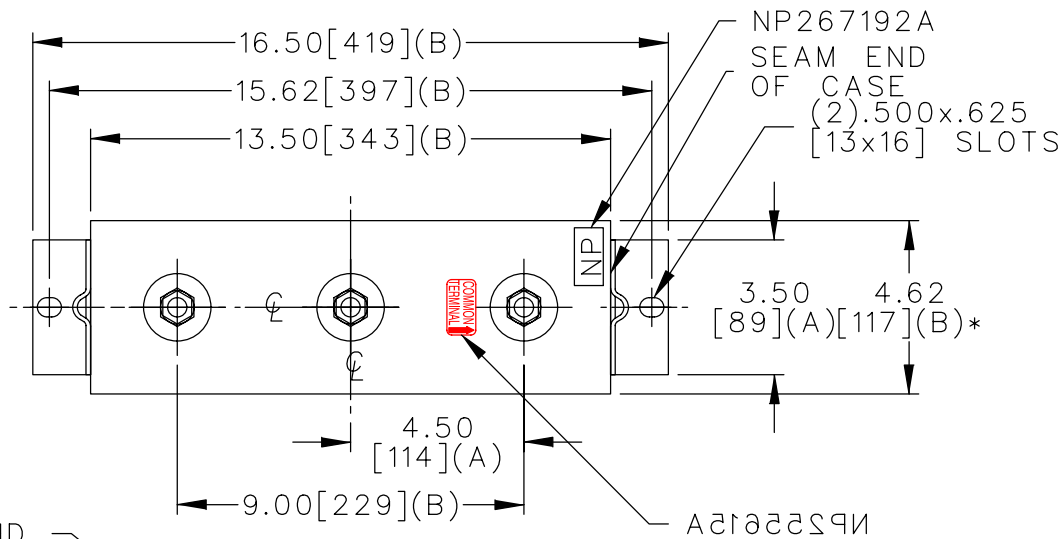


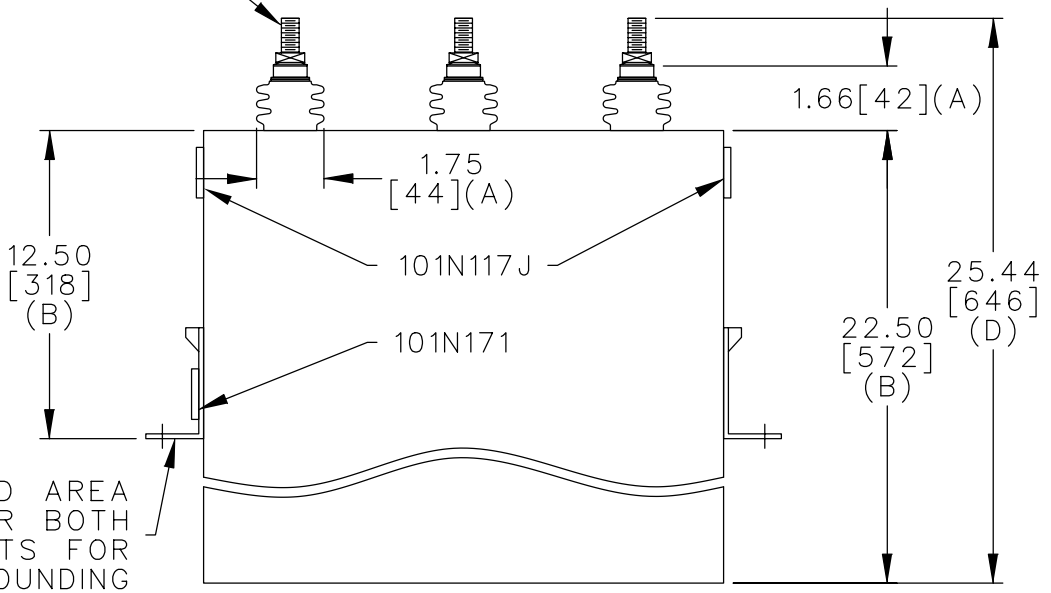
TOL	+/-
A	.06
B	.12
C	.18
D	.25
E	.03

SIZE	DWG NO.	SH	REV
A	16L0395WH3	2	
REV	McGINN UPDATE CAT NO		
1			



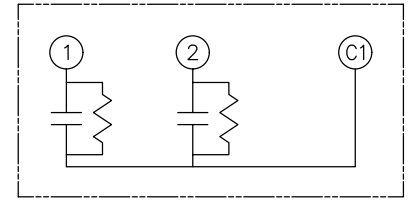
.500-13 THD.

NP267192A



UNPAINTED AREA UNDER BOTH BRACKETS FOR GROUNDING

TERM	uF	kVAR
1	276.3	150
2	92.1	50



SCHEMATIC DIAGRAM - 212

1200 V 1 PH KVBIL  
 200 KVAR 60 HZ  
 CAT. 16L0395WH3  
 2.0 GAL.  
 MFG DATE  
 101N171 READ GEH-2743

\* UP TO +.50 [13] CASE BULGE

MAX. TERMINAL TIGHTENING TORQUE 15 FT-LBS

NP267192A

	CAPACITOR & POWER PROTECTION FORT EDWARD, N.Y., U.S.A.		SIZE <b>A</b>	FSCM NO	<b>OUTLINE</b> <b>16L0395WH3</b>	DISTR TO
	DRAWN E.McGINN	JULY 18, 1996	SCALE	SHEET 2 CONT 3		
ISSUED	7-24-96					