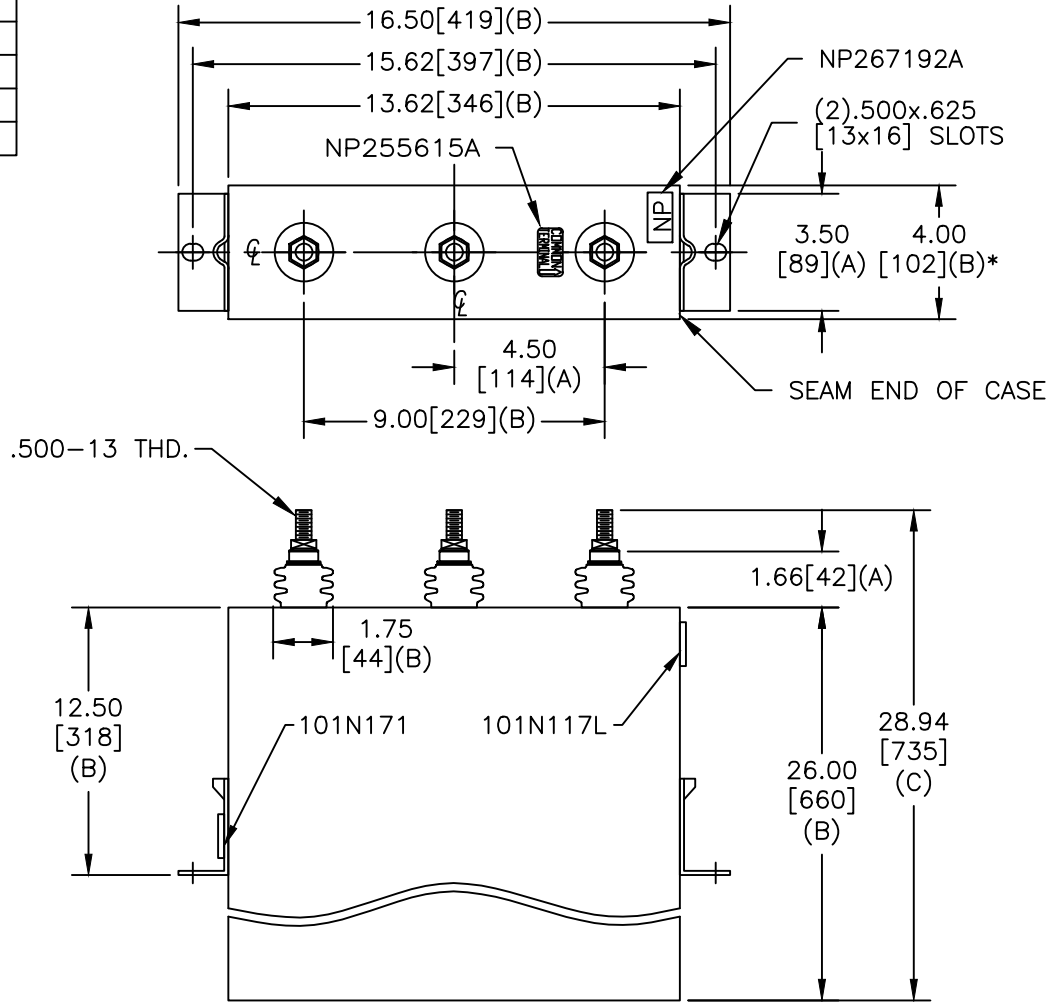
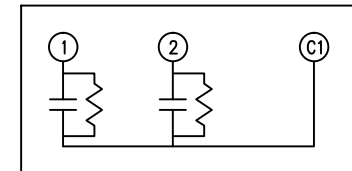


TOL	+/-
A	.06
B	.12
C	.18
D	.25
E	.03

SIZE A	DWG NO 16L0397WH3	SHT 2	REV 2
REV 2	DESCRIPTION UPDATE NPS	DATE 4/29/2013	APPROVED JBC



TERM	uF	kVAR
1	145.5	100
2	145.5	100



SCHEMATIC DIAGRAM - 212

2 X 100 KVAR
 1350V 1 PH kVBIL
 200 KVAR 60 Hz
 CAT 16L0397WH3 SN
 1.8 GAL.
 MFG DATE
 101N171 READ GEH-2743

* UP TO +.50
CASE BULGE

MAX. TERMINAL
TIGHTENING TORQUE
15 FT-LBS

NP267192A

GE ENERGY FORT EDWARD, N.Y., U.S.A.		SIZE A
DRAWN E. McGinn	DATE 1/23/1997	SCALE
ISSUED	DATE 1/30/1997	

OUTLINE
16L0397WH3

SHEET 2 CONT ON 3

DISTR. TO