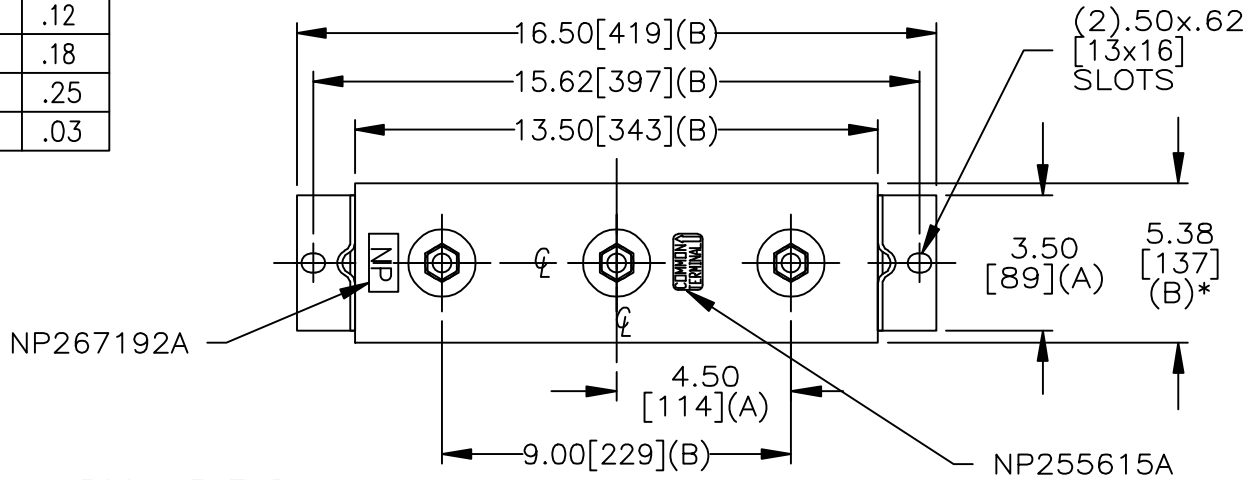
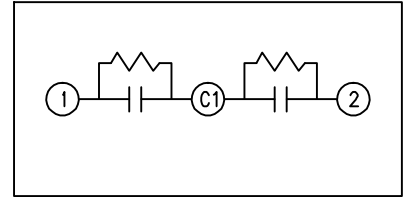


SIZE A	DWG NO 16L0400WH3	SHT 2	REV 2
REV 2	DESCRIPTION NP 101N117L WAS J	DATE 7/1/09	APPROVED BTR

TOL	+/-
A	.06
B	.12
C	.18
D	.25
E	.03

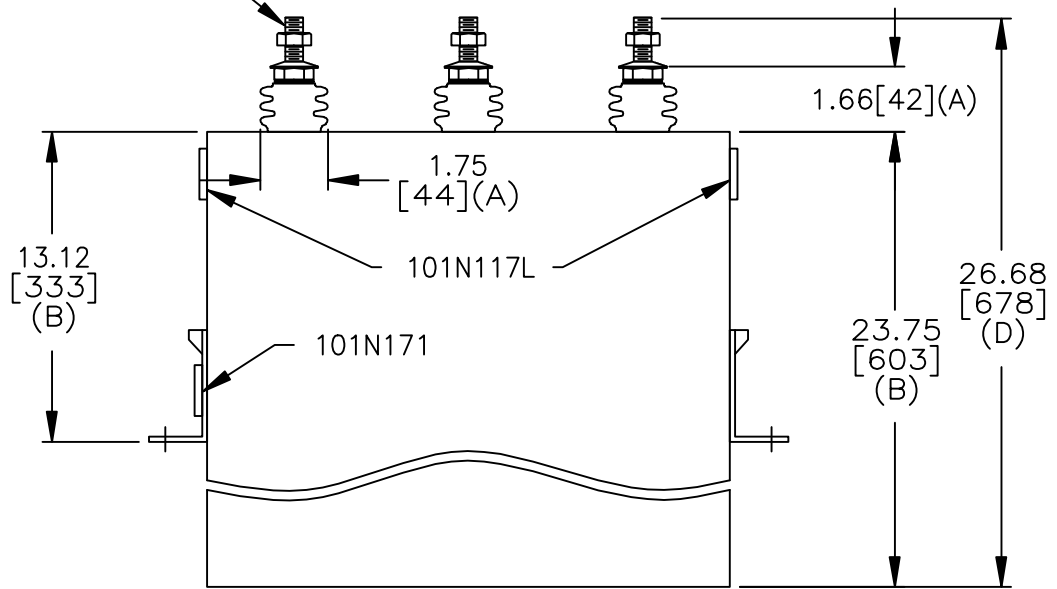


TERM	uF	kVAR
1	368.4	50
2	368.4	50



SCHEMATIC DIAGRAM - 227

.500-13 THD.



2 X 50KVAR/TAP  
 600V 1 PH kVBIL  
 100 KVAR 60 Hz  
 CAT 16L0400WH3 SN  
 2.4 GAL.  
 MFG DATE  
 101N171 READ GEH- 2743

\* UP TO +.50 [13] CASE BULGE

MAX. TERMINAL TIGHTENING TORQUE 15 FT-LBS

NP267192A

<b>GE ENERGY</b> FORT EDWARD, N.Y., U.S.A.	SIZE A	<h1>OUTLINE</h1> <h2>16L0400WH3</h2>
	DRAWN E. McGinn DATE 2/5/1997 ISSUED DATE 2/5/1997	
SHEET 2		CONT ON 3

DISTR. TO