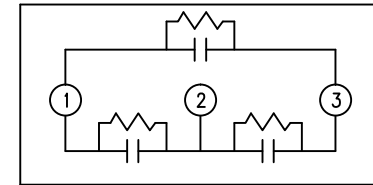
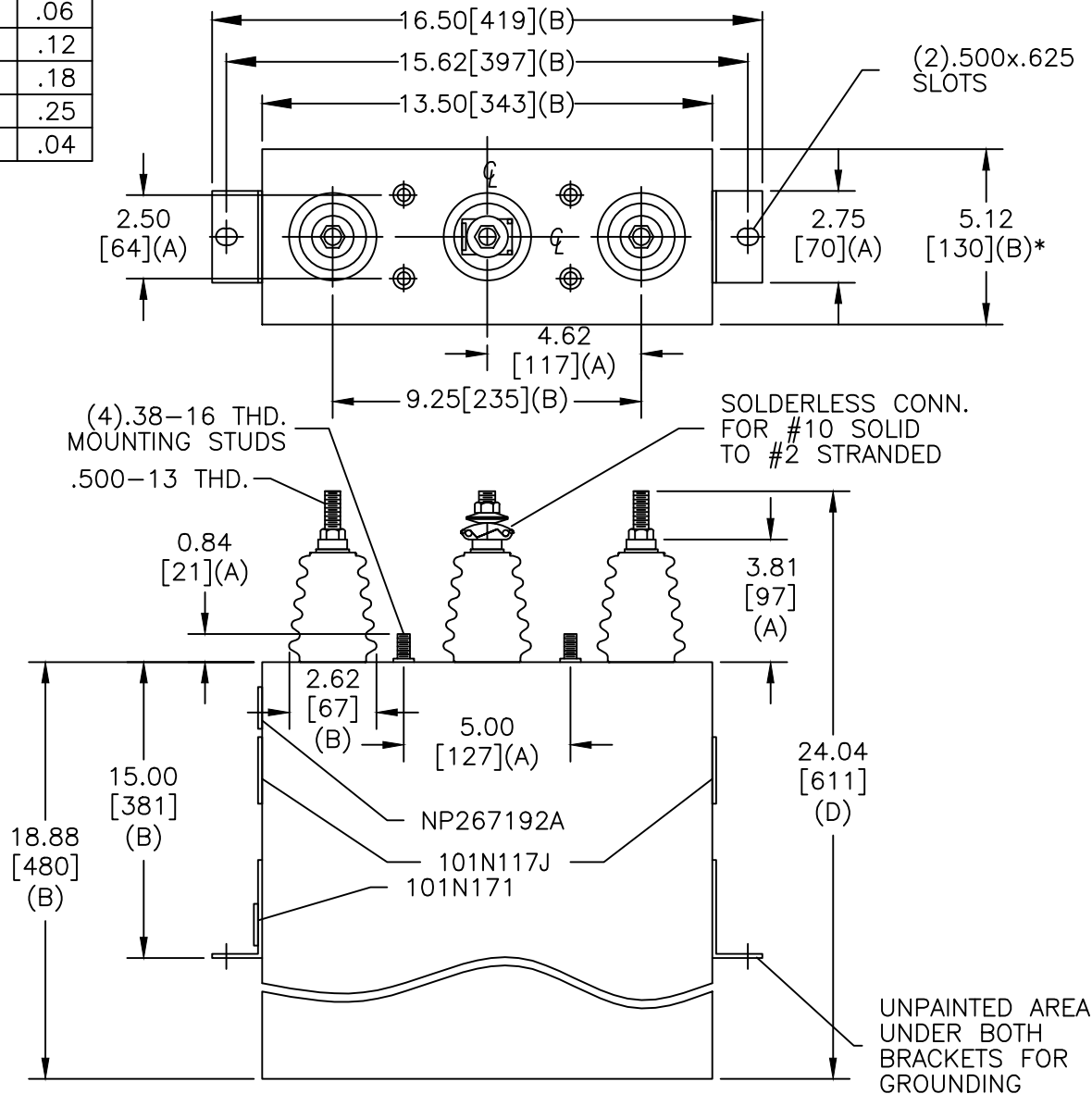


TOL	+/-
A	.06
B	.12
C	.18
D	.25
E	.04

SIZE A	DWG NO 16L0405WH3	SHT 2	REV
REV	DESCRIPTION	DATE	APPROVED



SCHEMATIC DIAGRAM - 302

3300V	3 PH	60 kVBIL
175 KVAR	50 Hz	
CAT 16L0405WH3	SN	
	1.8 GAL.	
	MFG DATE	
101N171	READ GEH- 2743	

* UP TO +.50 [13] CASE BULGE

MAX. TERMINAL TIGHTENING TORQUE 15 FT-LBS

NP267192A

GE ENERGY FORT EDWARD, N.Y., U.S.A.		SIZE A
DRAWN JBC	DATE 08/08/2011	SCALE
ISSUED	DATE 08/08/2011	

OUTLINE
16L0405WH3

SHEET 2 CONT ON 3

DISTR. TO