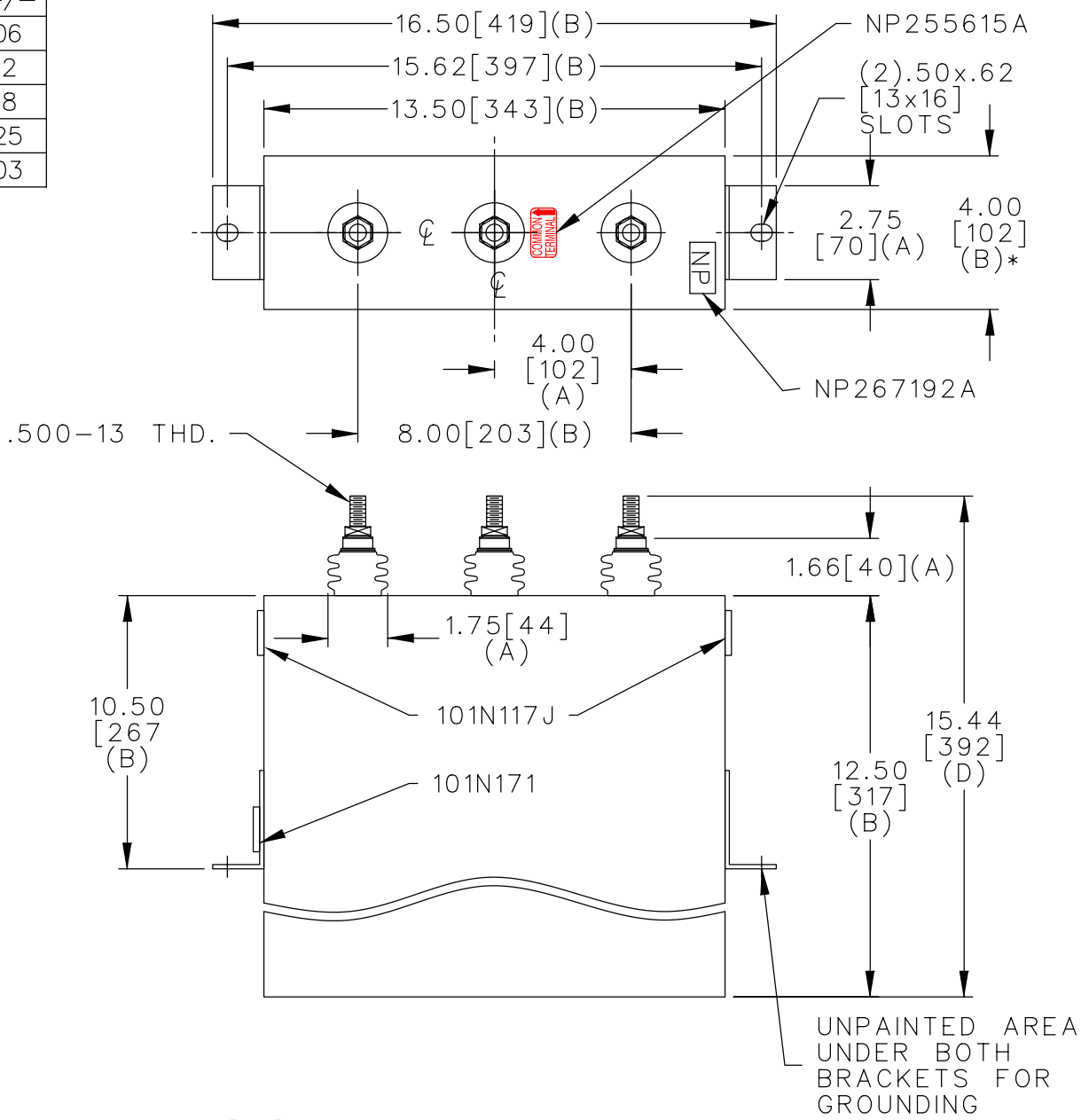
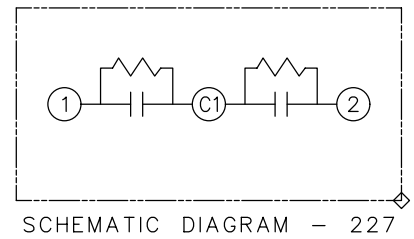


TOL	+/-
A	.06
B	.12
C	.18
D	.25
E	.03

SIZE <b>A</b>	DWG NO. 16L0407WH3	SH 2	REV
REV 1	6-4-97		
2	McGINN UPDATE CAT NO		

TERM	uF	KVAR
1	200.6	25
2	200.6	25



25/25 KVAR/TAP  
 575 V 1 PH KVBIL  
 50 KVAR 60 HZ  
 CAT. 16L0407WH3  
 1.02 GAL.  
 MFG DATE  
 101N171 READ GEH-2743

\* UP TO +.50 [13]  
 CASE BULGE

MAX. TERMINAL  
 TIGHTENING TORQUE  
 15 FT-LBS

NP267192A

	CAPACITOR & POWER PROTECTION FORT EDWARD, N.Y., U.S.A.		SIZE <b>A</b>	FSCM NO	<b>OUTLINE</b> <b>16L0407WH3</b>	DISTR TO
	DRAWN E.McGINN	MAY 20, 1997	SCALE	SHEET 2		
ISSUED	5-21-97					