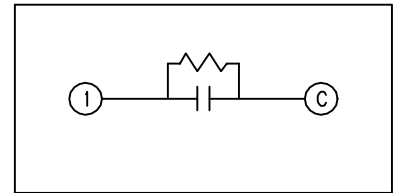
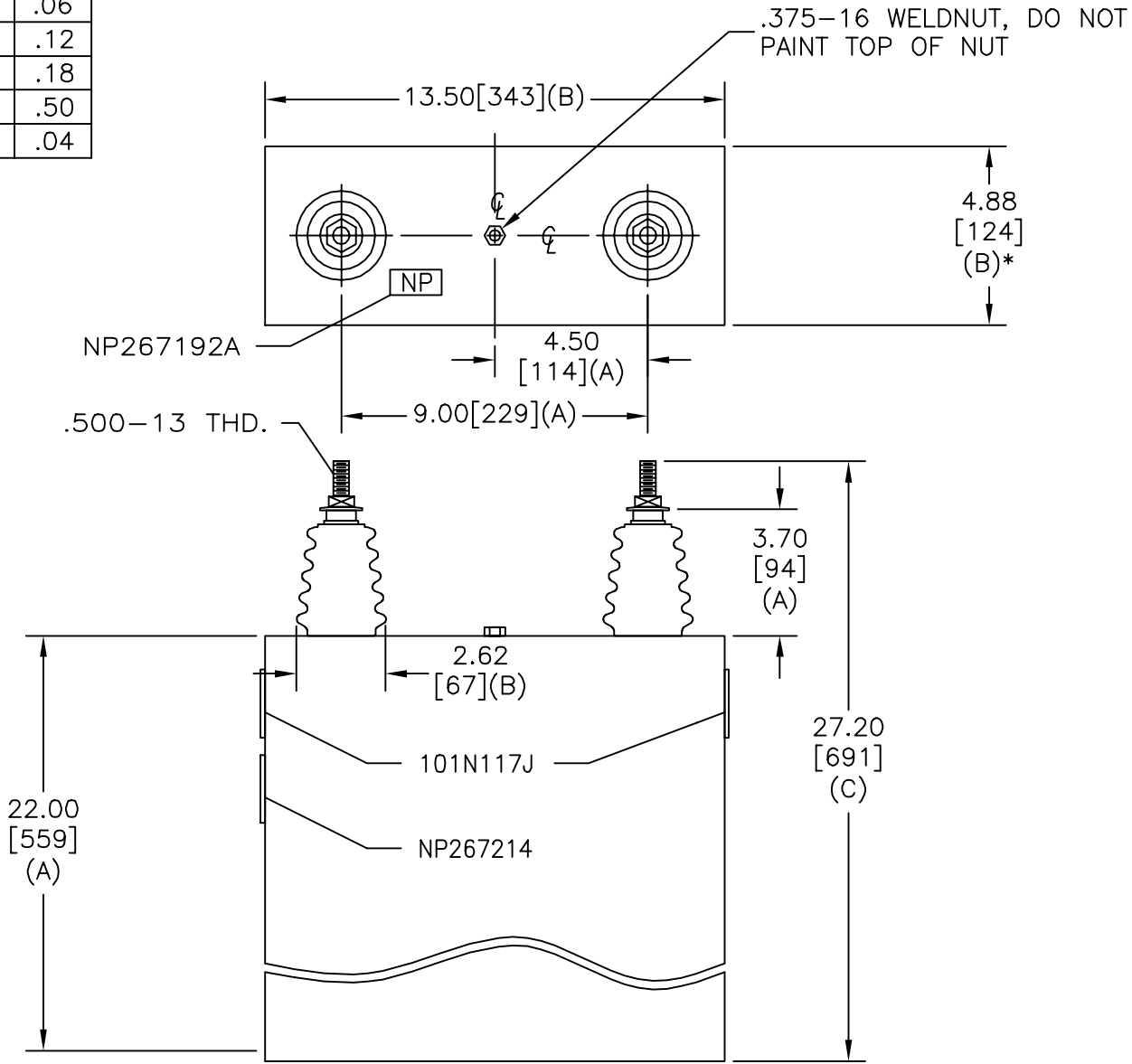


TOL	+/-
A	.06
B	.12
C	.18
D	.50
E	.04

SIZE A	DWG NO 16L0417WH1	SHT 2	REV 1
REV 1	DESCRIPTION CHG NP	DATE 11/27/02	APPROVED BTR



SCHEMATIC DIAGRAM - 102

WITH INTERNAL DISCH RESISTORS
 CAT. 16L0417WH1 SN
 200KVAR 2800V 50HZ 1PH
 81.2 UF
 1.90 GAL. COMBUSTIBLE LIQUID
 CAUTION! BEFORE INSTALLING OR
 OPERATING READ GEH-2743

NP267214

* UP TO +.50
CASE BULGE

MAX. TERMINAL
TIGHTENING TORQUE
15 FT-LBS

NP267192A

INDUSTRIAL SYSTEMS FORT EDWARD, N.Y., U.S.A.		SIZE A
		SCALE
DRAWN B. ROSS	DATE OCT. 1, 2002	
ISSUED	DATE 10/23/02	

OUTLINE
16L0417WH1

SHEET 2 CONT ON 3

DISTR. TO