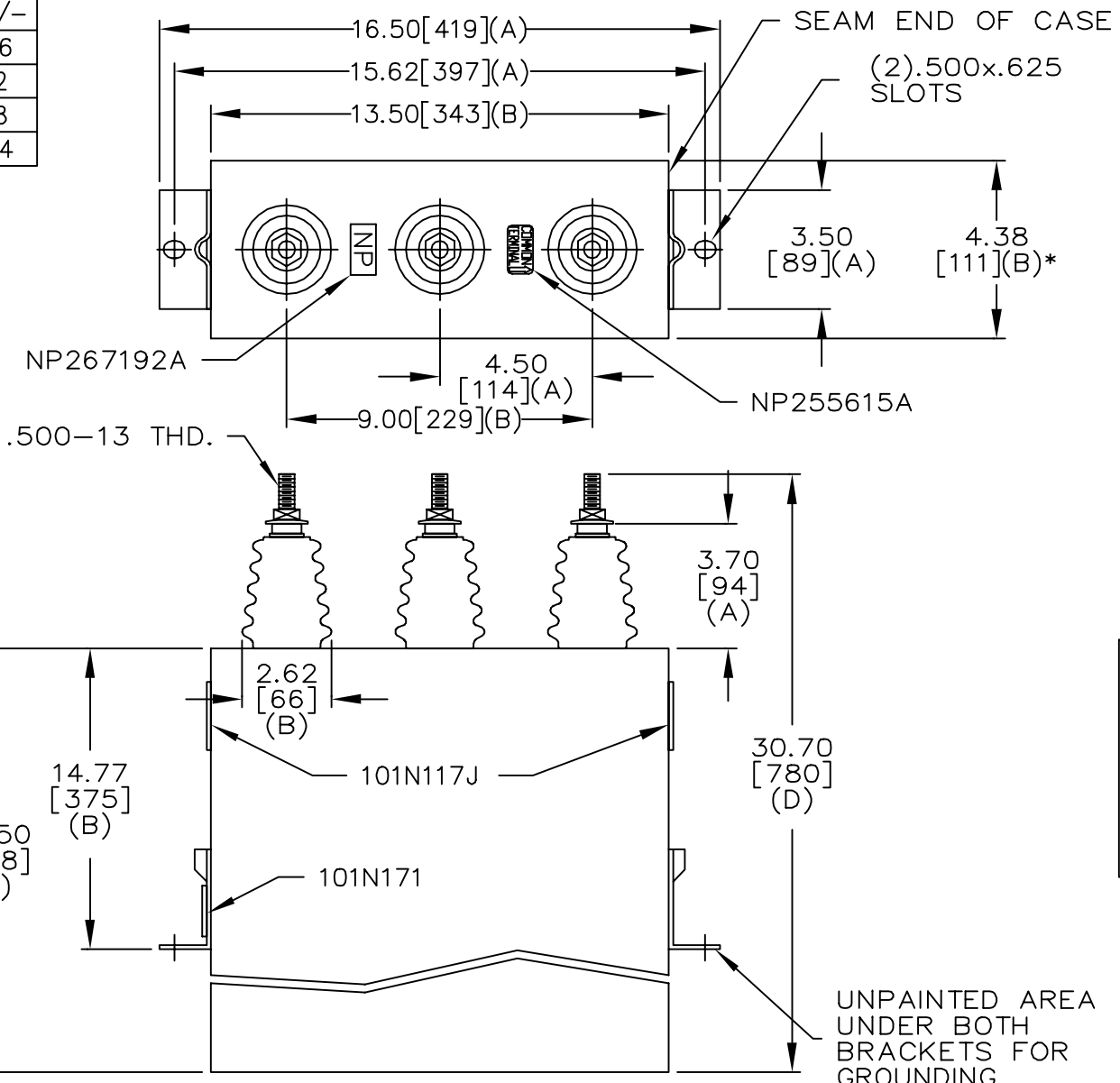
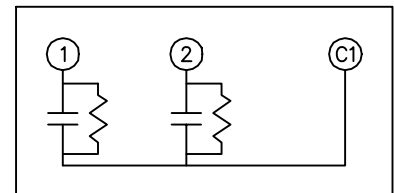


| TOL | +/- |
|-----|-----|
| A | .06 |
| B | .12 |
| C | .18 |
| D | .04 |

| | | | |
|-----------|-----------------------------|----------------|-----------------|
| SIZE A | DWG NO 16L0419WH3 | SHT 2 | REV 2 |
| REV 2 | DESCRIPTION KVAR WAS 260 | DATE 7-9-03 | APPROVED EJM |



| TERM | uF | KVAR |
|------|-------|------|
| 1 | 131.0 | 160 |
| 2 | 65.5 | 80 |



SCHEMATIC DIAGRAM - 212

160/80 KVAR
 1800V 1 PH
 240KVAR 60Hz KVBIL
 CAT. 16L0419WH3
 2.0 GAL.
 MFG DATE
 101N171 READ GEH-2743

MAX. TERMINAL
 TIGHTENING TORQUE
 15 FT-LBS

NP267192A

| | | |
|--|-----------------|-----------|
| INDUSTRIAL SYSTEMS FORT EDWARD, N.Y., U.S.A. | | SIZE A |
| DRAWN E. McGinn | DATE 9-19-96 | SCALE |
| ISSUED | DATE 9-25-96 | |

OUTLINE
 16L0419WH3

SHEET 2 CONT ON 3

DISTR. TO