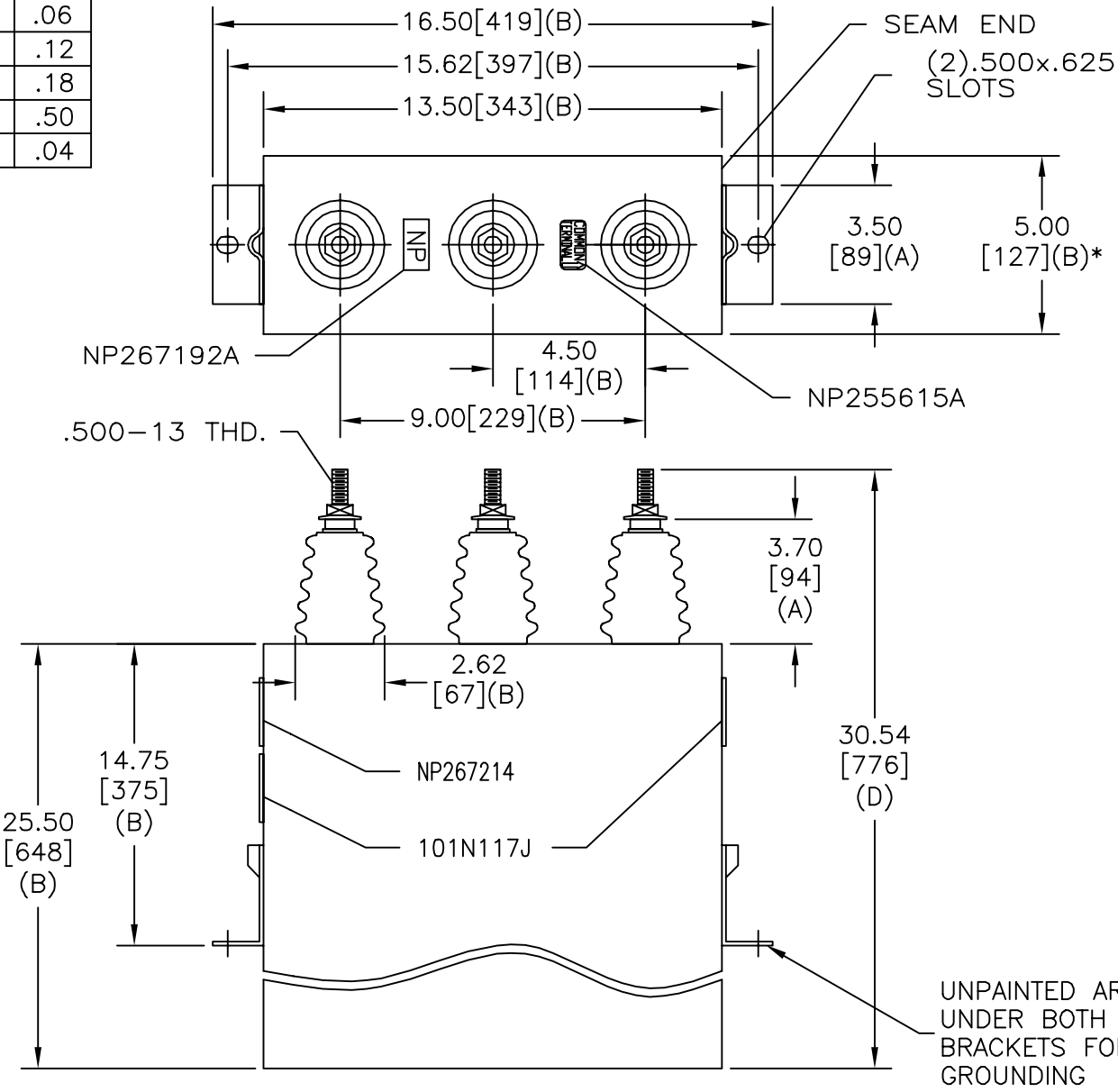
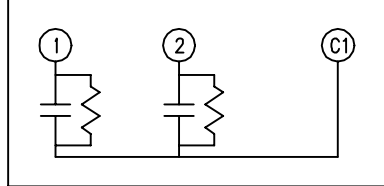


TOL	+/-
A	.06
B	.12
C	.18
D	.50
E	.04

SIZE A	DWG NO 16L0426WH3	SHT 2	REV 1
REV 1	DESCRIPTION NP267214 WAS 101N121	DATE 5-21-03	APPROVED EJM



TERM	uF	kVAR
1	152.7	160
2	78.6	80



SCHEMATIC DIAGRAM - 212

WITH INTERNAL DISCH RESISTORS  
 1800V 1 PH KVBIL  
 240 KVAR 50 Hz  
 CAT 16L0426WH3 SN  
 2.40 GAL.  
 MFG DATE  
 101N171 READ GEH- 2743

CAT. 16L0426WH3 SN  
 240KVAR 1800V 50HZ 1PH  
 MAX KVAR 295 MAX VOLTS 2000V  
 FORCED AIR COOLING REQUIRED  
 NP267214

\* UP TO +.50[13] CASE BULGE

MAX. TERMINAL TIGHTENING TORQUE 15 FT-LBS

NP267192A

INDUSTRIAL SYSTEMS FORT EDWARD, N.Y., U.S.A.		SIZE A
DRAWN B. ROSS	DATE MAR 14, 2003	SCALE
ISSUED	DATE 3/19/03	

# OUTLINE 16L0426WH3

DISTR. TO