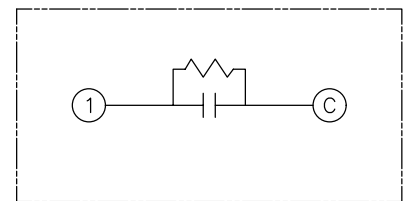
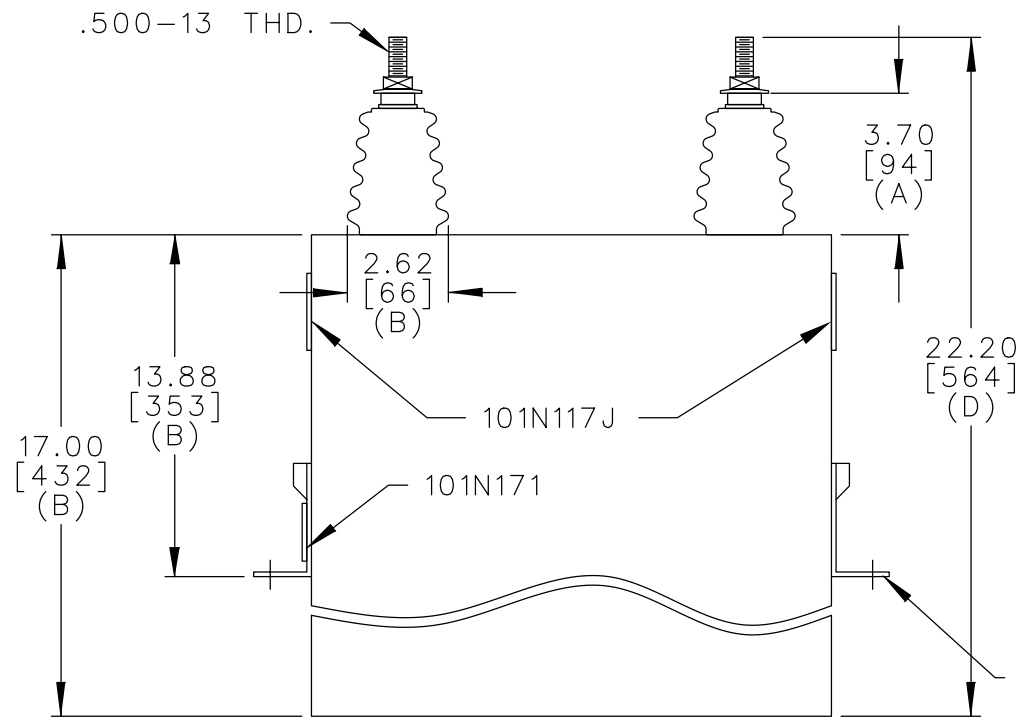
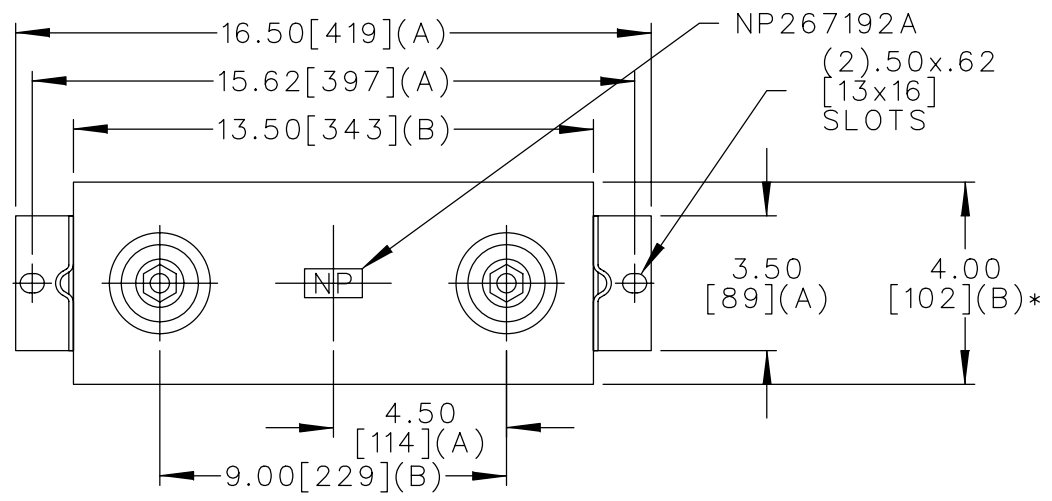


TOL	+/-
A	.06
B	.12
C	.18
D	.04

SIZE A	DWG NO. 16L0429WH3	SH 2	REV
REV 1	McGINN UPDATE CAT NO		



SCHEMATIC DIAGRAM - 102

2500 V	1 PH
150 KVAR	60 HZ
CAT. 16L0429WH3	NO. KV BIL
101N171	1.3 GAL.
	GEH-2743

* UP TO +.50[13] CASE BULGE

MAX. TERMINAL TIGHTENING TORQUE 15 FT-LBS

NP267192A

	CAPACITOR & POWER PROTECTION FORT EDWARD, N.Y., U.S.A.		SIZE A	FSCM NO	<h1>OUTLINE</h1> <h2>16L0429WH3</h2>	DISTR TO
	DRAWN E.McGINN ISSUED 7-22-98	JULY 21, 1998 7-22-98	SCALE	SHEET 2 CONT ON 3		