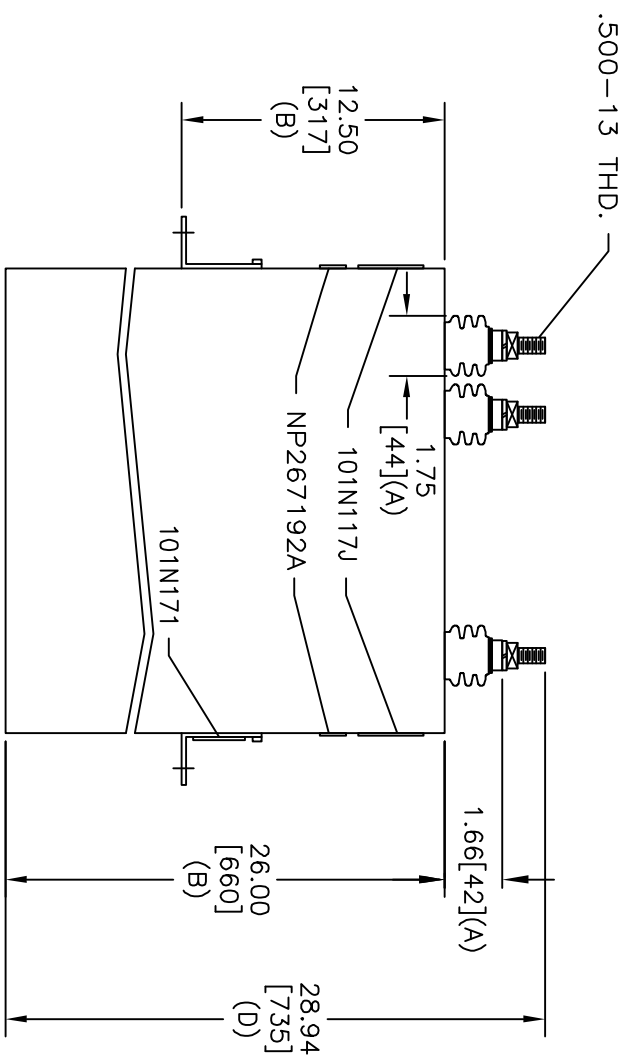
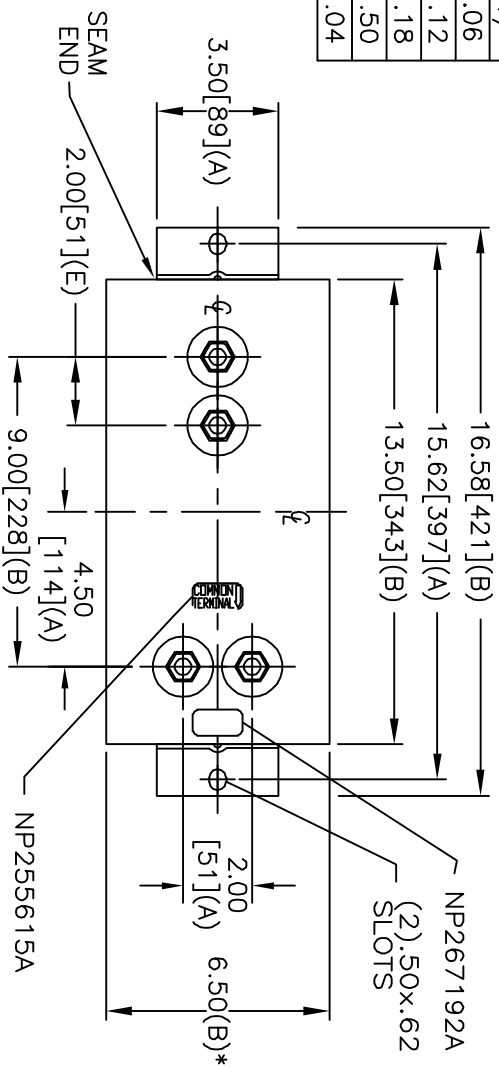


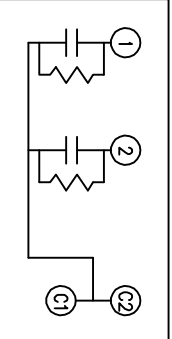
TOL	+/-
A	.06
B	.12
C	.18
D	.50
E	.04



SIZE	DWG NO	SHT	REV
A	16L0433WH3	2	1
REV	DESCRIPTION	DATE	APPROVED
1	ADD SEAM END	5-10-04	EJM

* UP TO +.50 CASE BULGE

TERM	UF	KVAR
1	617.6	128
2	617.6	128



SCHEMATIC DIAGRAM - 217

GE	740 V	1 PH	KVBIL
CAT	255	60 Hz	
	16L0433WH3	SN	
	3.1 GAL.		
	MFG DATE		
	READ	GEH-2743	
	101N171		

OUTLINE

16L0433WH3

INDUSTRIAL SYSTEMS
FORT EDWARD, N.Y., U.S.A.

DRAWN **E. McGinn** DATE **9-28-99**

ISSUED DATE **9-29-99**

SIZE **A**

MAX. TERMINAL
TIGHTENING TORQUE
15 FT-LBS

NP267192A