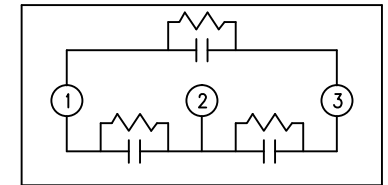
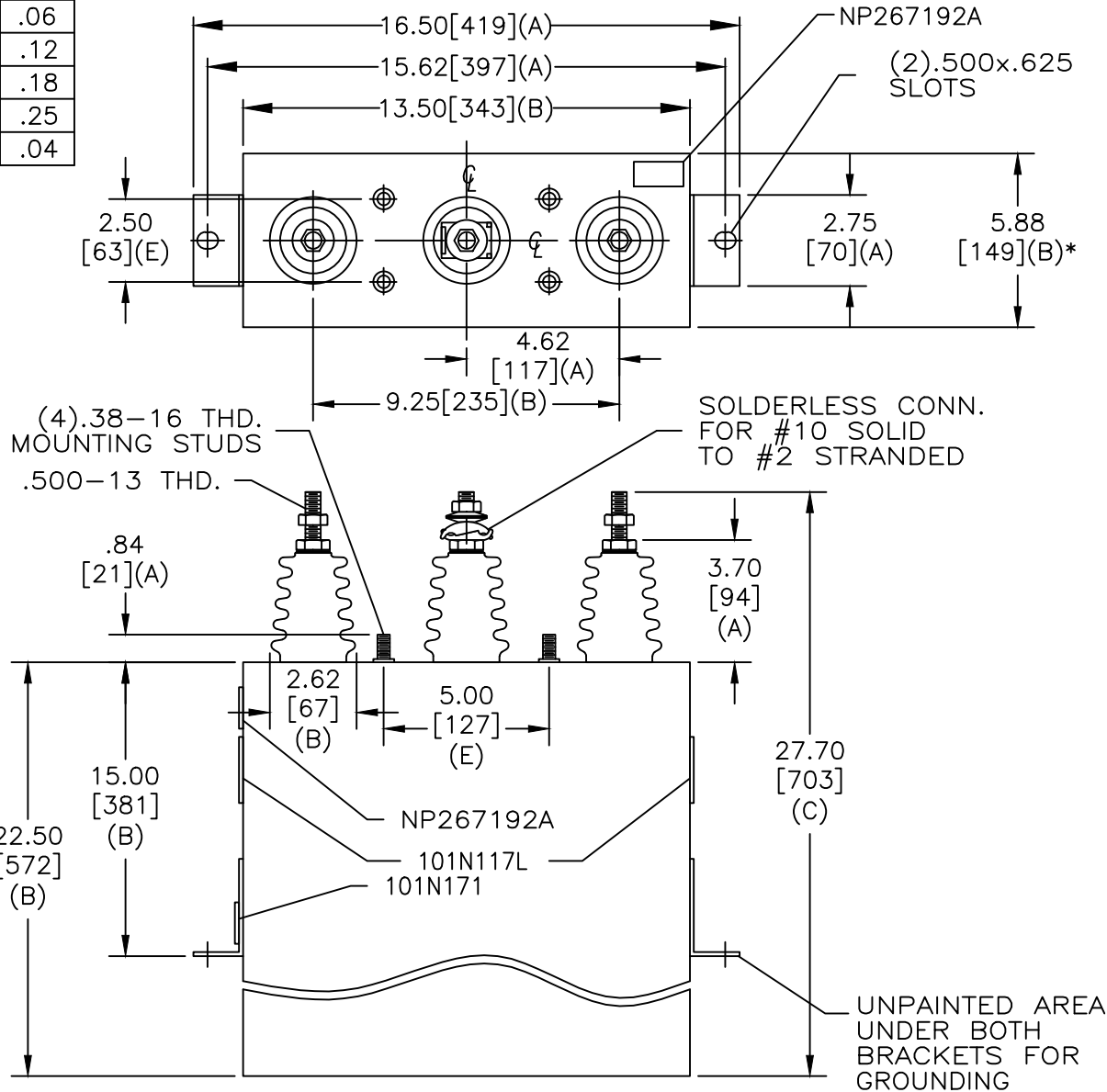


TOL	+/-
A	.06
B	.12
C	.18
D	.25
E	.04

SIZE A	DWG NO 16L0451WH3	SHT 2	REV
REV	DESCRIPTION	DATE	APPROVED



SCHEMATIC DIAGRAM - 302

DELTA CONN		
3300V	3PH	60 kVBIL
275 KVAR	50 Hz	
CAT 16L0451WH3	SN	
2.2 GAL.		
MFG DATE		
101N171	READ GEH- 2743	

* UP TO +.50 [13] CASE BULGE

MAX. TERMINAL TIGHTENING TORQUE 15 FT-LBS

NP267192A

GE ENERGY FORT EDWARD, N.Y., U.S.A.		SIZE A
DRAWN	HBO	DATE 2/24/2015
ISSUED		DATE 2/24/2015

OUTLINE
16L0451WH3

SCALE	SHEET 2	CONT ON 3
-------	---------	-----------

DISTR. TO