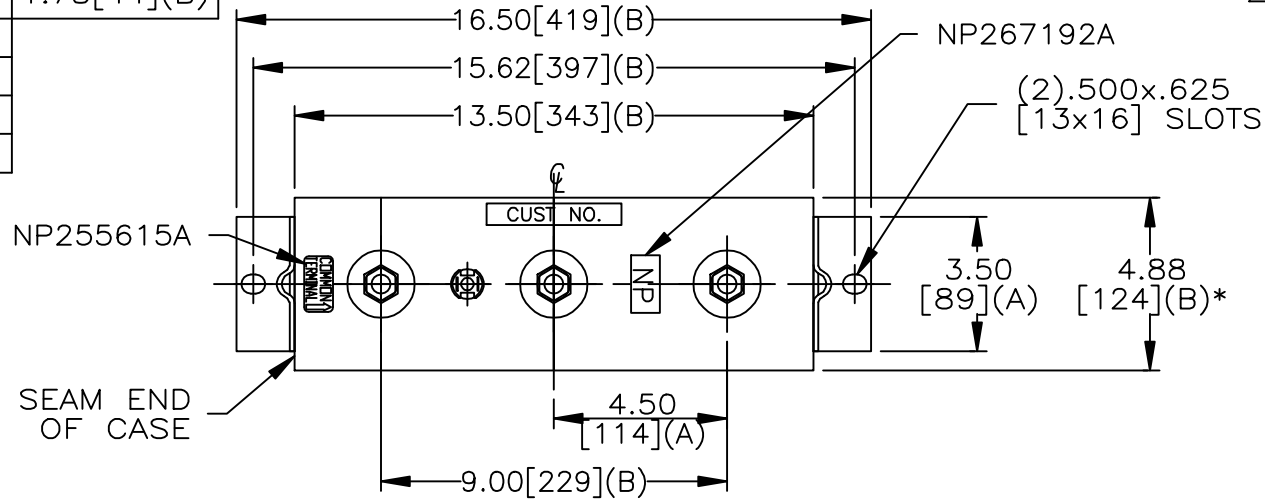
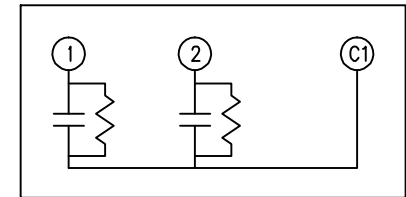


SIZE A	DWG NO 16L0574TA4	SHT 2	REV 12
REV 12	DESCRIPTION WAS MADE IN MEXICO	DATE 3/22/2010	APPROVED BTR

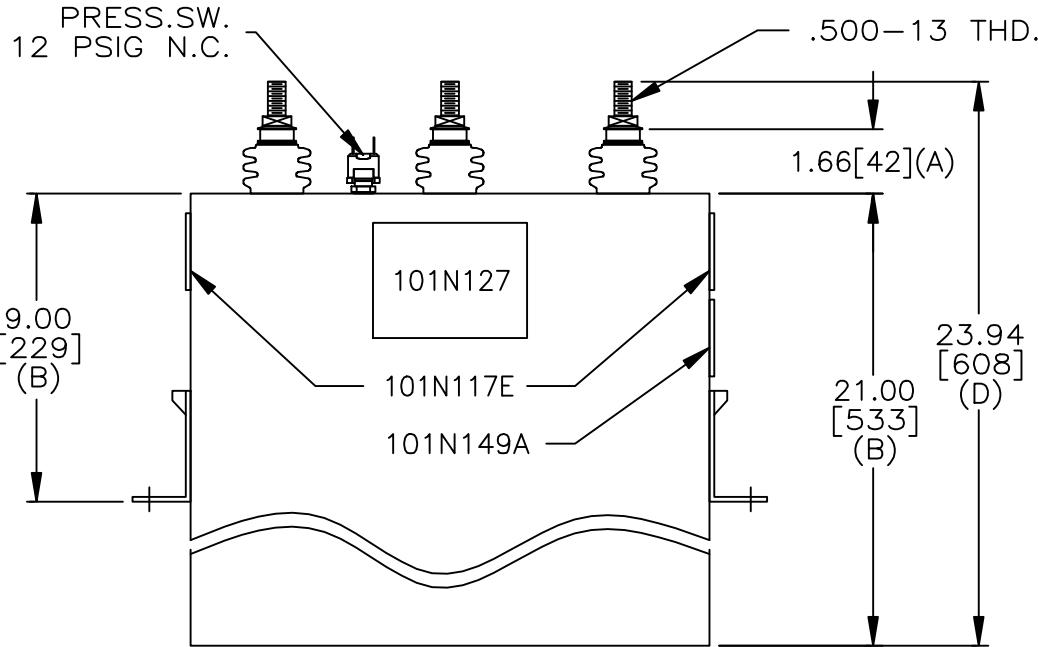
TOL	+/-	BUSH. DIA.
A	.06	1.75[44](B)
B	.12	
C	.18	
D	.50	
E	.04	



TERM	uF	kVAR
1	471.6	100
2	471.6	100



SCHEMATIC DIAGRAM - 212



PN# SC 31073A50 SER. NO.
 KVAR 200 VOLTS 750 HZ 60
 PH 1 NO.TAPS 2 MFD/TAP 471.6
 WITH INTERNAL DISCH RESISTORS
 CONTAINS 2.8 GALS. NO PCB
 COMBUSTIBLE FLUID. OSHA CLASS III-B
 101N149A MADE IN USA

SC 31073A50
 200 KVAR 750V 60Hz
 2X100 KVAR/TAP

NP267257
 * UP TO +.50[13]
 CASE BULGE

MAX. TERMINAL
 TIGHTENING TORQUE
 15 FT-LBS

NP267192A

GE ENERGY FORT EDWARD, N.Y., U.S.A.		SIZE A
DRAWN E. McGinn	DATE 5/23/1990	SCALE
ISSUED	DATE 5/30/1990	

OUTLINE
16L0574TA4

SHEET 2 CONT ON 3

DISTR. TO