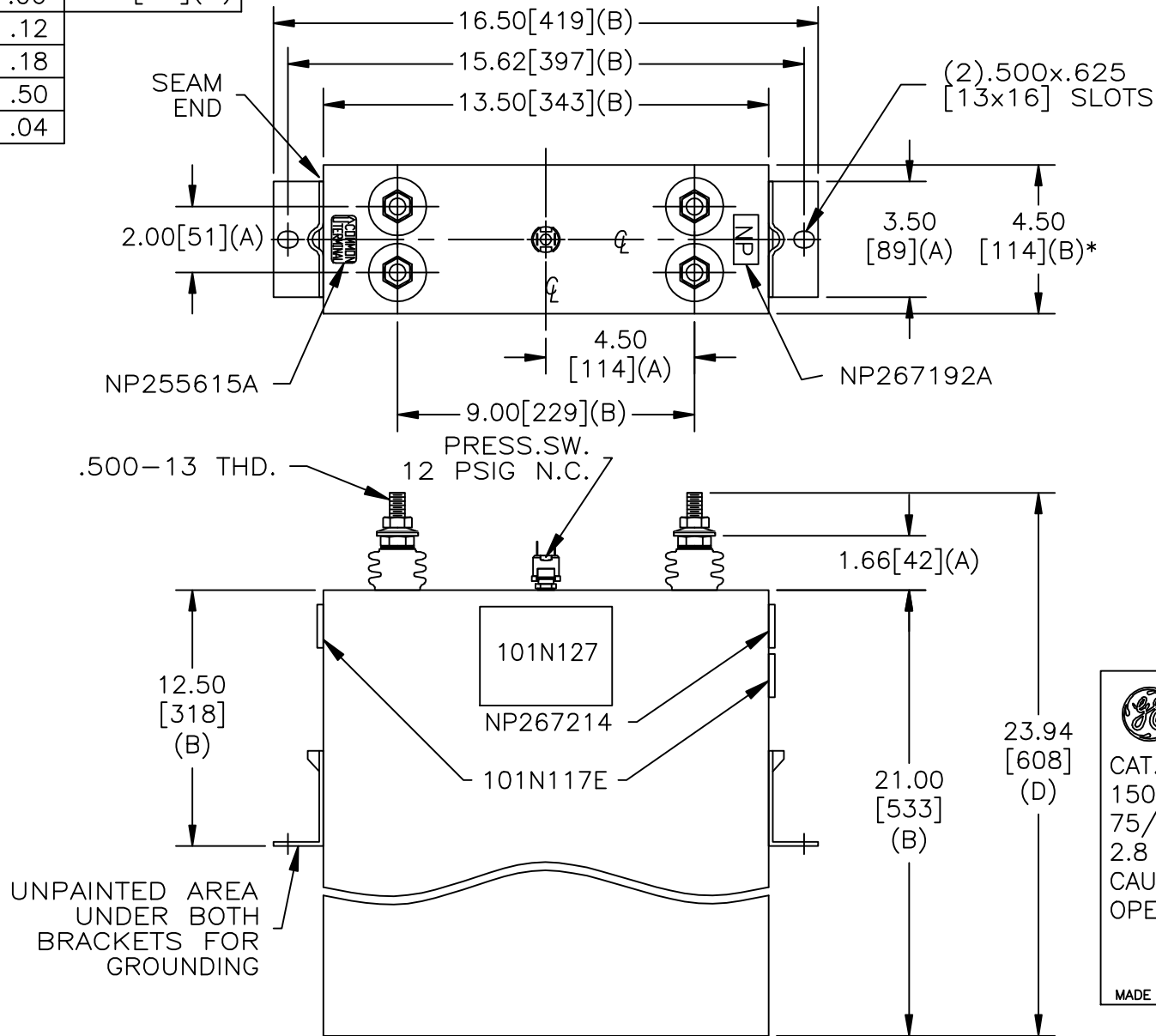
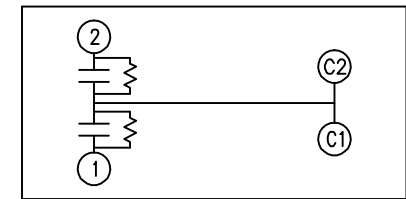


SIZE A	DWG NO 16L0576TH4	SHT 2	REV 5
REV 5	DESCRIPTION CHANGE NAMEPLATE	DATE 8/4	APPROVED BTR

TOL	+/-	BUSH. DIA.
A	.06	1.75[44](B)
B	.12	
C	.18	
D	.50	
E	.04	



TERM	uF	KVAR
1	940.2	75
2	940.2	75



**GE** CAPACITOR  
WITH INTERNAL DISCHARGE RESISTORS

CAT. 16L0576TH4 SN  
150KVAR 460V 60HZ 1PH  
75/75  
2.8 GAL. COMBUSTIBLE LIQUID  
CAUTION! BEFORE INSTALLING OR  
OPERATING READ GEH-2743

MADE IN U.S.A. NP267214

\* UP TO +.50[13]  
CASE BULGE

MAX. TERMINAL  
TIGHTENING TORQUE  
15 FT-LBS

NP267192A

GE ENERGY FORT EDWARD, N.Y., U.S.A.		SIZE A
DRAWN E. McGinn	DATE 5/1/1990	SCALE
ISSUED	DATE 6/7/1990	

OUTLINE  
16L0576TH4

SHEET 2 CONT ON 3

DISTR. TO