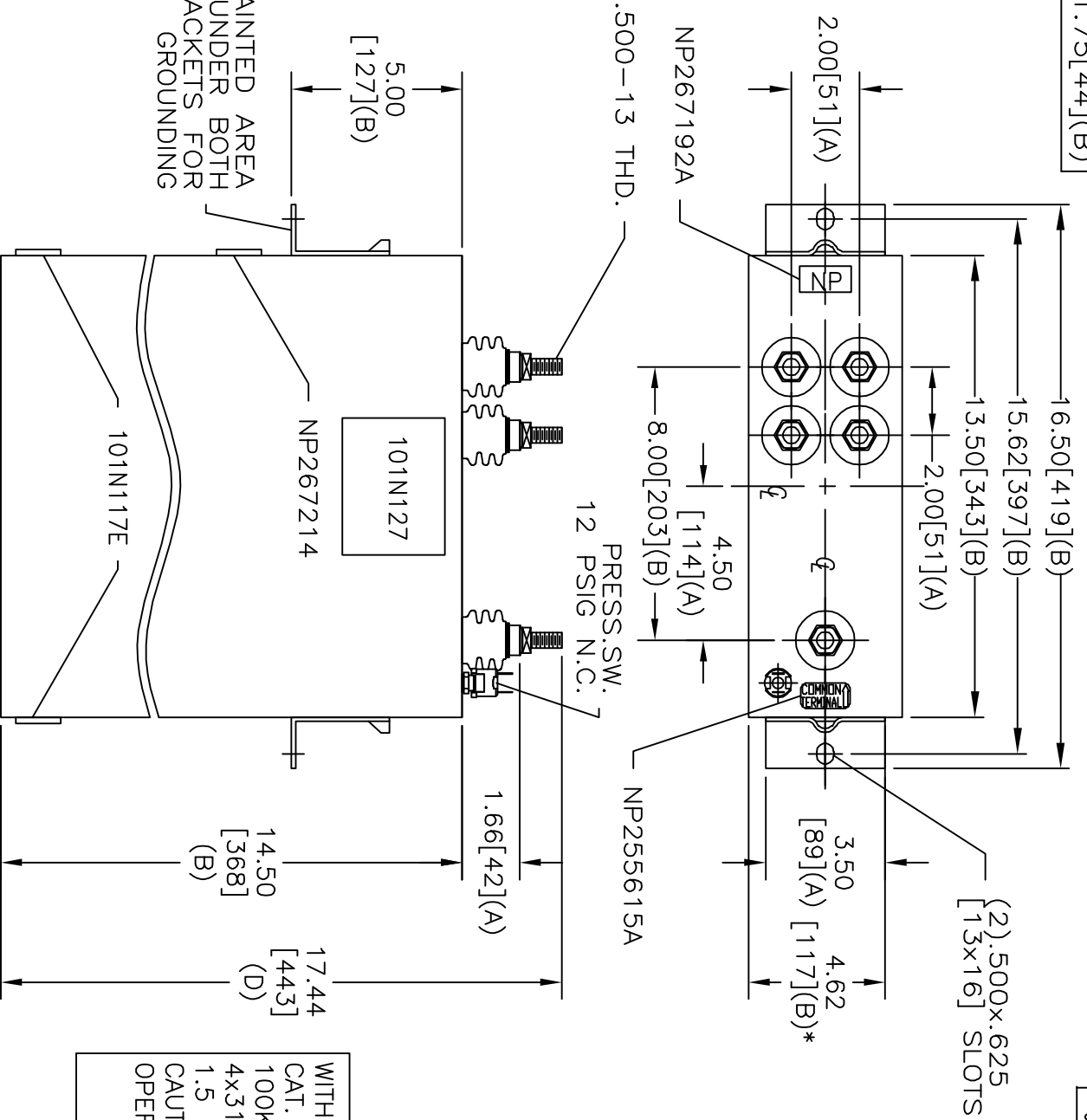
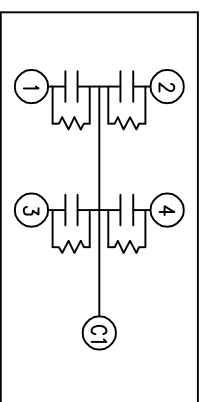


TOL	+/-	BUSH. DIA.
A	.06	1.75[.44](B)
B	.12	
C	.18	
D	.25	
E	.04	



(2).500x.625
[13x16] SLOTS

TERM	UF	KVAR
1	313.4	25
2	313.4	25
3	313.4	25
4	313.4	25



SCHEMATIC DIAGRAM - 427

WITH INTERNAL DISCH RESISTORS
 CAT. 16L0583TH4 SN
 100KVAR 460V 60HZ 1PH
 4x313.4 UF/TAP
 1.5 GAL. COMBUSTIBLE LIQUID
 CAUTION! BEFORE INSTALLING OR
 OPERATING READ GEH-2743
 NP267214

SIZE	DWG NO	SHT	REV
A	16L0583TH4	2	6
REV	DESCRIPTION	DATE	APPROVED
6	CHANGE NAMEPLATE	12/21/05	BTR

* UP TO +.50[13]
CASE BULGE

MAX. TERMINAL
TIGHTENING TORQUE
15 FT-LBS

GE ENERGY
FORT EDWARD, N.Y., U.S.A.

DRAWN E. McGinn DATE JUN 6, 1996

ISSUED DATE 6/19/96

SIZE
A

OUTLINE
16L0583TH4

SHEET 2 CONT 3