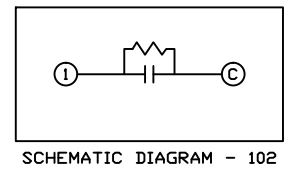
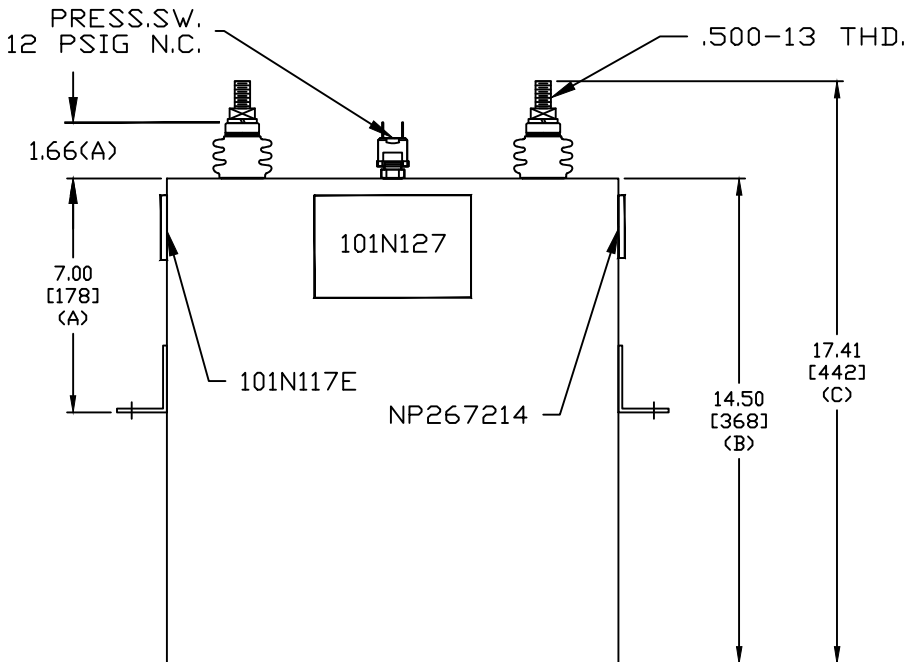
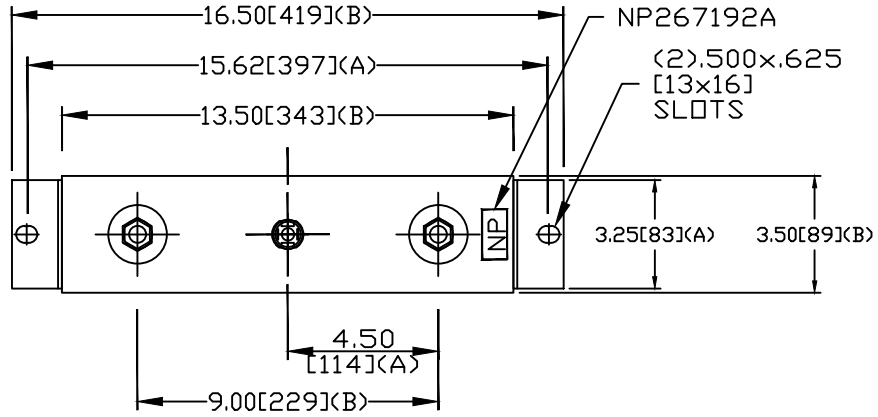


SIZE A	DWG NO 16L0586TH4	SHT 2	REV 1
REV 1	DESCRIPTION ADD CUST NO	DATE 6/11/2012	APPROVED JBC

TOL	+/-	BUSH. DIA.
A	.06	1.75[44](B)
B	.12	
C	.18	
D	.50	
E	.04	



CAPACITOR
WITH INTERNAL DISCH RESISTORS

CAT. 16L0586TH4 SN
81.9 KVAR 277V 60HZ 1PH
CUST NO. 41A296302BXP2
1.2 GAL. COMBUSTIBLE LIQUID
CAUTION! BEFORE INSTALLING OR
OPERATING READ GEH2743 + 2741

MADE IN U.S.A. NP267214

* UP TO +.50[13] CASE BULGE

MAX. TERMINAL
TIGHTENING TORQUE
15 FT-LBS

NP267192A

GE ENERGY FORT EDWARD, N.Y., U.S.A.		SIZE A
DRAWN JBCozzens	DATE 10/13/2010	SCALE
ISSUED	DATE 10/13/2010	

OUTLINE
16L0586TH4

SHEET 2 CONT ON 3

DISTR. TO