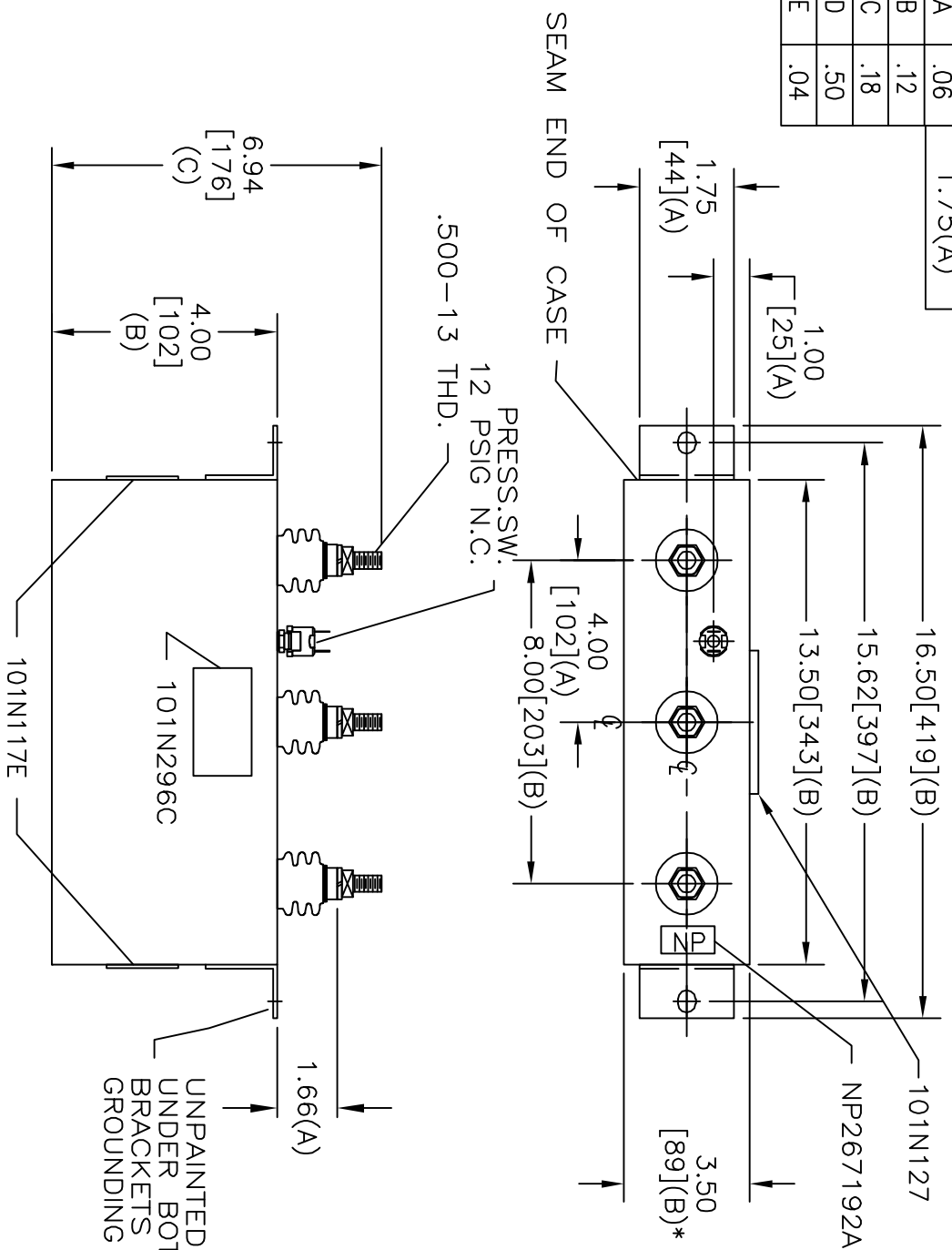
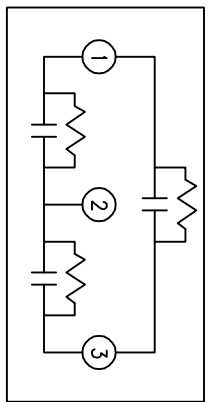


TOL	+/-	BUSH DIA
A	.06	1.75(A)
B	.12	
C	.18	
D	.50	
E	.04	



SIZE	DWG NO	SHT	REV
A	16L1521TH4	2	1
REV	DESCRIPTION	DATE	APPROVED
1	CHG NP	5-18-05	EJM



SCHEMATIC DIAGRAM - 302

POWER FACTOR CORRECTION
 WITH INTERNAL DISCHARGE RESISTORS
 CAT. 16L1521TH4 SN
 10KVAR 240V 60HZ 3PH
 DELTA CONN
 CONTAINS .39 GAL. COMBUSTIBLE LIQUID WITH LESS THAN
 ONE PART PER MILLION PCB ON MFG DATE M/M/YY
 CAUTION! BEFORE INSTALLING OR OPERATING READ GEH-2743+2741
 101N296C
 MADE IN USA

* UP TO +.50
 CASE BULGE

MAX. TERMINAL
 TIGHTENING TORQUE
 15 FT-LBS

NP267192A



INDUSTRIAL SYSTEMS
 FORT EDWARD, N.Y., U.S.A.

DRAWN	E. McGinn	DATE	9-6-01
ISSUED		DATE	9-12-01

SIZE A
 SCALE

OUTLINE
 16L1521TH4

SHEET	2	CONT	3
ON			