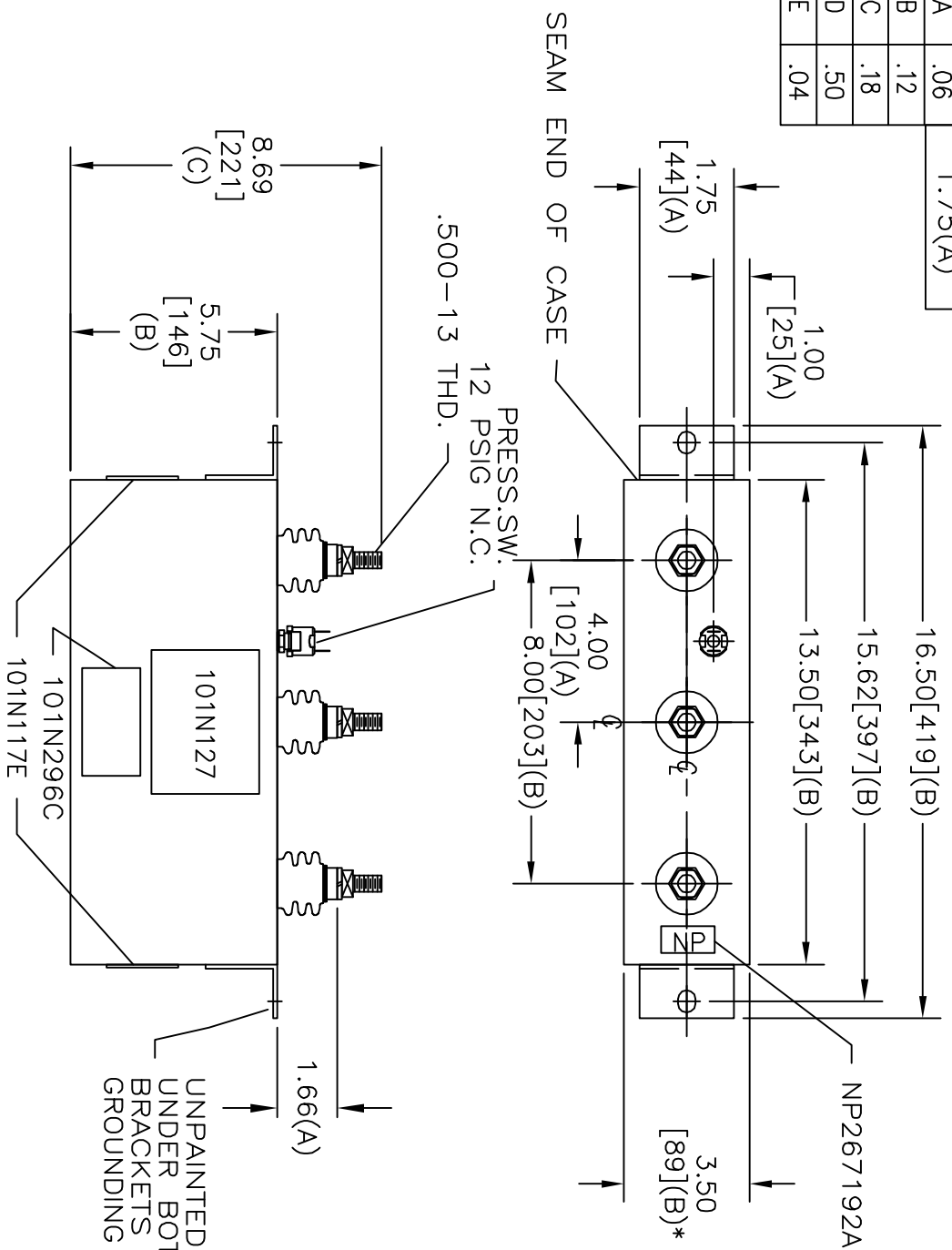
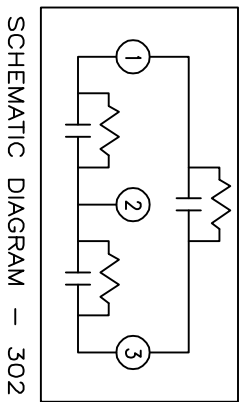


| | | |
|-----|-----|----------|
| TOL | +/- | BUSH DIA |
| A | .06 | 1.75(A) |
| B | .12 | |
| C | .18 | |
| D | .50 | |
| E | .04 | |



| | | | |
|------|-------------|---------|----------|
| SIZE | DWG NO | SHT | REV |
| A | 16L1523TH4 | 2 | 1 |
| REV | DESCRIPTION | DATE | APPROVED |
| 1 | CHG NP | 5-11-05 | EJM |

UNPAINTED AREA UNDER BOTH BRACKETS FOR GROUNDING



SCHEMATIC DIAGRAM - 302

POWER FACTOR CORRECTION
 WITH INTERNAL DISCHARGE RESISTORS
 CAT. 16L1523TH4 SN
 20KVAR 240V 60HZ 3PH
 DELTA CONN
 CONTAINS .57 GAL. COMBUSTIBLE LIQUID WITH LESS THAN ONE PART PER MILLION PCB ON MFG DATE M/M/YY
 CAUTION! BEFORE INSTALLING OR OPERATING READ GEH-2743+2741

RV MADE IN USA

* UP TO +.50 CASE BULGE

MAX. TERMINAL TIGHTENING TORQUE 15 FT-LBS

NP267192A

INDUSTRIAL SYSTEMS
 FORT EDWARD, N.Y., U.S.A.

| | | | |
|--------|-----------|------|---------|
| DRAWN | E. McGinn | DATE | 9-6-01 |
| ISSUED | | DATE | 9-12-01 |

SIZE A SCALE

OUTLINE
 16L1523TH4

SHEET 2 CONT ON 3

DISTR. TO