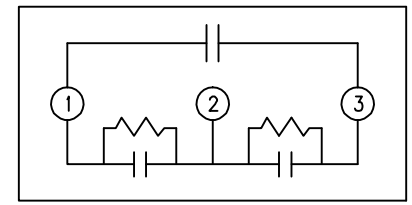
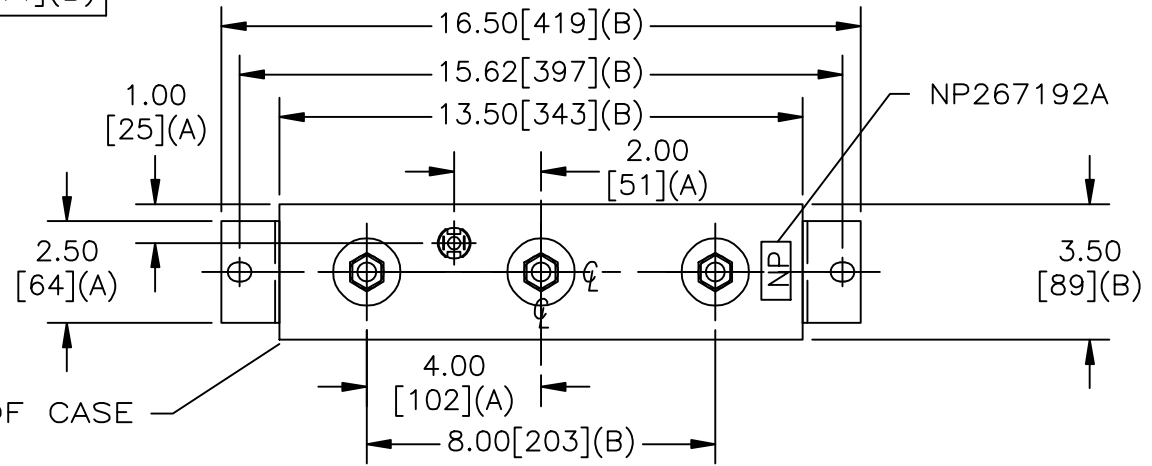
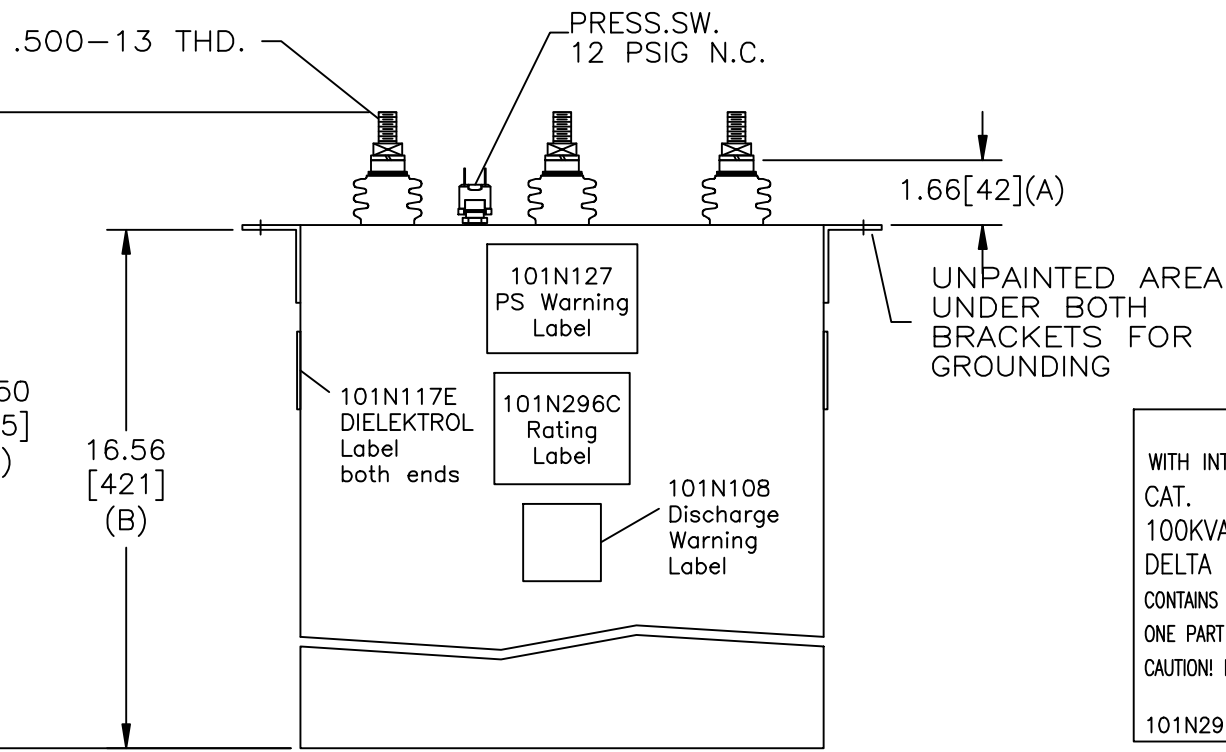



SIZE A	DWG NO 16L1540TH4	SHT 2	REV 3
REV 3	DESCRIPTION ADD 101N108	DATE 6/17/2009	APPROVED BTR

TOL	+/-	BUSH. DIA.
A	.06	1.75[44](B)
B	.12	
C	.18	
D	.50	
E	.04	




SCHMATIC DIAGRAM - 304



POWER FACTOR CORRECTION
 WITH INTERNAL DISCHARGE RESISTORS
 CAT. 16L1540TH4 SN
 100KVAR 480V 60HZ 3PH
 DELTA CONN
 CONTAINS 1.2 GAL. COMBUSTIBLE LIQUID WITH LESS THAN
 ONE PART PER MILLION PCB ON MFG DATE MMM YY
 CAUTION! BEFORE INSTALLING OR OPERATING READ GEH-2743+2741
 101N296C  MADE IN USA

* UP TO +.50
CASE BULGE

MAX. TERMINAL
TIGHTENING TORQUE
15 FT-LBS
NP267192A

	GE ENERGY FORT EDWARD, N.Y., U.S.A.		SIZE A	OUTLINE 16L1540TH4
	DRAWN E. McGinn	DATE OCT 4, 2001	SCALE	
ISSUED	DATE 10/10/01	SHEET 2	CONT ON 3	DISTR. TO