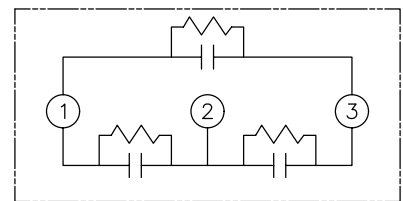
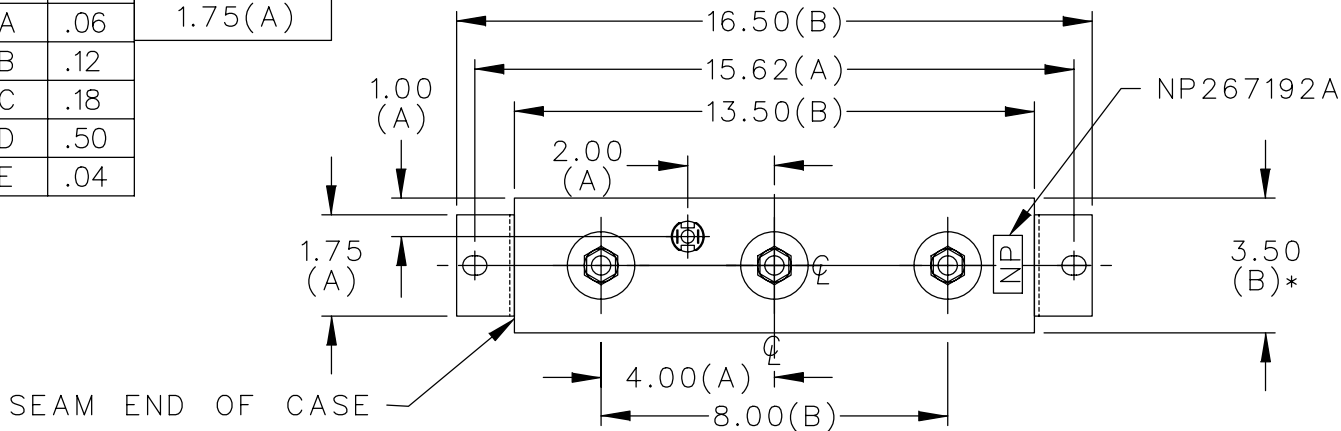
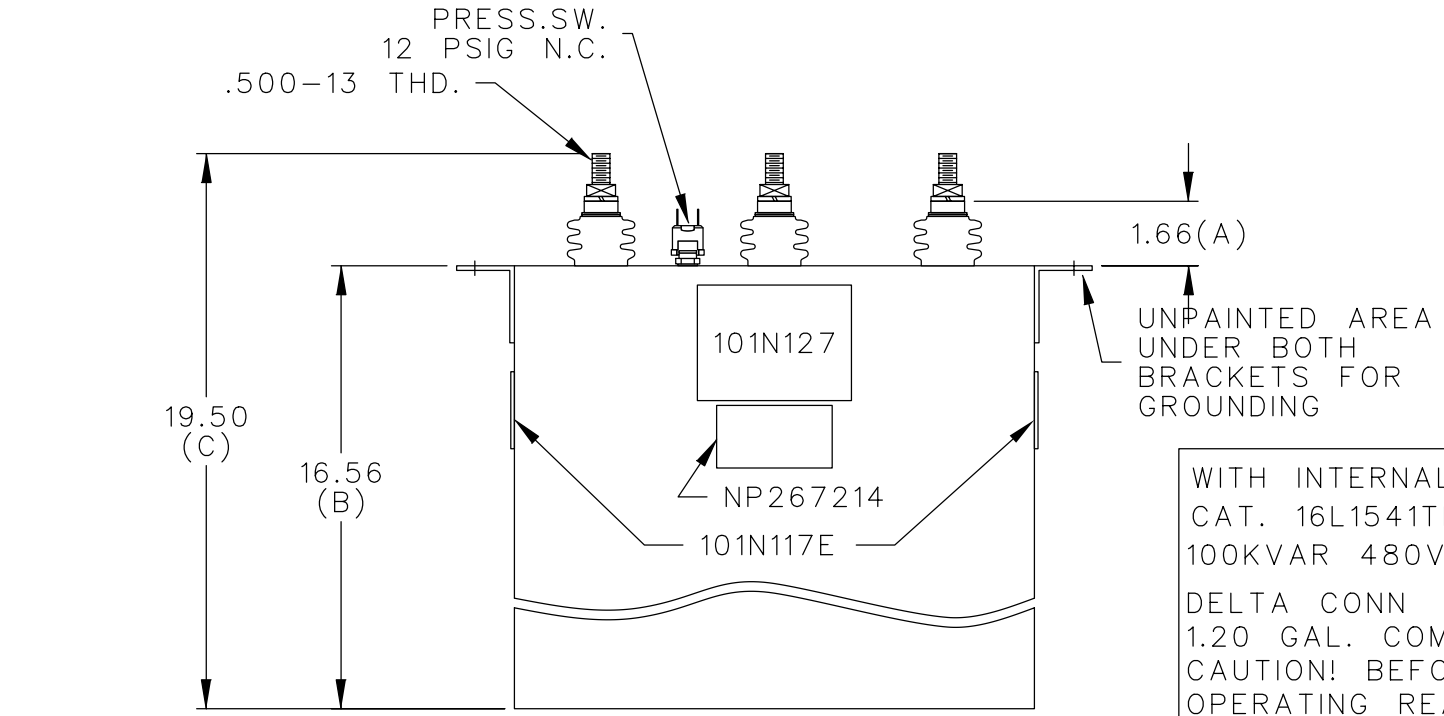


SIZE <b>A</b>	DWG NO. 16L1541TH4	SH	REV
REV		DATE	

TOL	+/-	BUSH DIA
A	.06	1.75(A)
B	.12	
C	.18	
D	.50	
E	.04	



SCHEMATIC DIAGRAM - 302



WITH INTERNAL DISCH RESISTORS  
 CAT. 16L1541TH4 SN  
 100KVAR 480V 60HZ 3PH  
 DELTA CONN  
 1.20 GAL. COMBUSTIBLE LIQUID  
 CAUTION! BEFORE INSTALLING OR  
 OPERATING READ GEH2743+2741  
 MADE IN MEXICO

NP267214

\* UP TO +.50  
 CASE BULGE

MAX. TERMINAL  
 TIGHTENING TORQUE  
 15 FT-LBS

NP267192A

	CAPACITOR & POWER PROTECTION FORT EDWARD, N.Y., U.S.A.		SIZE <b>A</b>	<h1>OUTLINE</h1> <h2>16L1541TH4</h2>		DISTR TO
	DRAWN E.McGINN	SEPT. 6, 2001	SCALE			
ISSUED			SHEET 2	CONT. 3	ON 3	