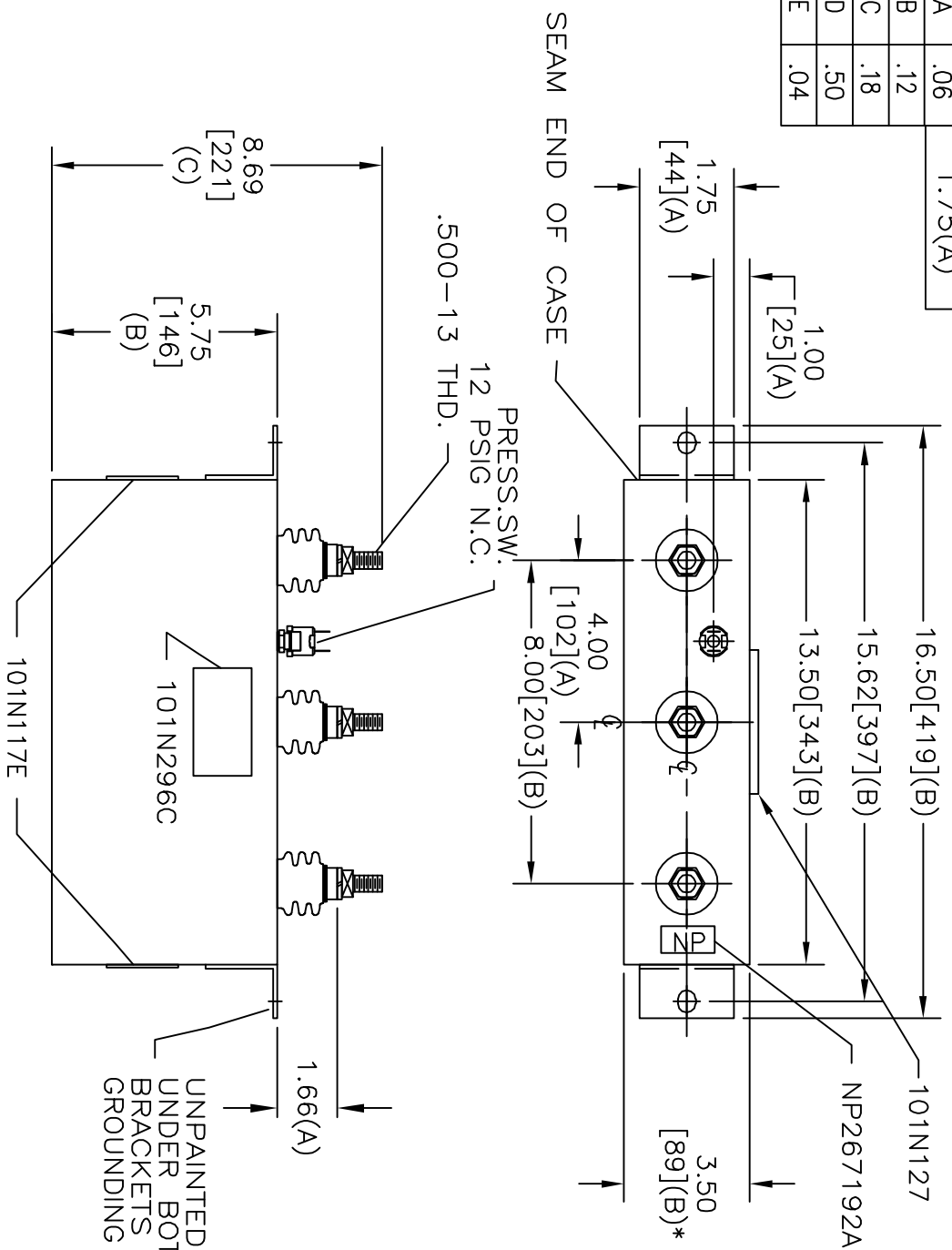
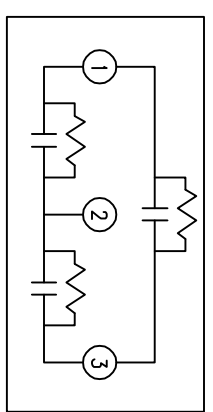


|     |     |          |
|-----|-----|----------|
| TOL | +/- | BUSH DIA |
| A   | .06 | 1.75(A)  |
| B   | .12 |          |
| C   | .18 |          |
| D   | .50 |          |
| E   | .04 |          |



|      |             |         |          |
|------|-------------|---------|----------|
| SIZE | DWG NO      | SHT     | REV      |
| A    | 16L1542TH4  | 2       | 2        |
| REV  | DESCRIPTION | DATE    | APPROVED |
| 2    | CHG NP      | 5-11-05 | EJM      |



SCHEMATIC DIAGRAM - 302

POWER FACTOR CORRECTION  
 WITH INTERNAL DISCHARGE RESISTORS  
 CAT. 16L1542TH4 SN  
 25KVAR 480V 60HZ 3PH  
 DELTA CONN  
 CONTAINS .57 GAL. COMBUSTIBLE LIQUID WITH LESS THAN  
 ONE PART PER MILLION PCB ON MFG DATE M/M/YY  
 CAUTION! BEFORE INSTALLING OR OPERATING READ GEH-2743+2741  
 101N296C  
**RV** MADE IN USA

\* UP TO +.50  
 CASE BULGE

MAX. TERMINAL  
 TIGHTENING TORQUE  
 15 FT-LBS

NP267192A



INDUSTRIAL SYSTEMS  
 FORT EDWARD, N.Y., U.S.A.

|        |           |      |          |
|--------|-----------|------|----------|
| DRAWN  | E. McGinn | DATE | 10-4-01  |
| ISSUED |           | DATE | 10-10-01 |

SIZE A  
 SCALE

OUTLINE  
 16L1542TH4

SHEET 2 CONT 3

DISTR. TO