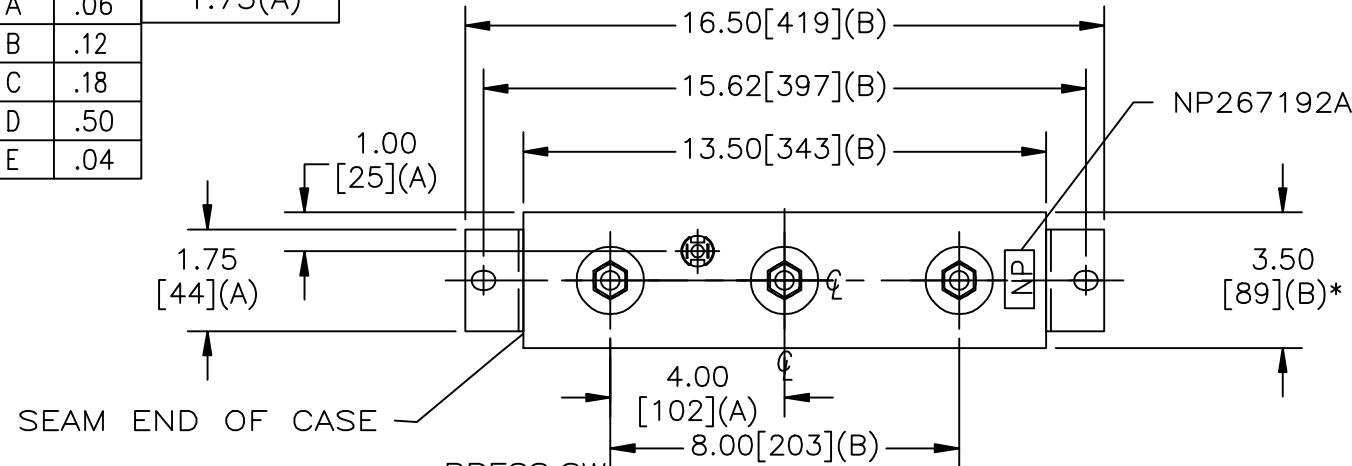


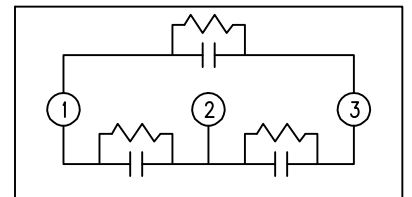
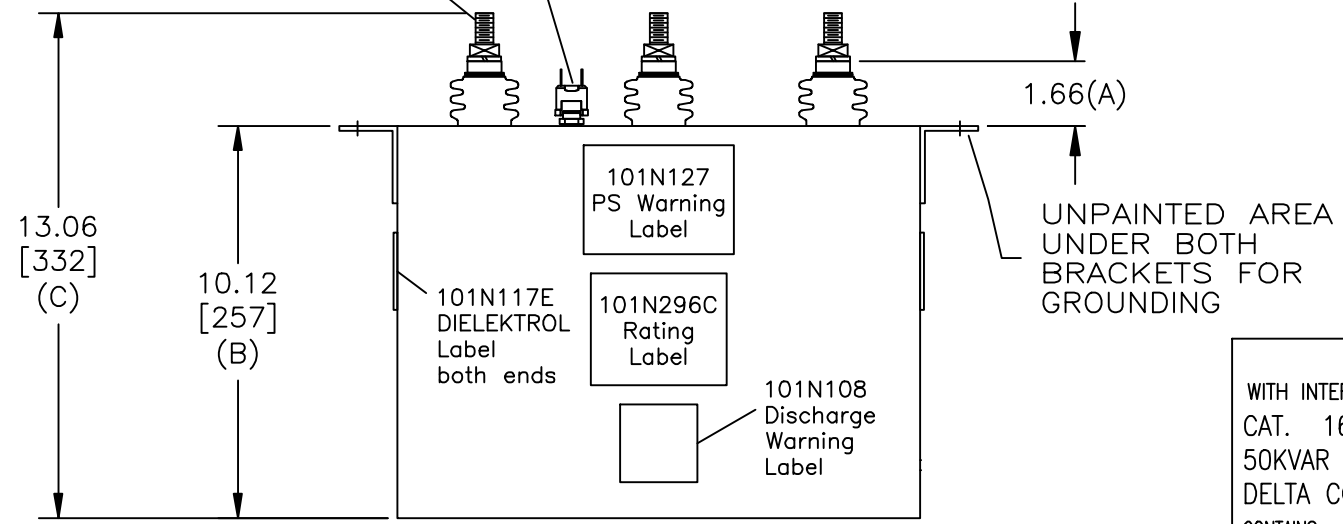
SIZE A	DWG NO 16L1545TH4	SHT 2	REV 1
REV 2	DESCRIPTION ADD 101N108	DATE 6/17/2009	APPROVED BTR

TOL	+/-	BUSH DIA
A	.06	1.75(A)
B	.12	
C	.18	
D	.50	
E	.04	




SEAM END OF CASE

PRESS.SW.
12 PSIG N.C.
.500-13 THD.




SCHEMATIC DIAGRAM - 302

POWER FACTOR CORRECTION
WITH INTERNAL DISCHARGE RESISTORS
CAT. 16L1545TH4 SN
50KVAR 480V 60HZ 3PH
DELTA CONN
CONTAINS 1.00 GAL. COMBUSTIBLE LIQUID WITH LESS THAN
ONE PART PER MILLION PCB ON MFG DATE MMM YY
CAUTION! BEFORE INSTALLING OR OPERATING READ GEH-2743+2741

101N296C  MADE IN USA

* UP TO +.50
CASE BULGE

MAX. TERMINAL
TIGHTENING TORQUE
15 FT-LBS
NP267192A

	GE ENERGY FORT EDWARD, N.Y., U.S.A.		SIZE A	OUTLINE 16L1545TH4
	DRAWN E.McGinn	DATE 9-6-01	SCALE	
ISSUED	DATE 9-12-01	SHEET 2	CONT ON 3	DISTR. TO