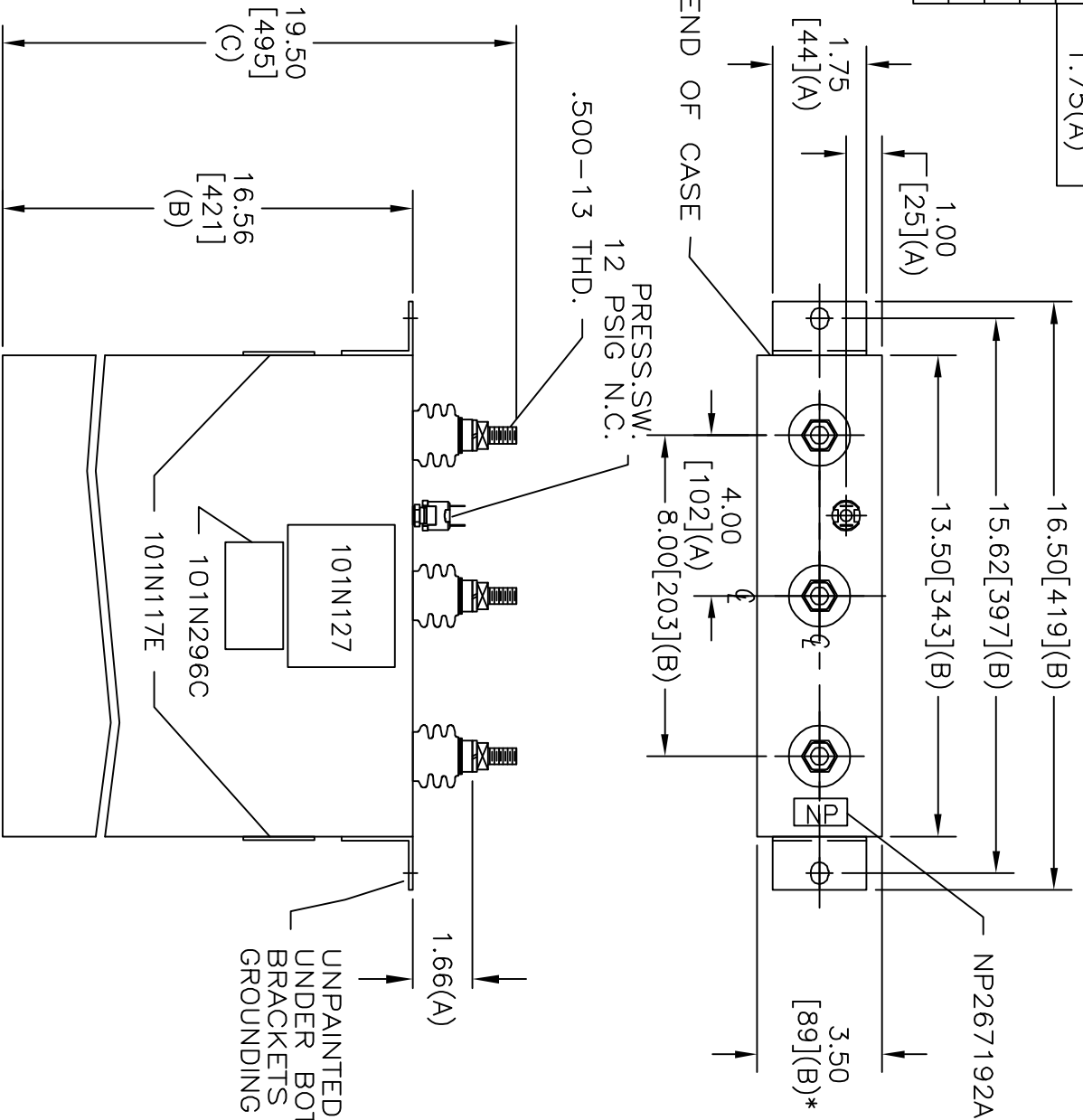
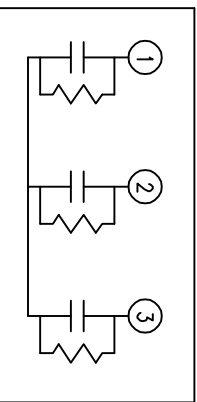


TOL	+/-
A	.06
B	.12
C	.18
D	.50
E	.04

BUSH DIA
1.75(A)



SIZE	DWG NO	SHT	REV
A	16L1560TH4	2	1
REV	DESCRIPTION	DATE	APPROVED
1	CHG NP	5-18-05	EJM



SCHEMATIC DIAGRAM - 337

POWER FACTOR CORRECTION
 WITH INTERNAL DISCHARGE RESISTORS
 CAT. 16L1560TH4 SN
 100KVAR 600V 60HZ 3PH
 WYE CONN
 CONTAINS 1.20 GAL. COMBUSTIBLE LIQUID WITH LESS THAN
 ONE PART PER MILLION PCB ON MFG DATE M/M/YY
 CAUTION! BEFORE INSTALLING OR OPERATING READ GEH-2743+2741
RV
 MADE IN USA
 101N296C

* UP TO +.50
 CASE BULGE

MAX. TERMINAL
 TIGHTENING TORQUE
 15 FT-LBS

NP267192A

INDUSTRIAL SYSTEMS
 FORT EDWARD, N.Y., U.S.A.

DRAWN	B.ROSS	DATE	3-8-02
ISSUED		DATE	4-3-02

SIZE
 SCALE
 A

OUTLINE
 16L1560TH4

SHEET	2	CONT	3
ON			