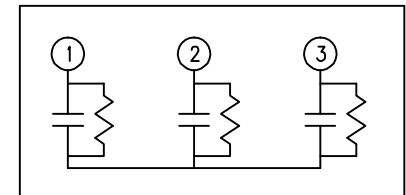
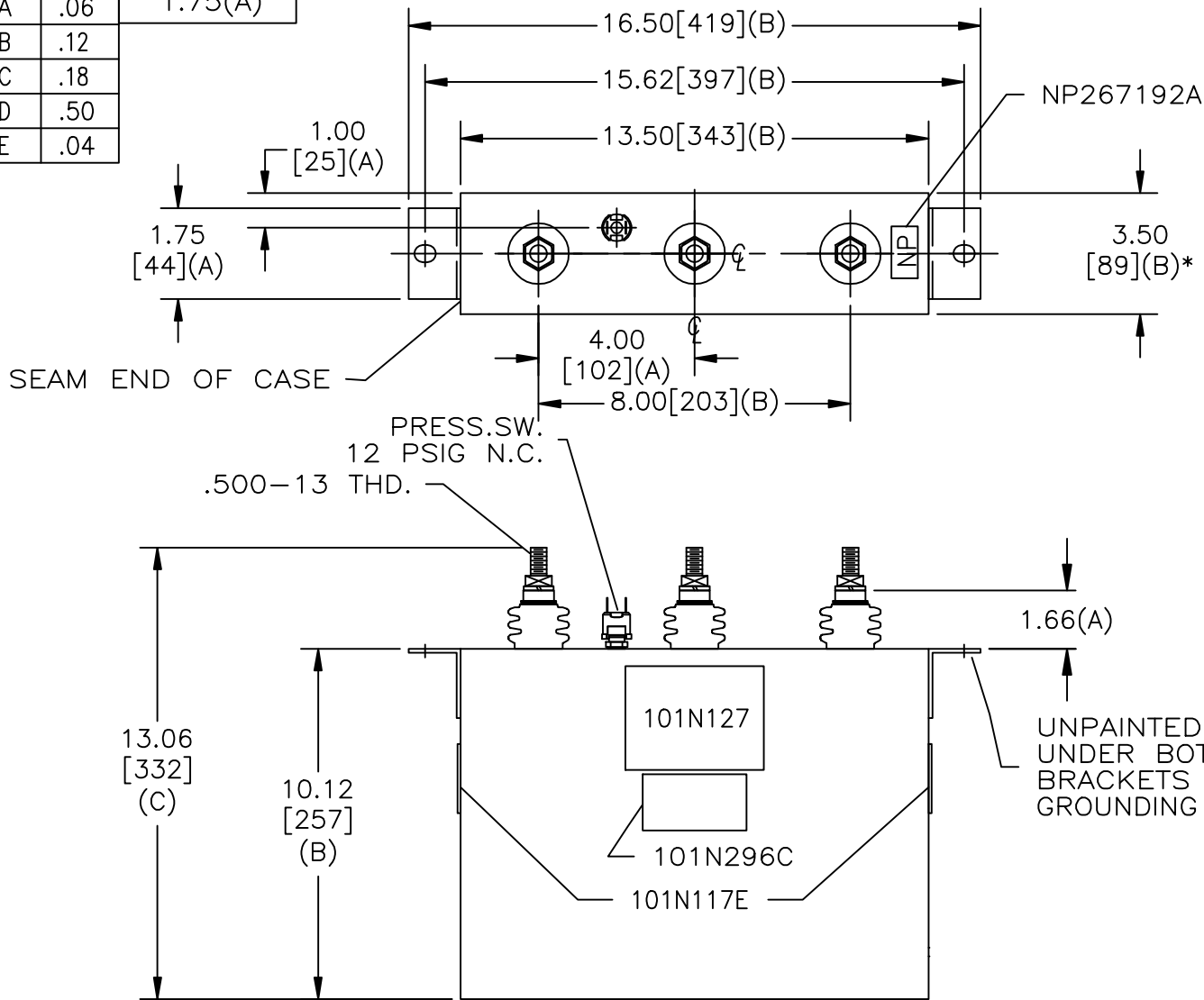



SIZE A	DWG NO 16L1565TH4	SHT 2	REV 1
REV 1	DESCRIPTION CHG NP	DATE 5-18-05	APPROVED EJM

TOL	+/-	BUSH DIA
A	.06	1.75(A)
B	.12	
C	.18	
D	.50	
E	.04	




SCHEMATIC DIAGRAM - 337

POWER FACTOR CORRECTION
WITH INTERNAL DISCHARGE RESISTORS
CAT. 16L1565TH4 SN
50KVAR 600V 60HZ 3PH
WYE CONN
CONTAINS 1.00 GAL. COMBUSTIBLE LIQUID WITH LESS THAN
ONE PART PER MILLION PCB ON MFG DATE MMM YY
CAUTION! BEFORE INSTALLING OR OPERATING READ GEH-2743+2741
101N296C  MADE IN USA

* UP TO +.50
CASE BULGE

MAX. TERMINAL
TIGHTENING TORQUE
15 FT-LBS

NP267192A

 GE ENERGY FORT EDWARD, N.Y., U.S.A.		SIZE A
DRAWN B.Ross	DATE 3-8-02	SCALE
ISSUED	DATE 4-3-02	

OUTLINE
16L1565TH4

SHEET 2 CONT ON 3

DISTR. TO