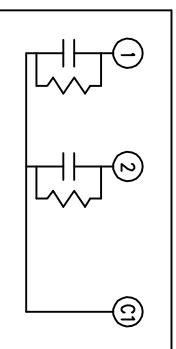
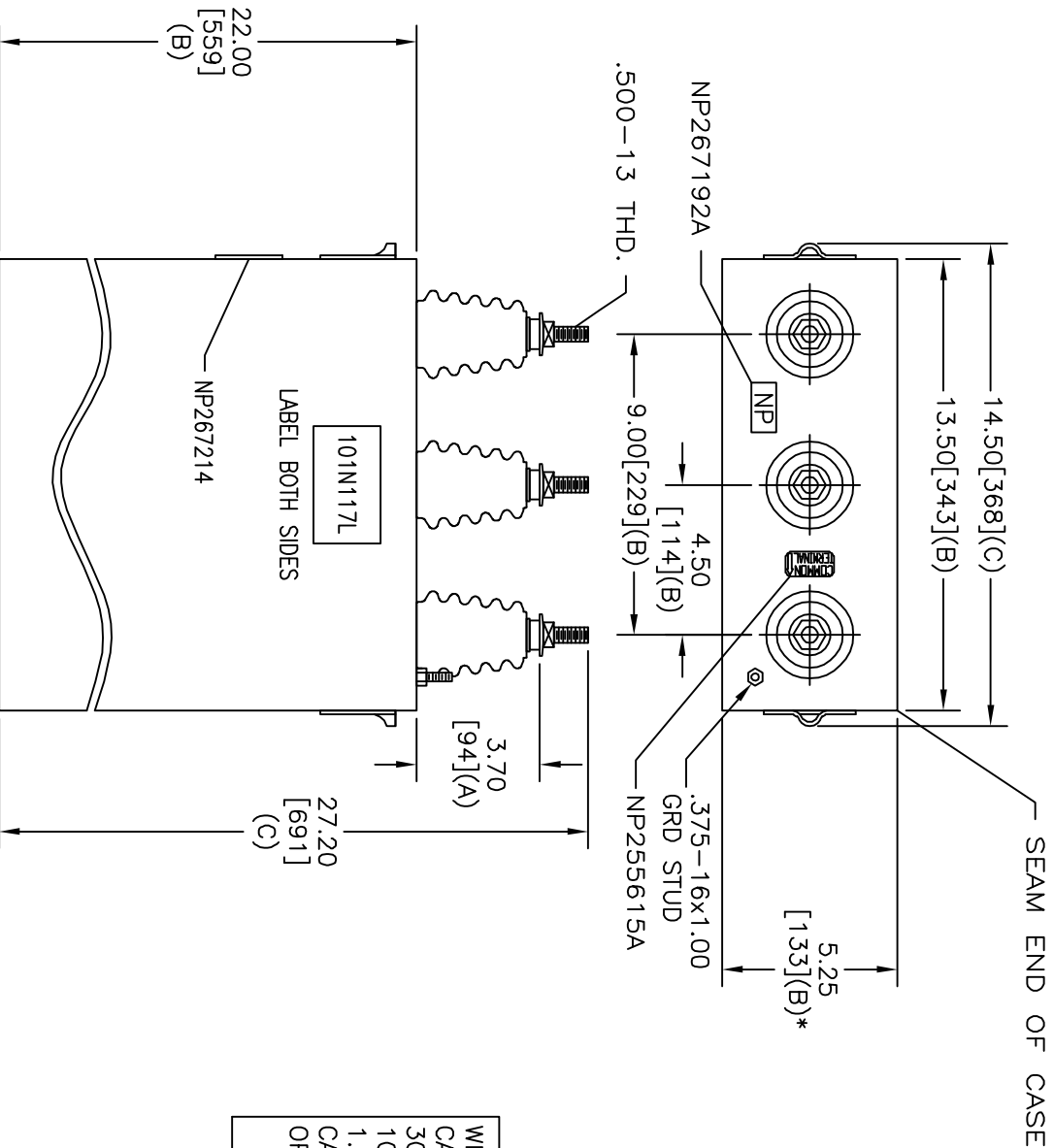


SIZE	DWG. NO.	SHT.	REV.
A	16L0321WH1	2	1
REV.	DESCRIPTION	DATE	APPROVED
1	CHG 101N117L TO L	4/2/2007	BTR

TERM	UF	KVAR
1	66.34	100
2	132.60	200



SCHEMATIC DIAGRAM - 212



WITH INTERNAL DISCH RESISTORS
 CAT. 16L0321WH1 SN
 300KVAR 2000V 60HZ 1PH
 100/200 KVAR/TAP
 1.70 GAL. COMBUSTIBLE LIQUID
 CAUTION! BEFORE INSTALLING OR
 OPERATING READ GEH-2743

NP267214

* UP TO +.50
 CASE BULGE

MAX. TERMINAL
 TIGHTENING TORQUE
 15 FT-LBS
 NP267192A

 GE ENERGY FORT EDWARD, N.Y., U.S.A.		DATE	7/9/2003
		ISSUED	7/16/2003

SIZE	A	<h1>OUTLINE</h1> <h2>16L0321WH1</h2>
SCALE		
SHEET	2	CONT
		3

DISTR. TO