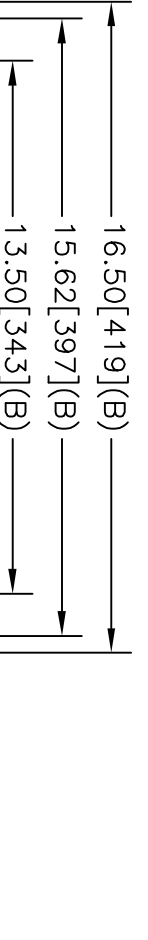


TOL	+/-
A	.06
B	.12
C	.18
D	.50
E	.04



NP267192A

.500-13 THD.

9.00 [229] (B)

4.00 [102] (B)

1.66 [40] (A)

16.00 [406] (B)

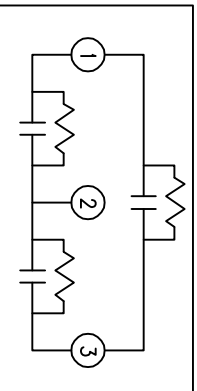
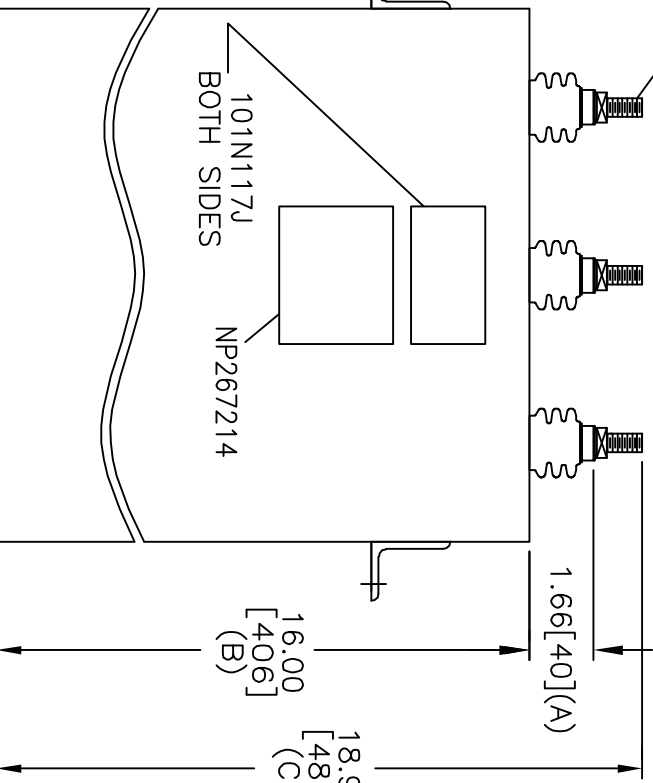
18.94 [481] (C)

(2) .50x.62 [13x16] SLOTS

4.00 [102] (A) [111] (B)\*

4.50 [114] (A)

UNPAINTED AREA ON BRACKET FOR GROUNDING



WITH INTERNAL DISCH RESISTORS

CAT. 16L0322WH3 SN

151X1220FG01PC02

71.8 KVAR 690V 50HZ 3PH

65.0 KVAR 600V 60HZ 3PH

1.53 GAL. COMBUSTIBLE LIQUID

CAUTION! BEFORE INSTALLING OR OPERATING READ GEH-2743

NP267214

\* UP TO +.50 [13] CASE BULGE

MAX. TERMINAL TIGHTENING TORQUE 15 FT-LBS

SIZE	DWG NO	SHT	REV
A	16L0322WH3	2	3
REV	DESCRIPTION	DATE	APPROVED
3	BKT WAS 4.12	5/11/05	BTR

INDUSTRIAL SYSTEMS  
FORT EDWARD, N.Y., U.S.A.

DRAWN B. ROSS

DATE JUL 29, 2003

ISSUED

DATE 9/24/03

OUTLINE

16L0322WH3

SHEET 2 CONT 3