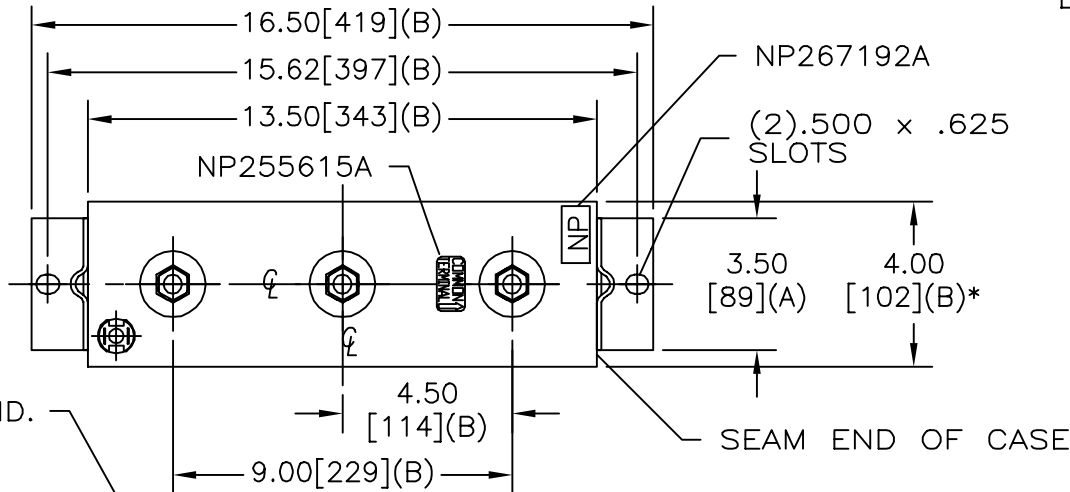
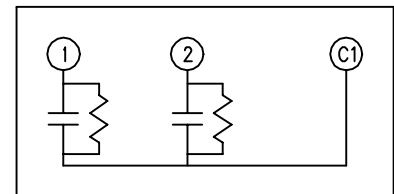


SIZE A	DWG NO 16L0323WH4	SHT 2	REV
REV	DESCRIPTION	DATE	APPROVED

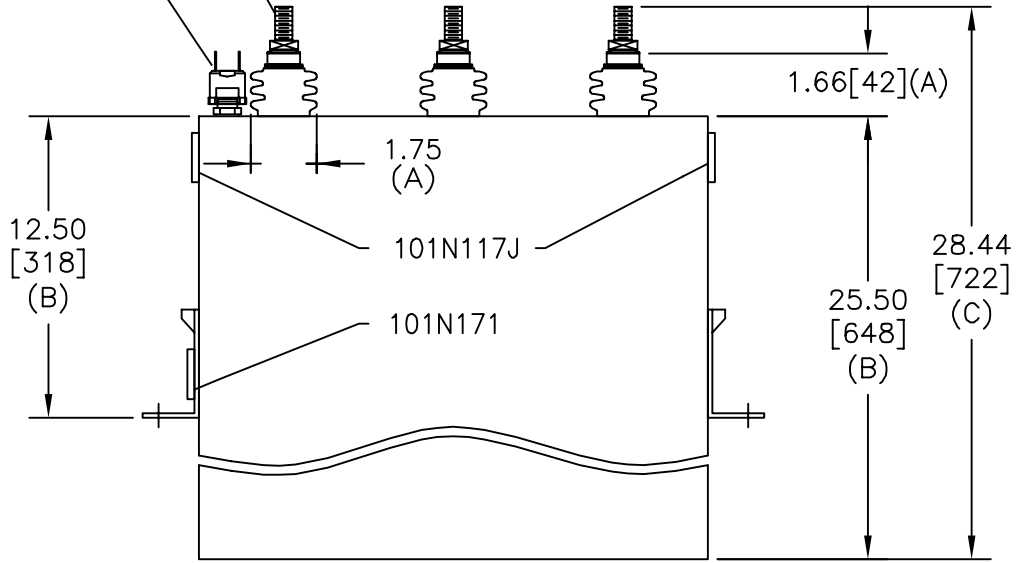
TOL	+/-
A	.06
B	.12
C	.18
D	.50
E	.04



TERM	uF	kVAR
1	276.3	150
2	92.1	50



PRESS SW
12 PSIG N.C.



150-50 KVAR/TAP
 1200V 1 PH KVBIL
 200 KVAR 60 Hz
 CAT 16L0323WH4 SN
 1.80 GAL.
 MFG DATE
 101N171 READ GEH- 2743

* UP TO +.50
CASE BULGE

MAX. TERMINAL
TIGHTENING TORQUE
15 FT-LBS

NP267192A

INDUSTRIAL SYSTEMS FORT EDWARD, N.Y., U.S.A.	SIZE A	<h1>OUTLINE</h1> <h2>16L0323WH4</h2>	
	SCALE		
DRAWN B. ROSS ISSUED	DATE SEP 12, 2003 DATE 9/17/03	SHEET 2 CONT ON 3	DISTR. TO