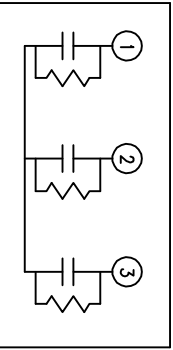
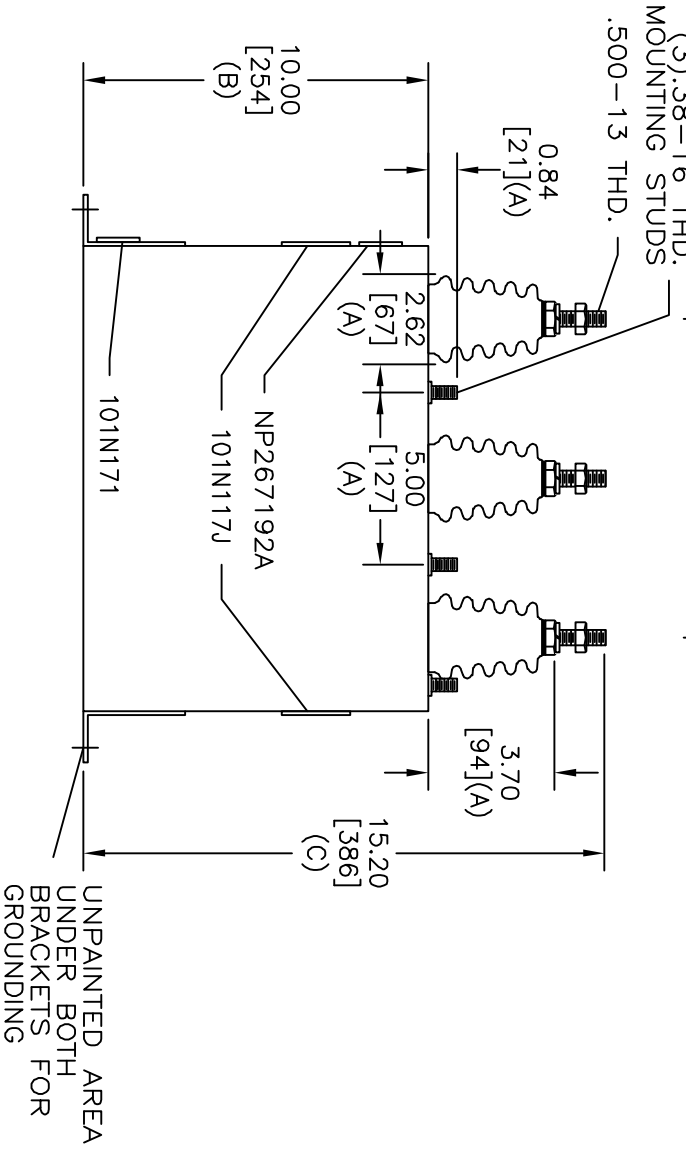
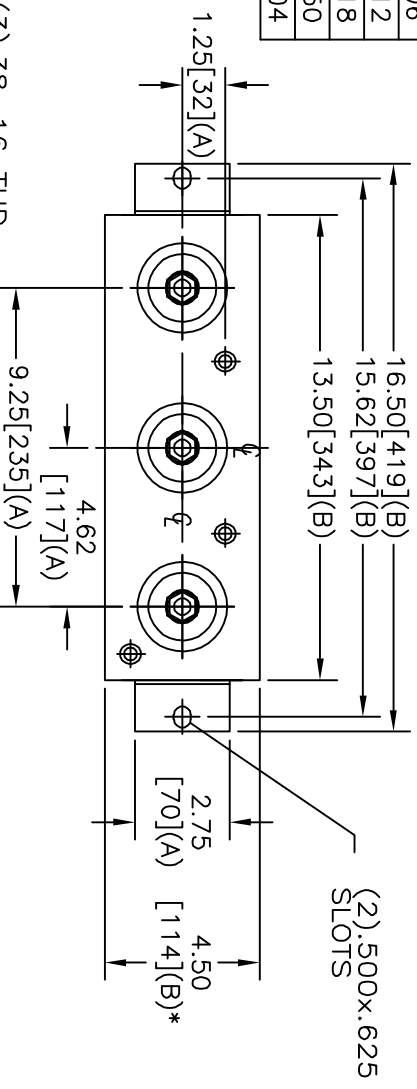


TOL	+/-
A	.06
B	.12
C	.18
D	.50
E	.04



5300V	3 PH	KVBIL
54	KVAR	60 HZ
CAT	16L0325WH3	SN
	0.67 GAL.	
101N171	MFG DATE	
	READ	GEH - 2743

SIZE	DWG NO	SHT	REV
1	16L0325WH3	2	1
REV	DESCRIPTION	DATE	APPROVED
1	HEIGHT WAS 9.75	1/28/03	BTR

* UP TO +.50 [13]
CASE BULGE
MAX. TERMINAL
TIGHTENING TORQUE
15 FT-LBS
NP267192A

INDUSTRIAL SYSTEMS
FORT EDWARD, N.Y., U.S.A.

DRAWN B. ROSS
ISSUED

DATE DEC 19, 2003
DATE 1/14/04

SIZE A
SCALE

OUTLINE
16L0325WH3

SHEET 2 CONT 3

DISTR. TO