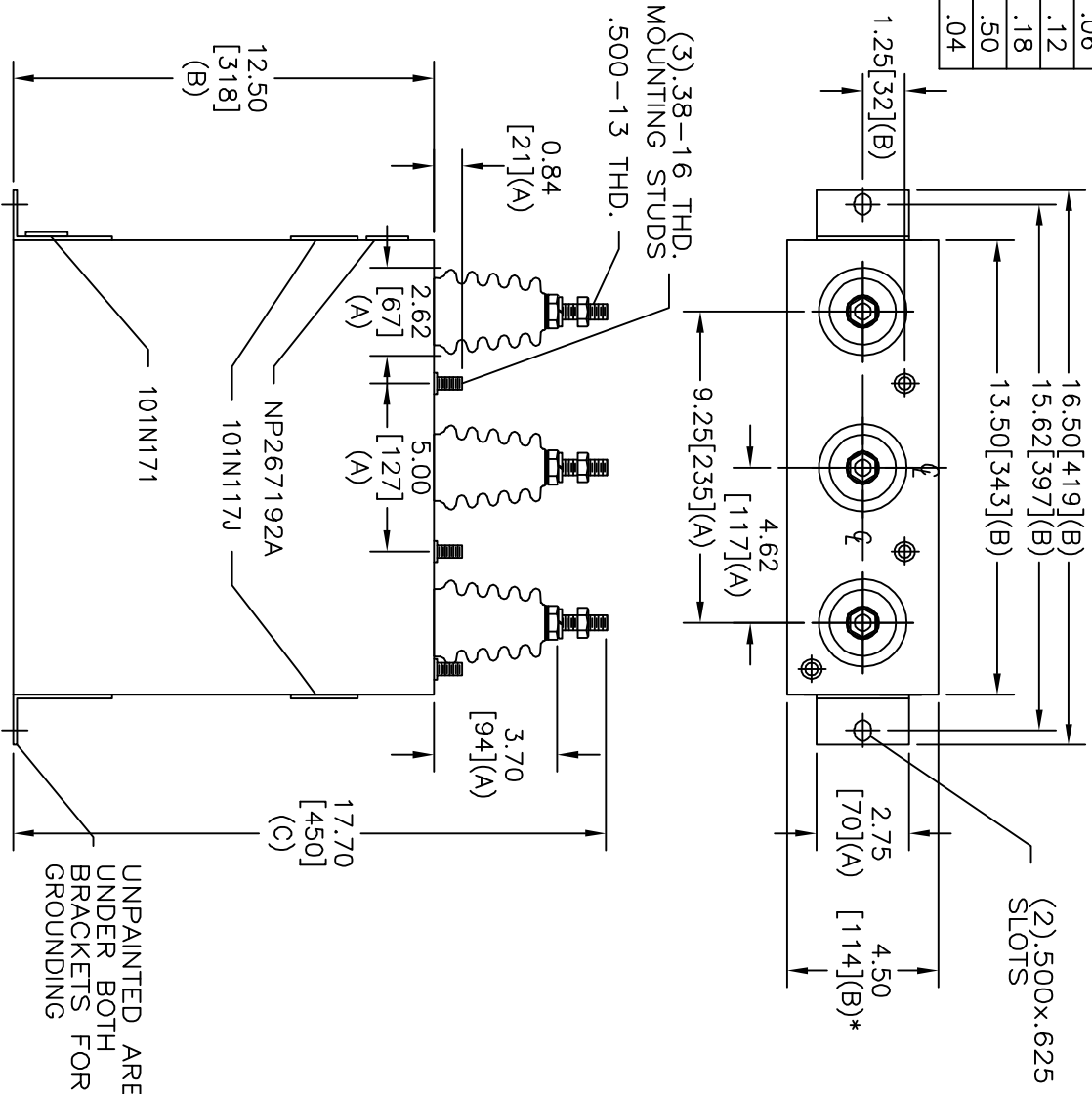
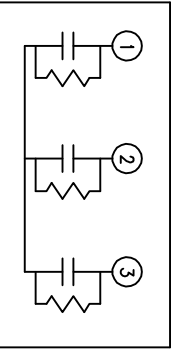


TOL	+/-
A	.06
B	.12
C	.18
D	.50
E	.04



REV	DESCRIPTION	DATE	APPROVED
1	16L0326WH3		



5300V	3 PH	KVBIL
76	KVAR	60 HZ
CAT	16L0326WH3	SN
	0.90 GAL.	
101N171	MFG DATE	
	READ GEH-2743	

\* UP TO +.50 [13]  
CASE BULGE

MAX. TERMINAL  
TIGHTENING TORQUE  
15 FT-LBS

NP267192A

INDUSTRIAL SYSTEMS  
FORT EDWARD, N.Y., U.S.A.

ISSUED	DATE	SCALE
B. ROSS	DEC 19, 2003	A

OUTLINE  
16L0326WH3

SHEET	CONT
2	3

DISTR. TO