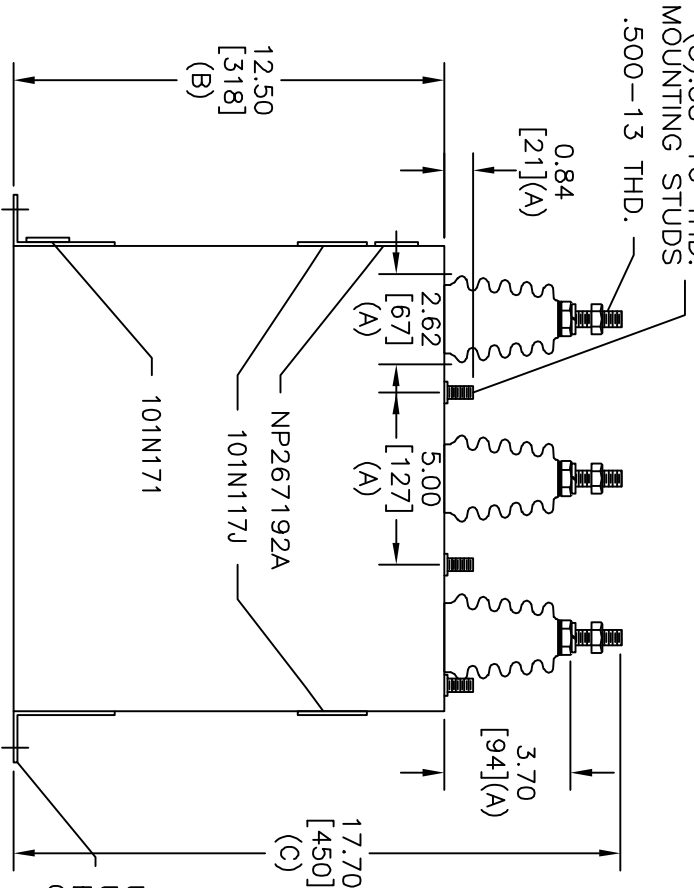
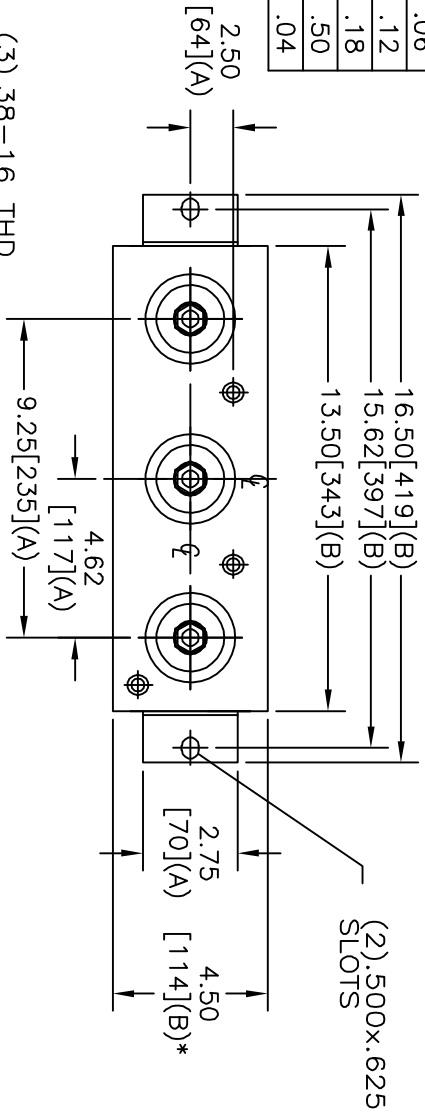


TOL	+/-
A	.06
B	.12
C	.18
D	.50
E	.04

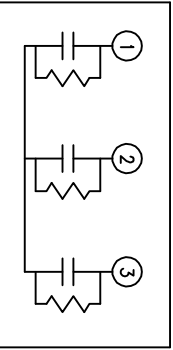


* UP TO +.50 [13] CASE BULGE

MAX. TERMINAL TIGHTENING TORQUE 15 FT-LBS

NP267192A

SIZE	DWG. NO.	SHT.	REV.
REV	DESCRIPTION	DATE	APPROVED



5300V	3 PH	KVBIL
106	KVAR	60 HZ
CAT	16L0327WH3	SN
	0.90 GAL.	
101N171	MFG DATE	READ DATE
	GEH-2743	

UNPAINTED AREA UNDER BOTH BRACKETS FOR GROUNDING

INDUSTRIAL SYSTEMS
FORT EDWARD, N.Y., U.S.A.

INDUSTRY DRAWN BY B. ROSS
DATE DEC 19, 2003
ISSUED

SIZE A

OUTLINE
16L0327WH3

SHEET 2 CONT 3

DISTR. TO