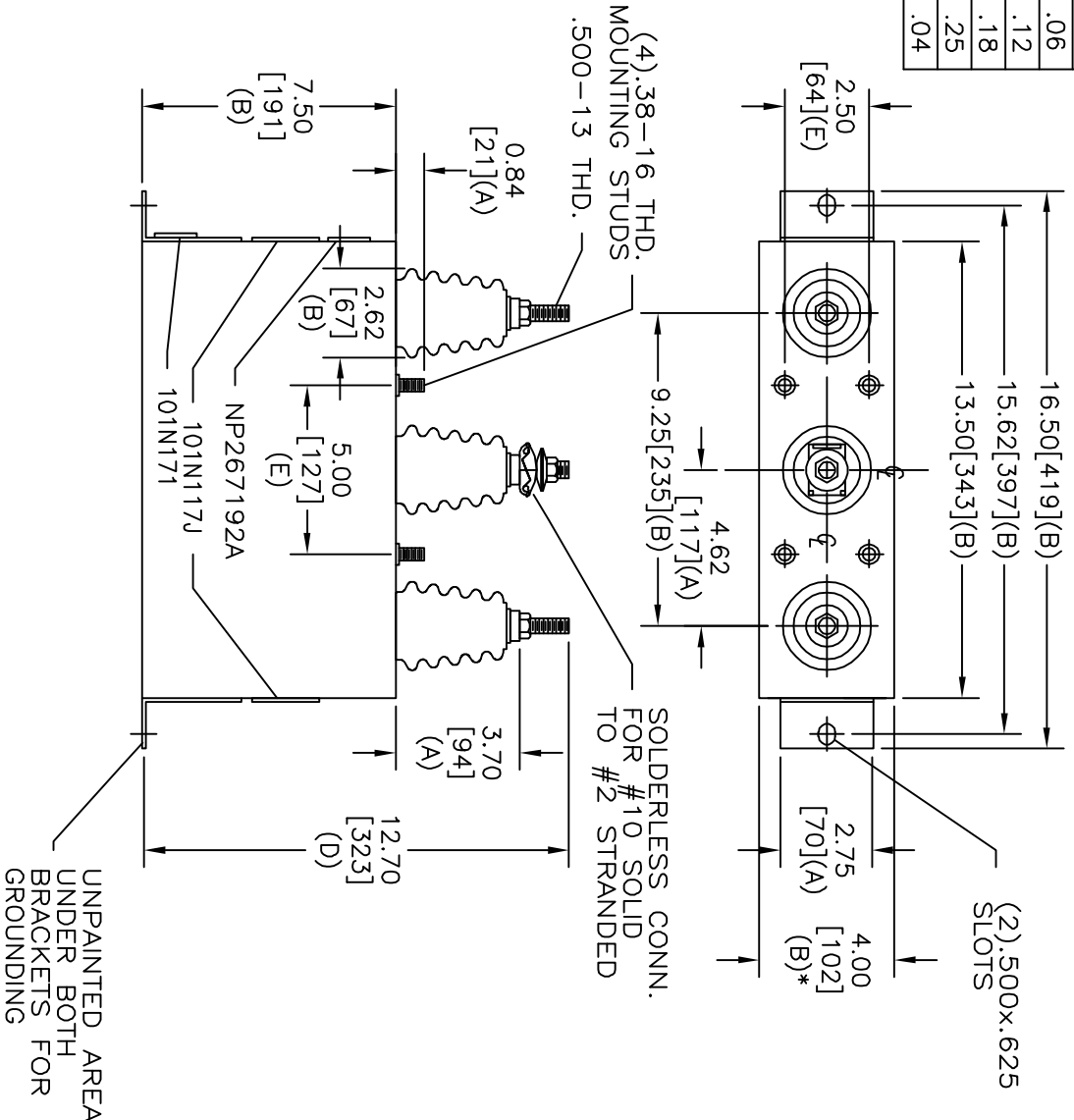
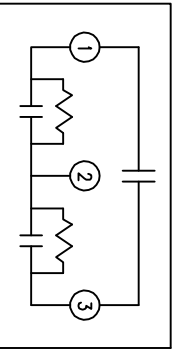


TOL	+/-
A	.06
B	.12
C	.18
D	.25
E	.04



SIZE	DWG. NO.	SHT.	REV.
A	16L0328WH3	2	
REV	DESCRIPTION	DATE	APPROVED



4800 V	3 PH	60 KVBL
20 KVAR	60 Hz	
CAT 16L0328WH3	SN	
.86 GAL.	MFG DATE	
101N171	READ	GEH-2743

* UP TO +.50 [13]
CASE BULGE

MAX. TERMINAL
TIGHTENING TORQUE
15 FT-LBS

NP267192A

INDUSTRIAL SYSTEMS
FORT EDWARD, N.Y., U.S.A.

DRAWN E. McGinn
DATE JAN 13, 2004
ISSUED DATE 1/21/04

SIZE A
SCALE

OUTLINE
16L0328WH3

SHEET 2 CONT 3

DISTR. TO