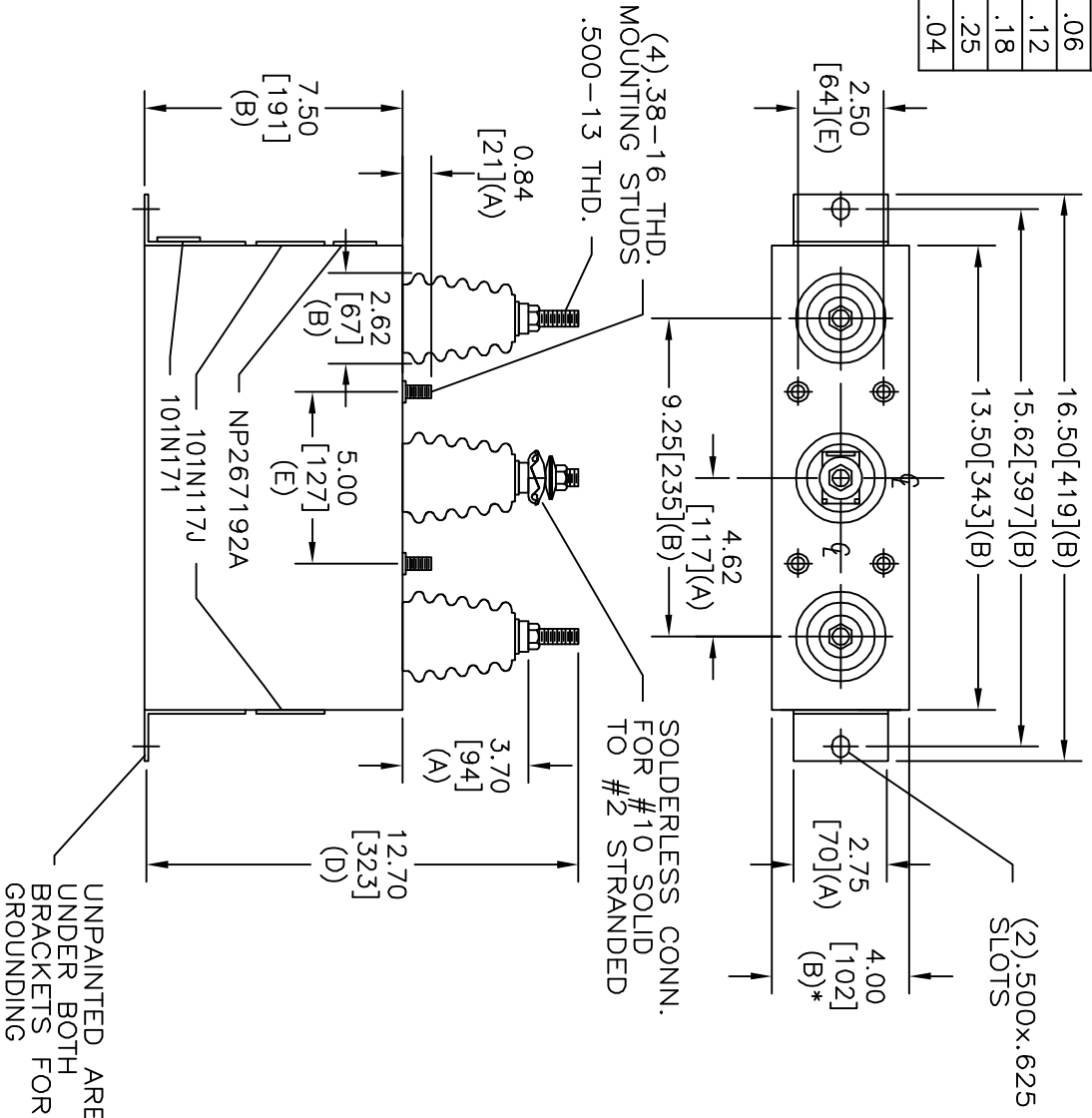
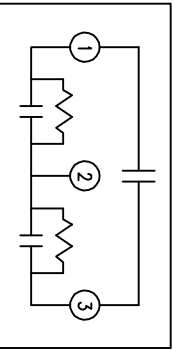


TOL	+/-
A	.06
B	.12
C	.18
D	.25
E	.04



SIZE	DWG. NO.	SHT	REV
A	16L0329WH3	2	
REV	DESCRIPTION	DATE	APPROVED



SCHEMATIC DIAGRAM - 304

4800 V	3 PH	60 KVBL
30	KVAR	60 Hz
CAT	16L0329WH3	SN
	.86 GAL.	
101N171	MFG DATE	READ GEH- 2743

\* UP TO +.50 [13]  
CASE BULGE

MAX. TERMINAL  
TIGHTENING TORQUE  
15 FT-LBS

NP267192A

INDUSTRIAL SYSTEMS  
FORT EDWARD, N.Y., U.S.A.

ISSUED	DATE	DATE	DATE
	1/21/04	JAN 13, 2004	

SIZE  
A

OUTLINE  
16L0329WH3

SHEET	CONT
2	3

DISTR. TO