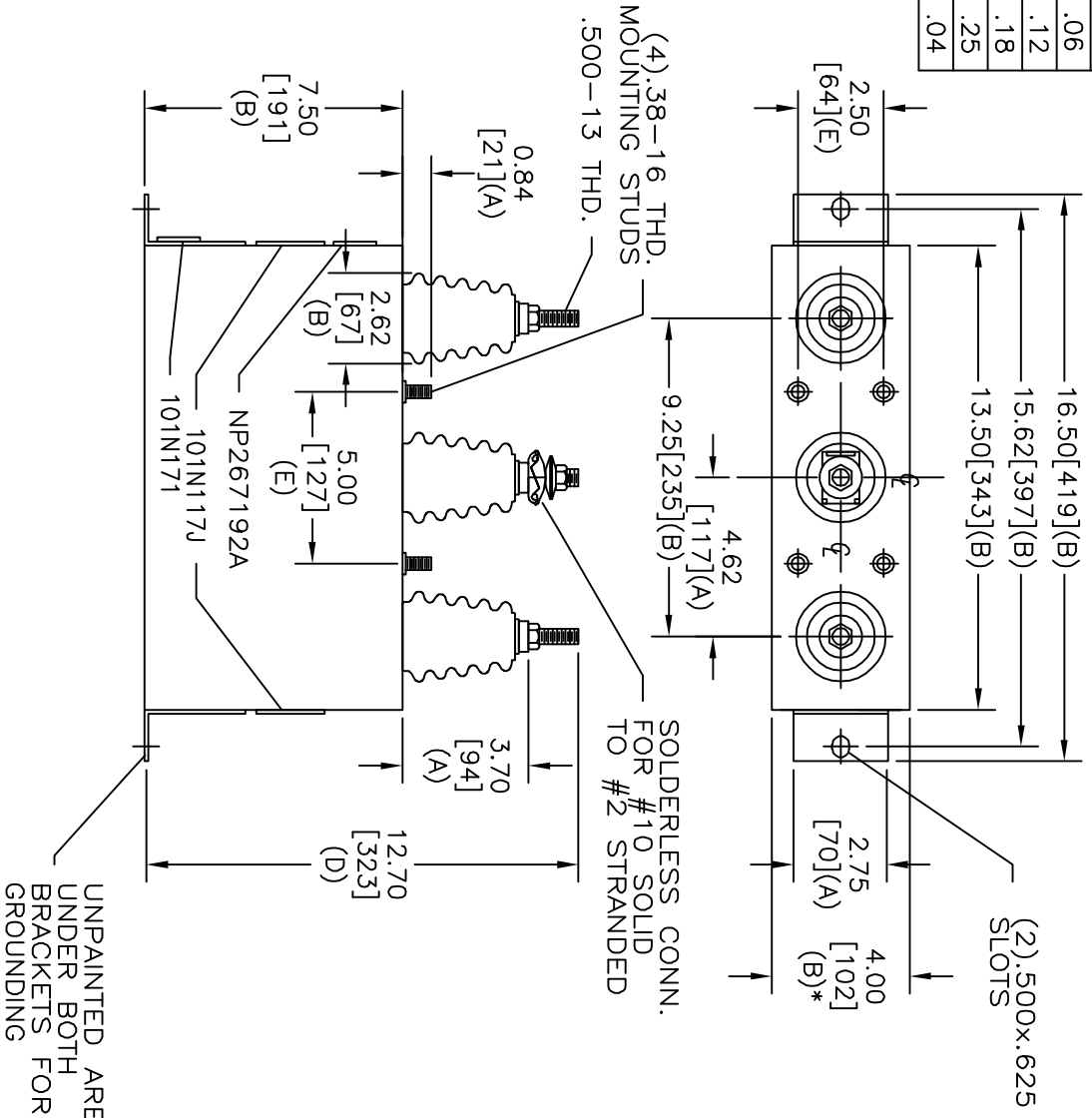
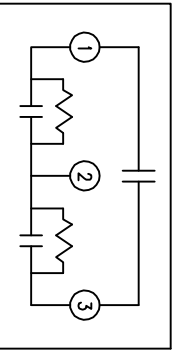


TOL	+/-
A	.06
B	.12
C	.18
D	.25
E	.04



SIZE	DWG. NO.	SHT.	REV.
A	16L0330WH3	2	
REV	DESCRIPTION	DATE	APPROVED



SCHEMATIC DIAGRAM - 304

4800 V	3 PH	60 KVBL
40 KVAR	60 HZ	
CAT 16L0330WH3	SN	
.86 GAL.	MFG DATE	
101N171	READ	GEH-2743

* UP TO +.50 [13]
CASE BULGE
MAX. TERMINAL
TIGHTENING TORQUE
15 FT-LBS
NP267192A

INDUSTRIAL SYSTEMS FORT EDWARD, N.Y., U.S.A.	
DRAWN B. ROSS	DATE JAN 13, 2004
ISSUED	DATE 1/21/04

SIZE A
SCALE

OUTLINE	
16L0330WH3	
SHEET 2	CONT 3

DISTR. TO