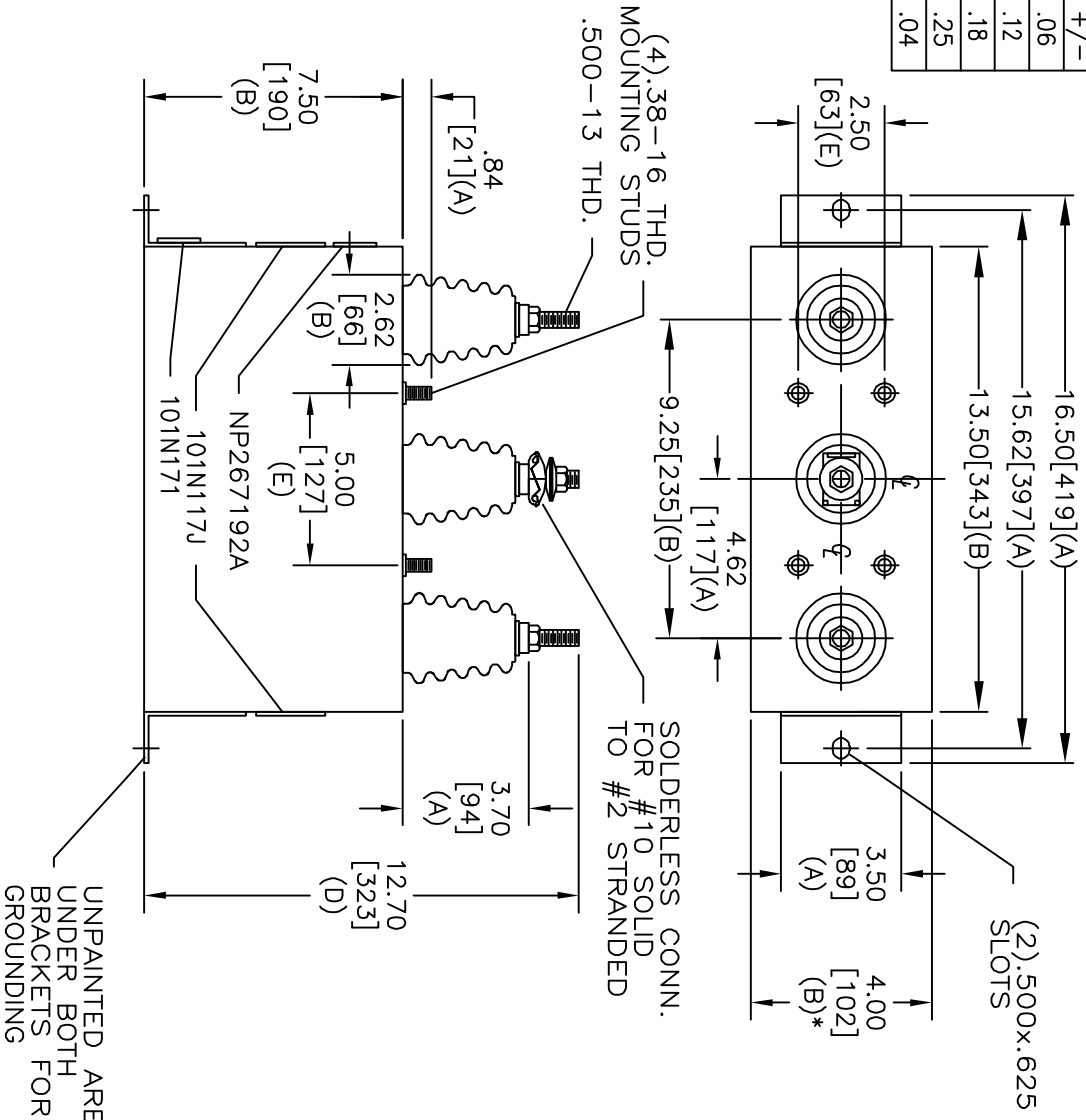


TOL	+/-
A	.06
B	.12
C	.18
D	.25
E	.04

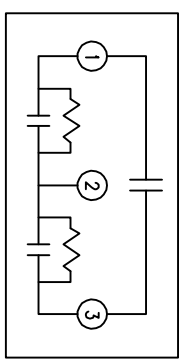


\* UP TO +.50[13]  
CASE BULGE

MAX. TERMINAL  
TIGHTENING TORQUE  
15 FT-LBS

NP267192A

SIZE	DWG NO	SHT	REV
A	16L0335WH3	2	
REV	DESCRIPTION	DATE	APPROVED



2770V	3 PH	KVBILL
25	KVAR	60 HZ
CAT	16L0335WH3	SN
.84	GAL.	
MFG DATE	READ	GEH-2743
101N171		

INDUSTRIAL SYSTEMS  
FORT EDWARD, N.Y., U.S.A.

DRAWN E. McGinn

ISSUED

DATE 5-10-04

DATE 5-12-04

SIZE A

SCALE

OUTLINE  
16L0335WH3

SHEET 2 CONT 3

DISTR. TO