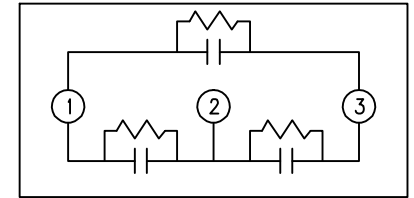
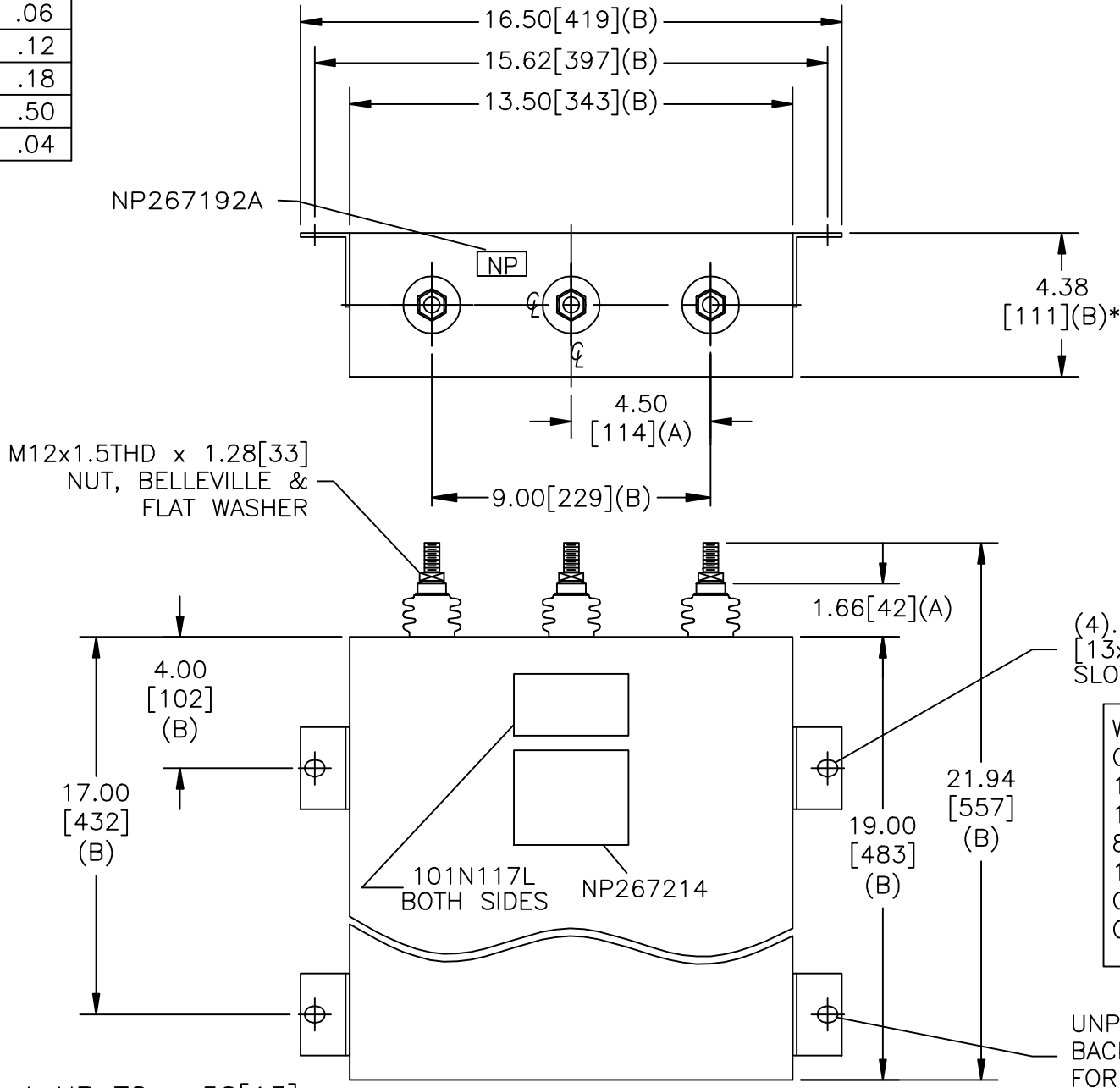


SIZE A	DWG NO 16L0336WH3	SHT 2	REV 1
REV 2	DESCRIPTION CHG TERM DESCR	DATE 6/11/04	APPROVED BTR

TOL	+/-
A	.06
B	.12
C	.18
D	.50
E	.04



SCHEMATIC DIAGRAM - 302

WITH INTERNAL DISCH RESISTORS
 CAT. 16L0336WH3 SN
 151X1227FG01PC01
 100.0 KVAR 690V 60HZ 3PH
 83.3 KVAR 690V 50HZ 3PH
 1.81 GAL. COMBUSTIBLE LIQUID
 CAUTION! BEFORE INSTALLING OR
 OPERATING READ GEH-2743
 NP267214

MAX. TERMINAL
 TIGHTENING TORQUE
 15 FT-LBS

NP267192A

GE ENERGY FORT EDWARD, N.Y., U.S.A.		SIZE A	<h1>OUTLINE</h1> <h2>16L0336WH3</h2>		DISTR. TO
DRAWN B. ROSS	DATE JUN 11, 2004	SCALE			
ISSUED	DATE	SCALE	SHEET 2	CONT ON 3	DISTR. TO