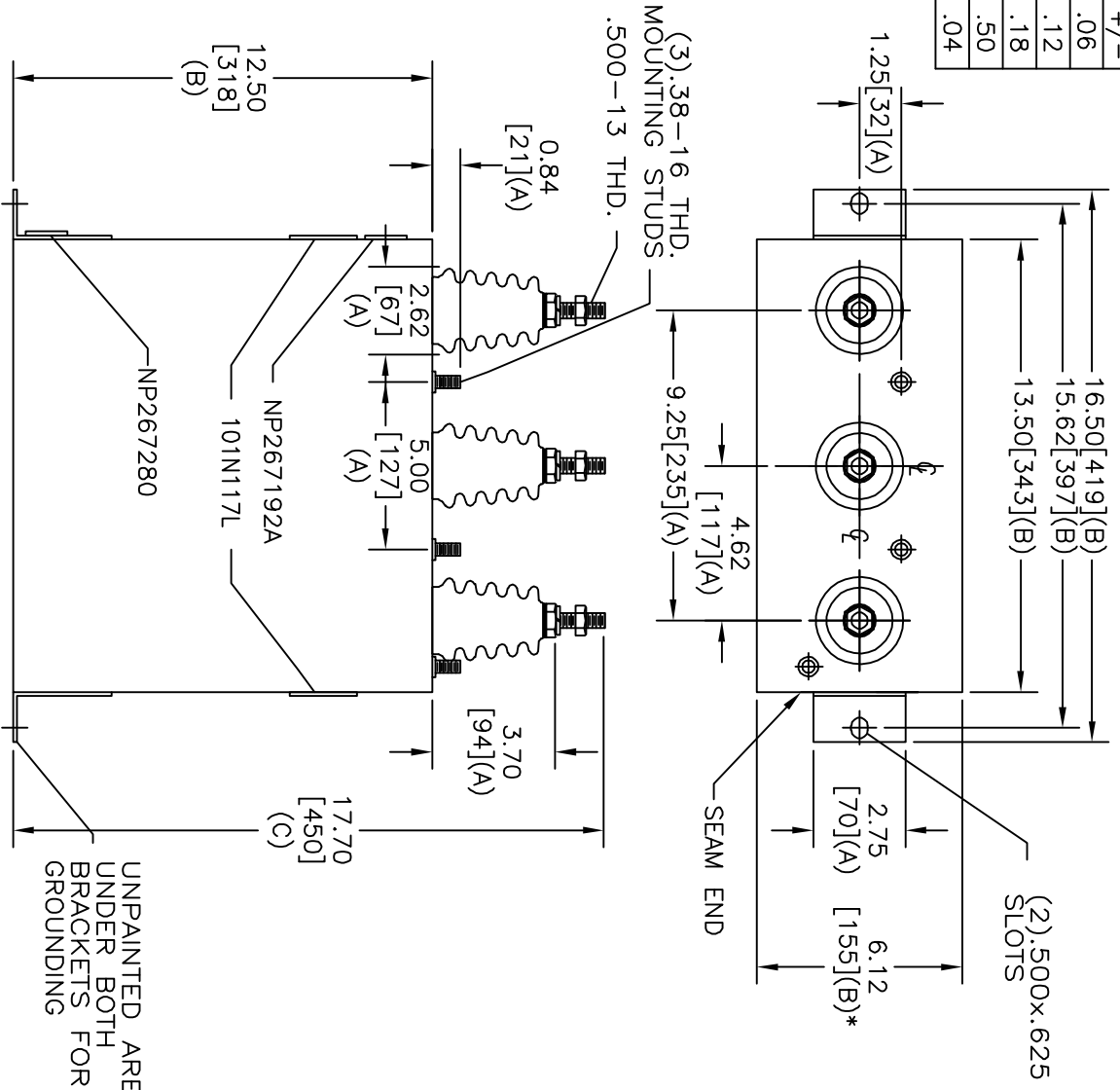
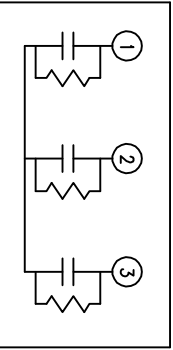


TOL	+/-
A	.06
B	.12
C	.18
D	.50
E	.04



SIZE	DWG. NO.	SHT	REV
A	16L0338WH3	2	2
REV	DESCRIPTION	DATE	APPROVED
2	101N117L WAS J	5/4/2007	BTR



SCHEMATIC DIAGRAM - 337

DIELEKTROL	FLUID
WITH INTERNAL DISCHARGE RESISTORS	
3X10UF 8300V 50/60HZ	
CAT 16L0338WH3	SN
1.23 GAL.	
MFG DATE	
NP267280	READ GEH- 2743

* UP TO +.50 [13] CASE BULGE

MAX. TERMINAL TIGHTENING TORQUE 15 FT-LBS

NP267192A

GE ENERGY
FORT EDWARD, N.Y., U.S.A.

DRAWN	B. ROSS	DATE	8/4/2004
ISSUED		DATE	8/18/2004

SIZE A

OUTLINE
16L0338WH3

SHEET 2 CONT 3

DISTR. TO