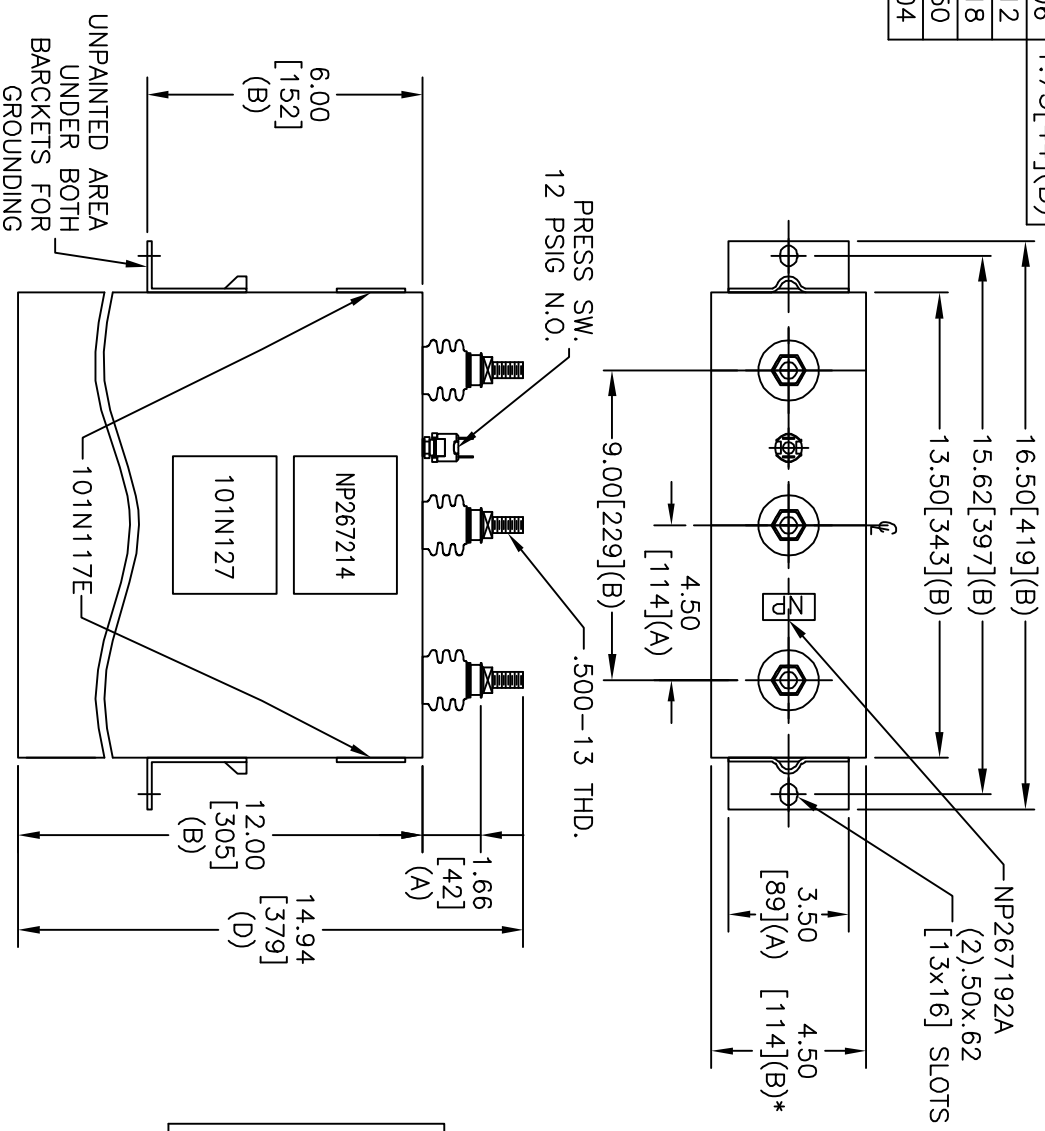
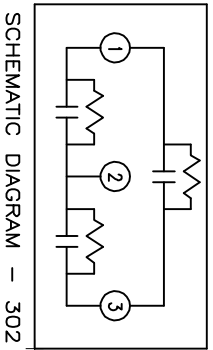


TOL	+/-	BUSH. DIA.
A	.06	1.75[.44](B)
B	.12	
C	.18	
D	.50	
E	.04	



SIZE	DWG NO	SHT	REV
A	16L0526TH4	2	
REV	DESCRIPTION	DATE	APPROVED
B	MOVE NP'S	03/18/04	JBC



SCHEMATIC DIAGRAM - 302

WITH INTERNAL DISCH RESISTORS
 CAT. 16L0526TH4 SN
 30KVAR 240V 60HZ 3PH
 1.40 GAL. COMBUSTIBLE LIQUID
 CAUTION! BEFORE INSTALLING OR
 OPERATING READ GEH-2743
 MADE IN MEXICO
 NP267214

* UP TO +.50[1.3]
 CASE BULGE

MAX. TERMINAL
 TIGHTENING TORQUE
 15 FT-LBS

NP267192A

INDUSTRIAL SYSTEMS FORT EDWARD, N.Y., U.S.A.		SIZE	A	
DRAWN	E. McGinn	DATE	SEP. 4, 1990	
ISSUED		DATE	09/06/90	
		SCALE		
<h1>OUTLINE</h1> <h2>16L0526TH4</h2>		SHEET	2	CONT
				3

DISTR. TO